

SAULT STE. MARIE

2023/2024



**SAULT
STE. MARIE**
ONTARIO CANADA




Thrive Tours
Indigenous Eco-Cultural Tourism
Baawaating / Sault Ste. Marie / Northern Ontario

ITO
Indigenous
TOURISM
ONTARIO

ONTARIO
TOURISM
Resiliency
AWARDS
2022 & 2021
WINNER

Indigenous Interpretive Guided Experiences
Canoeing, Kayaking, Hiking, Snowshoeing and More.

f 705-862-1558 www.thrivetours.ca i



Welcome Bienvenue Biindigen

Traditionally known as Bawating ("the place of the rapids"), Sault Ste. Marie is a place of cultural significance. Located in the Heart of Turtle Island, Indigenous people have occupied this region since time immemorial.

We acknowledge with respect, that we are in Robinson-Huron Treaty territory, that the land on which we are gathered is the traditional territory of the Anishinaabe and known as Bawating. Bawating is the home of Garden River First Nation, Batchewana First Nation, and the Historic Sault Ste. Marie Métis Council.

the TOTEM POLE

Located in the Frontier Village

LARGEST SOUVENIR AND GIFT SHOP IN TOWN!

A huge variety of authentic Canadian made moccasins and mukluks sold here!

**-35 MITTENS • MOHAIR APPAREL • INUKSHUKS
DREAMCATCHERS • SHEARLING RUGS • JEWELLERY
HOME DECOR • HOME TO THE GREAT LAKES HOODIE
SAULT STE. MARIE & LAKE SUPERIOR SOUVENIRS
AND SO MUCH MORE!**

Open year round

Highway 17 North • 1340 Great Northern Rd.

705-945-8447

www.thetotempole.ca

Your host: Danielle Simms-Dowding



6 OUTDOOR ADVENTURES

Sault Ste. Marie is the gateway to an outdoor enthusiast's paradise of forests, vistas and wild rivers.

30 AGAWA CANYON TOUR TRAIN

Climb aboard the one-day Agawa Canyon Tour Train for a Northern Ontario travel experience that will leave you breathless.

36 ARTS & CULTURE

Sault Ste. Marie is a vibrant hub for art, culture and history.

52 INDIGENOUS CULTURAL EXPERIENCES

Explore and connect with our cultural roots through Indigenous Tourism experiences and events.

57 FESTIVALS AND EVENTS

Festivals that showcase culinary passions, pow wows that immerse you in a cultural experience, and sporting events that fulfill that adrenaline dream.

62 ACTIVITY DIRECTORY

A one stop resource to plan your perfect vacation.

75 ACCOMMODATIONS

Hotels, motels and lodges. Something for everyone to compliment your stay in Sault Ste. Marie.

81 VISITORS MAP

Discover all the places you can go.

This publication is produced by Tourism Sault Ste. Marie in Canada. Cover photo courtesy of Richard Jones. Designed by Jessica Glemnitz / Anthem Design, printed by Millenium Printing. Every effort has been made to ensure accuracy. For more information on Sault Ste. Marie, visit our website at www.saulttourism.com or call 1-800-461-6020.



SAULT STE. MARIE



Lots of fun, food & shopping!



Station Mall is home to a food court, and a variety of stores for fashion, technology, gifts, services and more. Located downtown on the waterfront, Station Mall is just steps away from local hotels and attractions. At Station Mall, we are all about bringing you choices.

**Regular Hours: Monday - Friday 10:00am - 8:00pm
Saturday 10:00am - 5:30pm Sunday 12:00pm - 5:00pm**

www.thestationmall.com *Your Centre of Choice!*

293 BAY STREET, SAULT STE. MARIE, ON P6A 1X3 TEL: 705-946-7239

www.saultstemarie.com

UNWINDING



ADVENTURE



AWAITS



U.S. VISITORS TO CANADA

Passports have been required for return travels to the USA, by all modes of transportation, since 2009 for all citizens. NEXUS cards, and enhanced drivers licenses may also be options for entry. Travellers aged 15 and under require a birth certificate for land or sea travel and a passport for air travel. If you are traveling with a child other than your own or without the child's parents/guardians or your spouse, have the child's birth certificate along with a letter of permission, including name and contact information for that child's parents/guardians or your spouse. Direct all inquiries or questions to the nearest immigration office in your community.

Any questions about entry to Canada may be addressed to:
Canadian Customs Information:
705-941-3063 or www.cbsa-asfc.gc.ca
United States Customs Information:
906-632-8822

CURRENCY EXCHANGE

To obtain the best rate of exchange, we recommend using your credit card or exchanging currency prior to shopping. U.S. funds can be exchanged at most banks.

VEHICLES AND DRIVING

Seatbelts are mandatory for anyone weighing over 80lbs; and car seats are required for children under that weight. Radar detectors are illegal in Ontario. Studded tires are permitted between October 1 and April 30 in the District of Algoma. Right turns are permitted on a red light after a complete stop unless posted otherwise. Speed limits and distances are posted in kilometres. Liquid fuels are sold by the litre.

CANNABIS

Although cannabis (marijuana) is legal and regulated in Canada, it remains illegal to transport cannabis in any form – including any oils containing THC or cannabidiol (CBD), across Canada's national borders whether you are entering or leaving Canada. For further information visit: www.cbsa-asfc.gc.ca

EMERGENCY SERVICES

In the case of an emergency, please dial 911 for immediate assistance. For non-urgent inquiries, please see contacts below.

SAULT AREA HOSPITAL

705-759-3434 | www.sah.on.ca
750 Great Northern Road, Sault Ste. Marie
Note: Non-Ontario residents may have to pay at registration and/or at time of discharge. They will provide receipt and documents for insurance.

SAULT STE. MARIE FIRE SERVICES

705-949-3335 | www.saultstemarie.ca
72 Tancred Street, Sault Ste. Marie

SAULT STE. MARIE POLICE SERVICE

705-949-6300 | www.ssmps.ca
580 Second Line East, Sault Ste. Marie

ONTARIO PROVINCIAL POLICE

705-945-6833 | www.opp.ca
742 Great Northern Road, Sault Ste. Marie

COVID-19

Please follow local health guidelines for travel as per the Ontario government's COVID-19 response framework. For the most up-to-date information regarding COVID-19, in the area visit the Algoma Public Health website.
www.algomapublichealth.com

All travelers please ensure to have:

- ☐ Your health and/or insurance card
- ☐ A list of your medications and what they are used for
- ☐ Your complete medical history
- ☐ The contact name and phone number of primary physician
- ☐ The contact name and phone number of next of kin



MOUNTAIN BIKING IN THE SOO

By Sault Tourism and Canadian Cycling Magazine

Come for the new mountain bike trails, stay for the sites.



Sault Ste. Marie has some of the best mountain bike trails in Ontario, and they are just ten minutes from downtown. You can be riding hard one minute then relaxing at a microbrewery almost the next. Check out our suggestion of four top trails on the next page.

MICROBREWERIES AND POST-RIDE HYDRATION

The Soo has some great options for post-ride hydration. *Outspoken* and *Northern Superior's Tap Room* are great microbreweries if you're looking



to try some local suds. Both often have local bands playing and the vibe is great!

Check out the Canal District and Machine Shop area. This recently restored area has become one of the hottest parts in town, and has great food and drinks, with a number of restaurants and pubs in one centralized area.

Sault Ste. Marie is the perfect place to visit for a mountain biking weekend!

TOP TRAILS

1 FARMER LAKE TRAIL Start your mountain biking adventure on the newly constructed Farmer Lake trail. It's a 7 km out and back trail through the stunning Canadian Shield that will eventually take you to the beautiful Farmer Lake. Before you get there you are going to have to navigate up the rocky **Climb to Canyon** section, a new modern flow XC trail that is a fun test of your technical skills. After this rocky climb, you'll next be met by the many berms and hairpin turns of **Farmer Lake trail** which leads you to the beautiful lake the trail is named after. Enjoy the view as you catch your breath then head back along the trails!

2 CRYSTAL SYSTEM The Crystal System is what everyone is talking about up here; we recently added 12 km of new machine built flow trails bringing the total to over 20 km. You can ride alongside (and over) beautiful creeks, take in some spectacular lookouts, or simply enjoy the rollercoaster experience of new flow trails such as **Berm Baby Berm**.

3 RED PINE SYSTEMS This 15 km long system has a wide array of trails for all abilities, with a combination of blue and black runs. The diversity of single track trails will transport you from the historic beginning of mountain biking to new modern hand-built fun-flow trails like **Stickman**.

4 RIDING IN THE CITY After all that trail riding you may eventually feel like cranking the pace down a touch, finding some restaurants or some microbreweries and relaxing. If so, the Hub Trail could be the perfect ride for you. It's a 22.5 km easy loop of the city where you can ride at your leisure and soak up the sights. You'll pass some of the well-known tourist spots like Fort Creek, the famous locks between Lake Superior and Lake Huron and the beautiful St. Marys River waterfront.

Take a side-trip along **Whitefish Island's boardwalks and trails** where you will get a spectacular view of the international bridge as well as the famous Sault Ste. Marie rapids.

If you pass the Bondar Pavilion you may choose to hop on a 2-hour river cruise of the newly launched Miss Marie Sault Locks boat. Or if you'd like to enjoy the waterfront a different way, visit the Waterfront Adventure Centre. The WAC rents canoe, kayaks and SUPs; great for exploring the waterfront.



WORLD CLASS FISHING IN THE SOO

Photo: Alidas Rygelis

Experience high caliber fishing in the legendary St. Marys Rapids, or fish year round for some of Canada's most sought after species in the numerous lakes and rivers in the Algoma region.



POPULAR CATCHES IN THE ST. MARYS RIVER AND RAPIDS

- | | | | |
|-------------------|--------------------|----------------------|-------------------|
| • ATLANTIC SALMON | • LAKE TROUT | • NORTHERN PIKE | • RAINBOW TROUT |
| • BROWN TROUT | • LAKE WHITEFISH | • PICKEREL (WALLEYE) | • SPLAKE |
| • CHINOOK SALMON | • LARGE MOUTH BASS | • PINOOK SALMON | • SPECKLED TROUT |
| • COHO SALMON | • MUSKIE | • PINK SALMON | • STEELHEAD TROUT |

"The best rainbow trout fishing in the world is in the rapids of the Canadian Soo."

- Ernest Hemingway

A century later, the St. Marys Rapids remain a premier fishery located within minutes of downtown Sault Ste. Marie.



4 WAYS TO FISH

1 FLYFISH THE LEGENDARY ST. MARYS RIVER RAPIDS Located in the downtown core of Sault Ste. Marie, Ontario, the St. Marys River is legendary for its annual runs of Steelhead and Atlantic Salmon. In the heart of the Great Lakes where Lake Superior flows to Lake Huron, this historic fishery is home to a vast variety of iconic Canadian species. Target iconic Canadian species including Steelhead, Atlantic Salmon and four kinds of Pacific Salmon.

2 RIVER FISHING Sault Ste. Marie is a year round playground for anglers of any skill. Experience fishing for some of Canada's most iconic species in the numerous rivers in the Algoma Region including St. Marys River, Goulais River & Batchewana River. Target various species including Brook Trout, Bass, Walleye, Pike, Muskie, Atlantic Salmon, Steelhead, or Rainbow Trout.

3 GREAT LAKES FISHING Experience fishing the Great Lakes by fly, spin, kayak or boat fishing. Target the generous population of Trout, including Brook Trout, Lake Trout and Rainbow Trout or during specific times of the year, various species of salmon.

4 ICE FISHING Take in the peaceful surroundings, winter scenery and wildlife while cutting through layers of thick ice on a variety of inland lakes or along the shores of mighty Lake Superior. Target species such as Whitefish, Perch, Pickerel, Pike or Lake Trout.

LOOKING FOR A LOCAL GUIDE?

Angling Algoma
www.anglingalgoma.com
 705-943-5286

John Giuliani's Fishing Adventures
www.stmarysrapidsguiding.com
 705-971-3293

Redwood Fishing Charters
www.redwoodcharters.net
 705-941-8272

Superior North Charter and Guide Services
www.superiornorthcharters.com
 705-255-0389

Tyler Dunn Guiding
www.tylerdunnguiding.ca
 705-206-0984

For more information visit our website by using this QR code



FAMILY FUN IN SAULT STE. MARIE

Bellevue Park

From biking and hiking to eating delicious treats or holding giant insects, there are so many fun things to do in Sault Ste. Marie with the family!

family

THE HUB TRAIL AND BOARDWALK The Hub Trail is a 22.5km loop of the city, perfect for biking or hiking. Take a 5km there-and-back hike or bike ride with the family on the Fort Creek section. Three beautiful bridges over the winding creek below will give great opportunities for photos or snack breaks. Stay on the Hub Trail and head to the waterfront boardwalk to explore the city and enjoy the sights of the St. Marys River. Seasonal bike rentals are available. Check out the activity directory for list of rental locations.

SAULT STE. MARIE CANAL NATIONAL HISTORIC SITE The Miss Marie will pass through the Canadian locks, but you can visit this historic site on land too. Enjoy watching the leisure craft 'locking-through' and learn about the history of the famous site, which dates back to 1895 and check out the new visitor centre, which opened last year. Nearby is Whitefish Island, a culturally significant island belonging to Batchewana First Nation. Learn about the history of the island and the Ojibway people through some interpretative signs found along the trails.

MISS MARIE The Miss Marie Soo Lock Tour boat runs from May 15 to mid-October. This is a great 2-hour excursion along the river and through both Canadian and American locks with plenty of sights to see. Keep an eye out for one of the huge Lake Superior 'Lakers' that may also be passing through the locks!



Miss Marie

BELLEVUE PARK Another great stop for families is Bellevue Park and Topsail Island. The Park actually has four separate playgrounds with swings, slides and all things kids love. Topsail Island, which joins Bellevue Park at the river's edge, is a cute 1km side trail, plus it has a giant blue Muskoka chair! The whole area has plenty of picnic tables, winding paths and open spaces making it a great spot for a family.



Bellevue Park



Bushplane Museum

WHAT TO DO IF IT'S RAINING?

The Bushplane Museum is the perfect rainy day attraction. Kids will charge around exploring and interacting with all the exhibits and parents will enjoy taking in some of the most iconic planes in Canadian history. Entomica, inside the museum, is an insectarium where you can hold some very interesting creatures!

HIAWATHA & CRYSTAL FALLS

A 10-minute drive from downtown takes you Hiawatha Highlands and Crystal Falls, located in Kinsmen Park. Hiawatha is home to 35km of modern mountain biking trails, a new pump track and also has hiking trails and two small parks with swings. Crystal Falls is a beautiful spot for pictures and is just a short walk from the parking lot at Kinsmen Park.



Sugar

ICE CREAMS, BUTTERTARTS & TREATS

Check out Elliott's Ice Cream on Queen Street or the Gelato Mill at the Machine Shop. Beavertails is next to the pavilion and where you can catch the Miss Marie Lock Tour Boat. The Queen's Tarts is buttertart heaven, also on Queen Street. Holy Cow and the Big Moose Ice Cream Parlor's are also favourites.

- Elliott's Ice Cream** 810 Queen Street East
- The Big Moose Ice Cream Parlor** 1332 Great Northern Road
- Holy Cow Ice Cream Parlor** 938 McNabb Street
- The Gelato Mill** 83 Huron Street
- Sugar** 765 Queen Street
- The Queen's Tarts** 472 Queen Street East



SHARE YOUR PHOTOS WITH US!
#outsideofexpected



FOUR TOP GOLF COURSES

Sault Golf Club

1 CRIMSON RIDGE Crimson by name, and if you play in the fall when the trees are changing colour, Crimson by colour. In the northern part of the city, this course is built around some of the most beautiful hardwood forests of the Canadian Shield. Enjoy waterfalls, creeks, numerous elevation changes, and incredible views and vistas awaiting on this scenic par 72. Pro-shop and driving range available.
418 Fourth Line West | www.crimsonridge.com

RESTAURANT *Embers On The Ridge.* Enjoy brunch, lunch or evening fine-dining in their newly renovated restaurant, or outdoors on their beautiful patio overlooking the course. Menu items include steak & seafood.
www.crimsonridge.com/embers

2 ROOT RIVER GOLF CLUB This wonderful, 9-hole course is located to the north of the city. Wide fairways and accessible greens, with some interesting elevation, make it a great course for a family golf day. There's also a driving range and a pro shop.
85 Old Hwy 17 North | www.rootriverco.com

RESTAURANT *The Root.* Dine in or outside on the patio overlooking the first tee in this fabulous restaurant, a favourite of many. Menu items include steak, seafood & pasta.
www.facebook.com/rootrivergolf/

3 SAULT STE. MARIE GOLF CLUB This beautiful 18-hole, semi-private course situated just east of downtown is the beating heart of the city's golfing scene. Stanley Thompson designed, with a great blend of the fairway, rough and water, you can walk or ride this par 72 course. There's also a pro shop and driving range.
1804 Queen Street East | www.saultgolfclub.ca

RESTAURANT *Mulligans Irish Pub.* Enjoy classic pub fare and locally brewed beer in this traditionally atmospheric watering hole.
www.mulligansirishpub.ca

4 SILVER CREEK Indigenous-owned and operated, Silver Creek is situated in the Garden River First Nation. The Arthur Hills designed 18-hole championship layout is one of Northern Ontario's longest courses, with a par of 72 and measuring from the championship tees 7435 yards. There's a driving range, pro-shop and carts are available.
104 Belleau Lake Road, Garden River
www.golfsilvercreek.com

RESTAURANT *The restaurant at Silver Creek* serves all day breakfast, as well as your favourite hearty restaurant fare including club sandwiches and burgers and a fish-fry on Fridays.
www.golfsilvercreek.com/restaurant/



family

When the summer hits the beaches come calling. Here are some of our best sandy beaches you can visit.

AGAWA BAY BEACH At the southern end of Lake Superior Provincial Park lies this stunning 3km sandy beach. Passes are available for day use or camping at the visitor center.

BATCHEWANA BAY PROVINCIAL PARK & BEACH Batchewana Bay's sun-soaked, 5km beach is the perfect place to spend a summer's day with the family. The water here is shallow, warm, and perfect for swimming! Facilities include picnic tables and bathrooms. Passes for this day-use provincial park can be made online or at the visitor center located on Highway 17.



Point Des Chenes



Pancake Bay

HARMONY BEACH This is the first beach you will encounter when traveling north from the city. Only a half-hour drive and features 3.2km of stunning sand and great swimming.

PANCAKE BAY PROVINCIAL PARK & BEACH

Around the corner from Batchewana lies the jewel in the crown of beaches. Golden sand beach and crystal clear Caribbean blue water make it a favourite. Day passes are available as well as overnight stays in the campground.

POINT DES CHENES A family-friendly sandy beach in Sault Ste. Marie city limits. This slice of paradise is only a short drive from downtown or via a city bus that runs on weekends in the summer.



MISS MARIE LOCK TOURS

Sault Lock Tours presents the Miss Marie, a day or evening tour experience in Sault Ste. Marie, Canada, and the perfect relaxing way to see the sights of the famous St. Marys River.

The Miss Marie takes passengers on a 90-minute cruise up and down the picturesque St. Marys River passing a number of sights both familiar and new. Audio commentary provides fascinating insights as the boat cruises along the Canadian shore, passing such sights as Clergue Park, The Art Gallery of Algoma and the Canadian Bushplane Heritage Centre.

When the Miss Marie passes over to the US side, she navigates along the shores of Sault Ste. Marie, Michigan, where passengers get a close up view of the Saint Marys Falls Hydropower Plant, the George Kemp Marina, and Soo Locks Park.

For many a highlight of the tour will be 'locking through' both the Canadian and US locks. On the US

side, passengers can wave to people in the Soo Locks Observation Platform, then look up as the boat travels underneath the towering and iconic international bridge.

As the Miss Marie circles back to the Canadian side passengers can enjoy the sights of Whitefish and St. Marys Islands, and learn more about the history of the area including the emergency swing bridge dam and the Sault Ste. Marie Canal National Historic Site.

Wave to Lake Superior 'lakers' as well as pleasure boat riders on this famous waterway. Or just sit back, relax, and take in the many sights of this beautiful lock tour.

The Miss Marie launches its inaugural first full season on May 15 in 2023 and will run through summer up until the middle of October.



GET THE FACTS

Where: Bondar Marina alongside the Bondar Pavilion

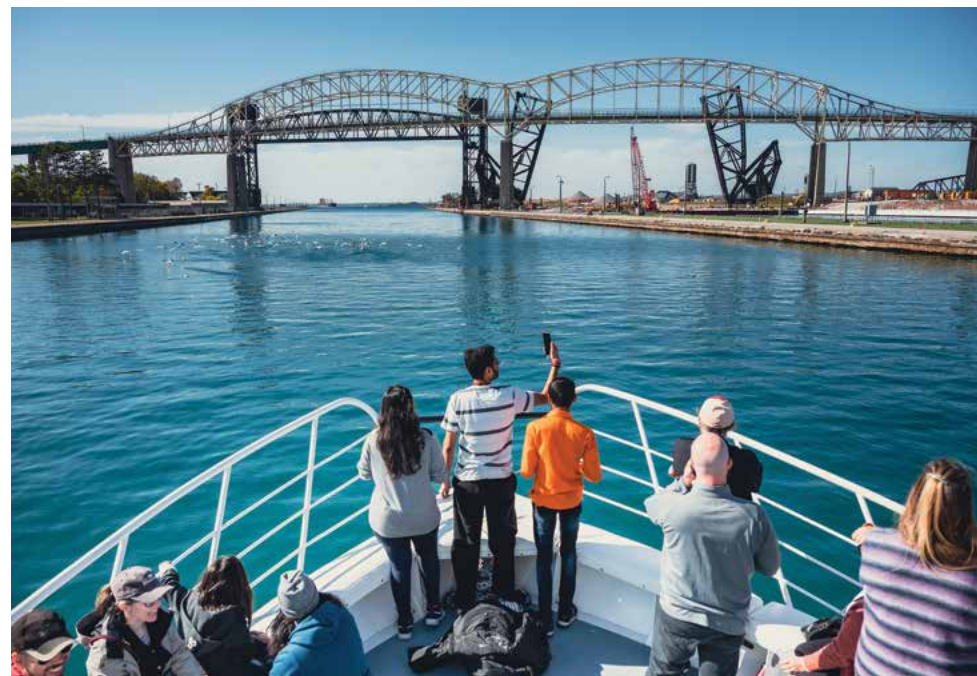
When: May to October. Tours leave daily at 10am, 1pm and private charters depart each day at 7pm.

Who: All ages are welcome, with seating and standing options available.

Food or drink: Yes! Food is available and the boat is fully licensed.

Book your tickets in advance as space is limited.

For more information visit: www.saultlocktours.ca



THE LAKE SUPERIOR COASTAL DRIVE

Sault Ste. Marie is the perfect destination to explore the beautiful Lake Superior coast.

By Sault Tourism

A drive along the Superior coastline from Sault Ste. Marie will let you experience the 'Big Lake' in all its rugged and natural beauty. Visit in spring, summer, fall or winter for a different experience each season. Here are some highlights to visit along the way.

HAVILAND BAY Driving north on highway 17 from the city, your first close up view of Lake Superior will be at Haviland Bay. As you drive through Haviland you'll pass over a causeway, which offers

spectacular views of the lake on one side, and rugged, forested hills of the Canadian Shield on the other.

CHIPPEWA FALLS Continue driving north from Haviland and soon you'll reach Chippewa Falls, the halfway point of Trans Canada Highway, highway 17. Chippewa Falls is also a significant spot on the Group of Seven driving tour, with the falls inspiring a number of famous paintings including "Streambed, Lake Superior Country". and J.E.H. MacDonald's 'Batchewana Rapid'.

BATCHAWANA BAY AND THE VOYAGEUR LODGE

Batchawana Bay, in Batchawana Bay Provincial Park, is another beautiful stop. The 4km long sandy beach is the star of the show, with some of the warmest water in Lake Superior making it a popular spot for swimmers and beach goers. Stop by the Voyageur Lodge for some famous apple fritters, lunch, or a souvenir from the gift shop.

PANCAKE BAY, AGAWA CRAFTS AND THE CANADIAN CARVER

Pancake Bay provincial park, is the perfect spot to get out and explore. The beach is simply immaculate; 4km of perfect white sand and crystal clear water, great for swimming in and generally relaxing on. Then there is the Edmund Fitzgerald Lookout hike trail, a 2-3 hour round trip that takes you up to an incredible view of the Superior coast and the resting place of the SS Edmund Fitzgerald, which tragically sunk during a November storm in 1975.

Agawa Crafts and the Canadian Carver is an impressive stop, with some beautiful one-of-a-kind carvings, painting and other crafts offering the perfect souvenir for visitors.



SAWPIT BAY AND THE DRIVE NORTH

Continuing past Pancake Bay, highway 17 turns north again, and the coast leaves the relative shelter of Whitefish Bay. Now, more exposed to the westerly winds and storms of Superior, the shoreline becomes more rugged, more rocky but just as beautiful as further south.

ALONA BAY Fifteen minutes north of Sawpit Bay is Alona Bay, a beautifully rocky Lake Superior Beach. Alona Bay lies inside two of the additional, southerly parts of Lake Superior Provincial Park. A roadside rest-stop allows visitors to get out and enjoy the stunning scenic lookout across Alona Bay.

LAKE SUPERIOR PROVINCIAL PARK VISITOR CENTRE AT AGAWA BAY

Lake Superior Provincial Park Visitor Centre is located at the south end of 'the Park', as locals call it, roughly 90 minutes north of Sault Ste. Marie. The visitor centre is a great stopping point with lots of information about the area, paths to the beautiful Agawa Bay beach, helpful staff and a giftshop. The centre itself is filled with interactive displays that highlights the "Power of Lake Superior" as well as the park's cultural history and natural ecosystems.

AGAWA ROCK PICTOGRAPHS A short drive north from the visitor centre takes you to the Agawa Rock Pictographs. The Pictographs is one of the most famous pictograph sites in Canada and is one of the most visited indigenous archaeological sites too. It is a sacred site where generations of Ojibwe have come to record dreams, visions and events. Please respect and preserve the pictographs by not touching the paintings. The images visible today, include canoes and animals such as moose, deer, bear and caribou. The most recognizable painting consisting of a spined-horned animal said to be "Misshepezhieu", or the Great Lynx, the spirit of the water.

Read more about this important area here by using this QR code



Quattro Hotel & Conference Centre

an Ascend Collection Hotel by Choice Hotels

Complimentary hot continental breakfast, free WiFi, indoor heated salt water pool and sauna, in-room microwave & fridge, Keurig coffee machine, premium bedding and upgraded amenities.

QUATTRO VINOTECCA - 3 Diamond Onsite Restaurant with modern surroundings and an upbeat vibe.

PIZZATECCA - Takeout and delivery, specializing in family favourites, comfort food, and healthy choices.

THE GREENHOUSE SPA - Premier Ranked Spa & Services. Escape for an hour, or a full, luxurious day. The spa professionals will relax and rejuvenate your mind and body with the finest services and treatments available.

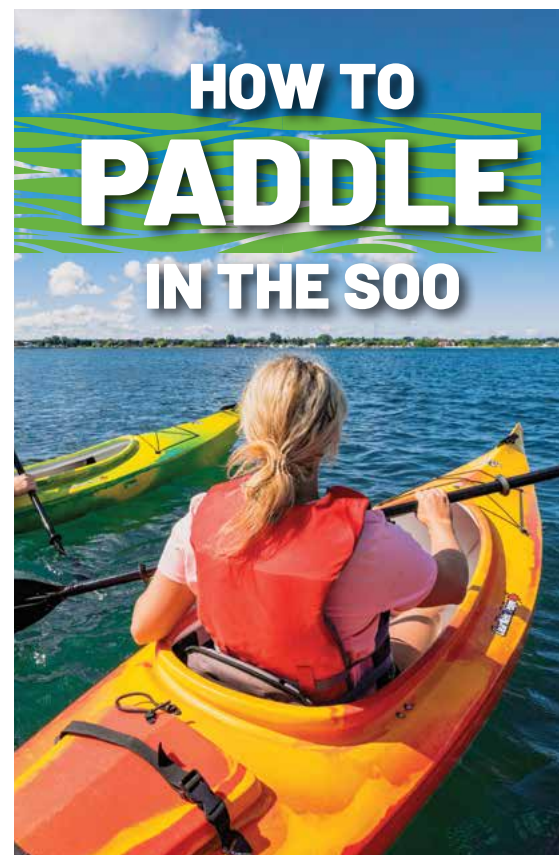


229 Great Northern Road, Sault Ste. Marie, Ontario
1.800.563.7262 or 705.942.2500 • hotel.frontdesk@quattrossm.com

WWW.QUATTROSSM.COM



the greenhouse SPA



HOW TO PADDLE IN THE SOO

GO GUIDED No boat? No problem! There are several tour operators in the city who will equip you and provide interpretive tours of the local area. Forest The Canoe offers canoe and kayak trips just north of the city on both Lake Superior and inland lakes. Thrive Tours and Lake Superior Watershed Conservancy's iconic Big Canoe runs interpretive trips along the St. Marys River and right up to the rapids.

RENT YOUR CRAFT Feeling a little more independent? The Waterfront Adventure Centre rents all kinds of paddling craft for trips up and down the river. Forest The Canoe and Thrive also offer boat rental.

DO IT YOURSELF A lot of people show up in the Soo with their boats and we have public access docks to allow you to enjoy the river. One is located at the Bondar Marina and a second public dock is located next to the Sault Naturalists Wildlife Viewing Platform just east of the Bellevue Marina. With ample parking and a fully accessible transfer system, this is one of the most popular launches along the St. Marys River.

GET THE GEAR

Up the creek without a paddle? Head over to one of these stores for assistance.

- **Atmosphere:** 293 Bay St
- **Canadian Tire:** 200 McNabb St
- **Great Lakes Outfitters:** 162 Old Garden River Rd
- **Outfitters:** 87 Huron St
- **The Trading Post:** 1332 Great Northern Rd

We are located on an awesome river between two of the biggest and best lakes in the world - of course we're all about paddling and water-sports! If you are too and want to know more, keep reading.



Photo: Colin Field and Destination Ontario

HOW TO EXPERIENCE OUR BREATHTAKING FALL COLOURS

Sault Ste. Marie is the perfect place to take in some of the most stunningly vivid fall colours in Canada – our Instagram-worthy pictures prove it. Here is a handy guide on how to experience them for yourself.

Bellevue Valley Road

BY ROAD › ENJOY A SCENIC RIDE



Enjoy our incredible fall colours from the freedom of your vehicle. Head north of the city up the Superior coast, cruise through the windy roads of the Bellevue valley or take a tour east through the picturesque Sylvan valley. You'll have plenty of chances to stop and admire the stunning vistas and winding rivers that complement the beautifully lined roadways.

BY WATER › TAKE A GUIDED PADDLE



What better way to see the full vista of fall colours than from a boat? Let our experts guide you along the St. Marys River, up the Superior coast, or to one of our many inland lakes in the area. Book a bucket list trip with Forest The Canoe, Thrive Tours or the iconic 'Big Canoe' from Lake Superior Watershed Conservancy.

BY LAND › GET YOUR HIKING BOOTS ON AND HIT THE TRAILS



The Soo is the start of so many incredible hiking trails including the Voyageur and Trans-Canada trail. Head to Hiawatha Highlands or Fort Creek to get a full taste of colours within the city. Alternatively take a scenic drive north to the Algoma Highlands Conservancy and hike King Mountain or the stunning Robertson Cliffs.

BY TRAIN › NO MORE WORDS ARE REQUIRED



The Agawa Canyon train is a Canadian Signature Experience and the perfect way to enjoy fall. Sit back, relax and watch the stunning colours of Algoma from your window on this iconic and bucket-list journey.



4 HIDDEN SPOTS WORTH CHECKING OUT

Wishart Park

HIKING ROBERTSON CLIFFS

Robertson Cliffs

Sault Ste. Marie has a number of well-known places in and around the city, including Robertson Cliffs, Fort Creek and Bellevue Park, but not everyone will be aware of these four hidden spots. Scan the QR code for the website article which contains map reference links.

1 ODENA LOOKOUT AT HIAWATHA The Odena Lookout and Odena Loop at Hiawatha Highlands is part of the Voyageur Trail. The large 'Loop' trail is a 4.2km hike that starts at Sixth Line and weaves itself over to Connor Road. Alternatively, if you just want to enjoy the incredible view, the lookout hike is a short 400 metre walk uphill. Once you get to the top, the view will take your breath away. Beautiful maple trees blended with vibrant coniferous greens make this lookout truly spectacular.

2 WISHART PARK Just off Fourth Line East, is a cute little park, and a perfect place for a short hike to take fall photos. Enjoy a walk through the woods or alongside the Root River as it winds its way south towards the city.

3 ROOT RIVER AND ROOT CASCADE Root River and Root Cascade at the west side of Sixth Line is another pretty place to visit. Beautiful falls cascade into the Root River, and the surrounding maple trees create a vibrant and bright scene.

4 GROS CAP CONSERVATION AREA The lookout at Gros Cap Conservation area is another great spot just outside the city limits. While the tree species here don't offer the vibrant red and oranges of Hiawatha, you can still enjoy fall tones with incredible views of the place where Lake Superior flows into the St. Marys river, the Gros Cap lighthouse, and any Lake Superior 'lakers' that happen to be cruising past.

For more information visit our website
by using this QR code



SHARE YOUR PHOTOS WITH US!
#outsideofexpected

Robertson Cliffs, just 30 minutes north of Sault Ste. Marie, is one of the best hikes in Ontario and one of the best ways to experience the fall colours. Views from any of the incredible lookouts stretch for miles out across Bellevue Valley, towards the Goulais River, and as far as Lake Superior.

WHERE ARE ROBERTSON CLIFFS? The Robertson Cliffs are located approx. 30 minutes north of Sault Ste. Marie, just east of the trans-Canada Highway, Highway 17. There are three parking areas at the trailheads. Precise details are on our website, use the QR code below.

HOW LONG DOES THE HIKE TAKE AND HOW DIFFICULT IS IT? The route to the top can take between 45 minutes and 2 hours depending on which trail you take, and then the same on the way back. So allow yourself at least 2 hours as a minimum. It's moderately difficult because there is some scrambling over rocks, small streams, and occasional fallen trees.

WHAT ROUTES ARE THERE AND ARE THE TRAILS WELL MARKED? Three routes are available that will get you to the top. The Blue and White routes are 2km long and take 45 minutes. The yellow trail is a longer 2.5km trek that takes you past beautiful waterfalls. Allow 2 hours for this hike to the cliffs.

WHAT ABOUT THE LOOKOUTS AND WHAT IS THE VIEW LIKE? There are three main lookouts with several others you can find along the way too. The views... judge for yourself.

ARE THERE ANY TOUR GUIDES? Three awesome guides can show you the way to the top of the cliffs and give their personal insights into the area: Thrive Tours, Forest The Canoe, or Blaq Bear Eco Adventures. Contact information is available in the Activity Directory under Guided tours.

WHO MAINTAINS THE TRAILS AND HOW CAN I HELP? The trails are maintained by the Algoma Highlands Conservancy, a not-for-profit organization that is run by local volunteers. They rely on memberships and donations. To help support the highlands for generations to come, visit:

www.algomahighlandsconservancy.com

For more information visit our website
by using this QR code



EXPERIENCE WINTER IN THE SAULT



Top
Pick

We own winter, there we said it, and a visit to the Soo is a chance to experience winter the way it should be experienced. Here are some ideas to get you started.

FAT BIKE THE TRAILS It's been called one of the fastest growing winter sports and Sault Ste. Marie is the perfect place to visit with your fat bike. We have over 50km of trails at Crimson Ridge, Hiawatha Highlands or Whitefish Island. Check out our website or the Sault Cycling Club for all the latest info. www.saultcyclingclub.ca

SNOWSHOE THROUGH A TRUE WINTER WONDERLAND Being in the Lake Superior snowbelt we have an abundance of snow and snowshoeing is a great way to have fun in it all. We have trails at Crimson Ridge, Hiawatha Highlands, Sault Golf Club or Stokely Creek Lodge. Or take a tour with Forest the Canoe, Thrive Tours, Blaq Bear Eco Adventures or Lake Superior Watershed Conservancy.

TAKE A TOUR TO THE SPECTACULAR ICE CAVES These were recently voted one of 52 must visit places by New York Times. Enigmatic, mysterious and just beautiful to see. We recommend going with an expert guide and Forest the Canoe offer a guided tour with all the safety equipment included. www.forestthecanoe.ca/tours



GET YOUR SKATES ON IN ONE OF OUR MANY OUTDOOR RINKS What better way to enjoy winter in the Soo than on skates? We have a beautiful woodland trail at Crimson Ridge, a delightful waterfront trail at Clergue Park and an awesome speed skating track at the Art Jennings Oval.

SKI THREE DIFFERENT WAYS!
DOWNHILL SKIING Big vertical, rugged terrain, Searchmont Resort has some of the best downhill skiing, as well as one of the highest verticals in Ontario. Read more about Searchmont on page 26.

CROSS-COUNTRY SKIING Sault Ste. Marie offers some of the best cross-country skiing in North America, with over 150km of groomed trails. Stokely Creek Lodge has 100km of trails, groomed for both classic and skate skiing and spread over 12,000 spectacular acres of the Algoma Highlands. Breathtaking scenery including frozen lakes and waterfalls, endless forests, and amazing vistas like

the one at the top of King Mountain, make Stokely a bucket-list destination for nordic skiers. Enjoy Scandinavian lodging and stay warm in one of the six warming huts along the way; it's an experience that will bring you back year after year.



Situated just 10 minutes from downtown, Hiawatha Highlands offers more than 50km of beautiful skiing in towering Pine forests. Click here for a link to all trail and maps or read more about all that Hiawatha Highlands has to offer! Top-tip: enjoy a nighttime lantern ski, which happens a few times a season!

BACKCOUNTRY SKIING If you like your vertical off the beaten track, check out the incredible backcountry skiing at Bellevue Valley Lodge. Read more about skiing in the Soo in our dedicated Ski page. www.saulttourism.com/outdoors/ski/

ICE CLIMBING Sault Ste. Marie is a city that DOES winter – the snow, the ice, the winter-loving people and we have incredibly beautiful, frozen waterfalls too! Ice climbing is great way to experience winter; it's physically challenging, it will get your adrenaline going, it's beautifully awe-inspiring, and it's a truly unique adventure!





SEARCHMONT RESORT

Big vertical, rugged terrain, Searchmont has some of the best downhill skiing in Ontario. The mountain boasts 703 feet of vertical, 26 runs, 100 acres of rolling mountain, terrain-park, 4 lifts and a snow school.

The 2022/2023 season saw the opening of the new Buzzsaw triple lift, with two new green runs; Lumberjack and Buzzsaw. This addition makes for a great transition between the Learning Centre and the main hill.

Last season the return of night skiing and increased snow making ability, led to an opening day in November (the earliest on record) and over 100 days of skiing!

Searchmont is also a fully equipped resort with a restaurant – The Kiln, which serves deliciously warming pub style lunches, a bar, a pro-shop with all the mountain equipment you would need, including ski and snowboard rentals.

Escape the crowds and the lift queues of jam-packed southern Ontario ski hills and get away to this stunning, adventure-packed mountain.



SEARCHMONT AT A GLANCE

RUNS	26
VERTICAL	703
ARES	100
LIFTS	4
MUST VISIT	New Kiln Restaurant



ADVENTURE

SNOWMOBILING IN SAULT STE. MARIE

Rev your engine and make some tracks on big powder, groomed trails or remote wilderness lakes.

City where you can 'refuel' in one of our many local restaurants and experience local brew on tap for your post-ride enjoyment.

Looking for fun on your sled? Make Sault Ste. Marie your next destination. We have some of Ontario's best powder sledding, precision groomed trails and pristine wilderness right at your doorstep.

Sledding in Algoma region is truly a rider's paradise. Day trips, multi-day trips or week-long bucket-list adventures are possible—right from the comfort of your hotel room in the city.

Check out our new 'Soo Highlands Loop' trail, the perfect day-ride trail. The loop starts in Sault Ste. Marie and goes north to Searchmont, where you can stop for lunch, then continues south towards the Echo Lake before circling back towards the Soo. At 169 km it provides the perfect way to experience the rugged landscapes that the Algoma Highlands has to offer. It also brings you back to the

Before you ride be sure to check in with the Ontario Federation of Snowmobile Clubs (OFSC) regarding Ontario riding permits. Detailed information regarding local trail maps and conditions is available by visiting the Sault Trailblazers website.





THE BON SOO WINTER CARNIVAL

FEB 2ND - 10TH 2024

BONSOO.ON.CA

f@MrBONSOO FEATURING...

Polar Rush **URBAN WINTER OBSTACLE COURSE**

THE POLAR PLUNGE

EDM SNO BATH ICE SLIDES & MORE!



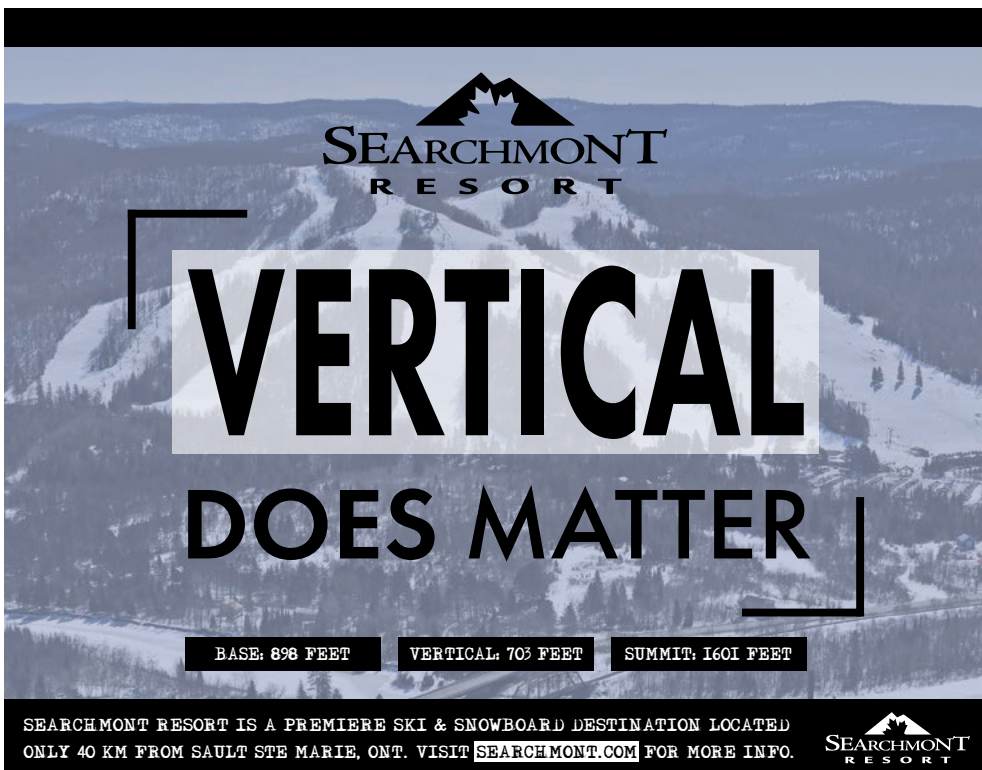

Ontario's premier destination for winter recreation.

Ski* Snowshoe* FatBike

Come, discover 50 km of groomed trails & amenities minutes from downtown Sault Ste. Marie.

HiawathaHighlands.com

HIAWATHA HIGHLANDS
ELEVATED BY NATURE



SEARCHMONT RESORT

VERTICAL DOES MATTER

BASE: 898 FEET VERTICAL: 703 FEET SUMMIT: 1601 FEET

SEARCHMONT RESORT IS A PREMIERE SKI & SNOWBOARD DESTINATION LOCATED ONLY 40 KM FROM SAULT STE MARIE, ONT. VISIT SEARCHMONT.COM FOR MORE INFO.

SEARCHMONT RESORT



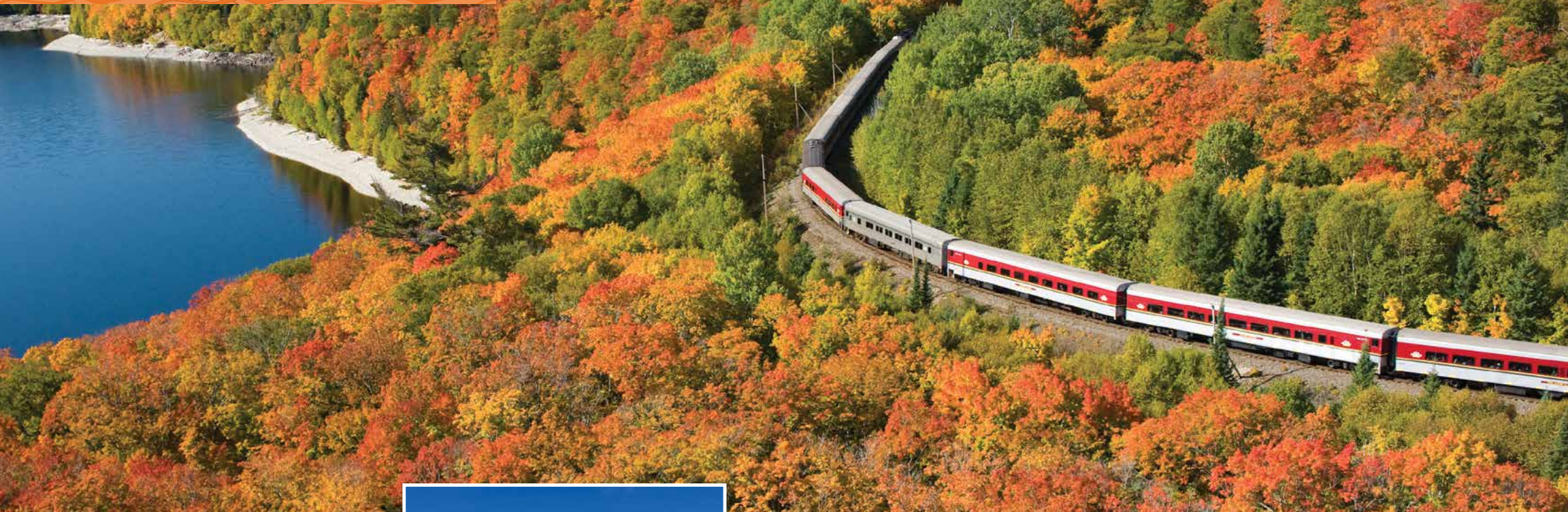
FIND YOUR TRUE NORTH EXPERIENCE

TOURS. TRIPS. OUTFITTING.

- Canoe and Kayak Rentals
- Canoe Tours and Hiking Tours
- True North Adventure Bus Day Trips

 *Forest The Canoe*

RIDE the RAILS



DEPARTURE POINT Departing from the Agawa Canyon Train Depot 87 Huron Street, located in the Canal District, this 114-mile excursion truly showcases the rugged beauty that is exclusive to the region. As you settle into your comfortable coach, you can feel the pace of life slow as the ride evokes a sense of simpler times while raising expectations for the journey that lies ahead. Traces of city life soon fade away as the Northern



Ontario wilderness begins to unfold outside the large tinted windows. The seemingly unending mixed forests of the Canadian Shield open up as you skirt the shores of northern lakes and rivers, cross towering trestles, and set eyes on the same rugged landscapes and majestic views that inspired the Group of Seven to create some of Canada's most notable works of art.

As the train winds its way through this one of a

kind terrain, a GPS triggered commentary weaves the story of the region.

Available in five languages including English throughout the coaches and French, German, Japanese, Korean and Mandarin via wireless headsets, you'll learn about upcoming points of interest as well as some of the rich history of the Ojibway, fur traders, explorers and entrepreneurs that opened up this vast wilderness.

TRAILS IN CANYON PARK



The trails in the park have been developed to provide access to the most scenic spots and to provide a wide range of walking/hiking opportunities. The trails are well maintained and are covered in fine gravel. Park staff roam the trails during the tour and you may usually find them stationed at the Lookout, Bridal Veil or the First Aid Building should you require assistance.

NOTE: Approximate trail times are for a round-trip from the park First Aid Building. Please refrain from smoking on trails.

THE TALUS TRAIL

This trail follows along the base of the west canyon wall. It will lead you past lichen covered talus slopes to the viewing platforms at North and South Black Beaver Falls (30 min return) and Bridal Veil Falls (40 min return). The water flow at all the falls is contingent on runoff from snow and rainfall and can range from raging torrents to thin trickles throughout the tour season.

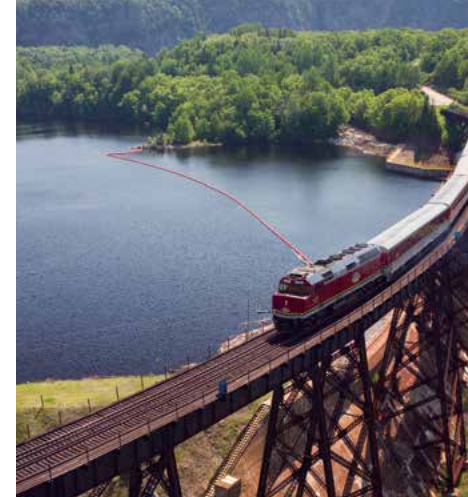
THE LOOKOUT TRAIL

A challenge for the adventurous and the energetic, this trail ascends 250ft/76.2m (over 300 stairs) above the tracks to provide a breathtaking panoramic view of the canyon.

THE RIVER TRAIL

Follow this gently rolling trail along the banks of the Agawa River to Black Beaver Falls (30 min return) and Bridal Veil Falls (40 min return). The tannin-stained waters of the Agawa River are home to speckled (brook) trout, beaver, otters, mallard and merganser ducks. Picnic tables are located along this route for a private, peaceful lunch.

FIND OUT MORE: Experience all the best the region has to offer visit www.saulttourism.com/agawa-train for more information.



GROUP OF SEVEN

Several members of Canada's Group of Seven painted in the Algoma region between 1918 and 1923, including Lawren Harris, A.Y. Jackson, Franz Johnston, J.E.H. MacDonald and Arthur Lismer. To gain access to this remote region, they rented a boxcar from the railway. The car was outfitted like a cabin and was shunted to sidings near choice painting locations. From these locations they would set out on foot or canoe to capture this untamed area on canvas. Their paintings brought this vast, rugged and beautiful part of the country to fellow Canadians and the world. Here are some interesting facts and details that you'll find along your journey:

MILE 76: MONGOOSE LAKE

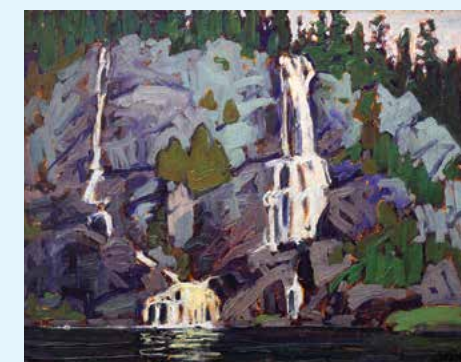
In the fall of 1920 the artists stayed in a cabin on Mongoose Lake instead of the box car to sketch and paint. One of these painting sites was discovered as recently as the fall of 2013.

MILE 92: MONTREAL RIVER/FALLS /HUBERT

The Montreal River attracted MacDonald and he made sketches in the neighbourhood of the falls that resulted in his large canvas, Falls, Montreal River. Among all the painters, he responded most deeply to Algoma, creating a magnificent series of large scale compositions.

MILE 113: AGAWA CANYON

The artists stayed in their boxcar studio in Agawa Canyon to sketch for several days and then using an Algoma Central Railway hand-car, they ventured north and south to sketch and paint.



Lawren Harris, Waterfall, 1919



ENTOMICA
INSECTARIUM

50 Pim Street,
Sault Ste. Marie, ON, P6A 3G4
(705) 297-5777 | entomica.com
bugus@entomica.com

The Soo's Own Insectarium!

Facebook, TikTok, Instagram, Twitter icons
@entomica

**Come 'n' see
what the 'buzz'
is all about!**



CANADIAN BUSHPLANE
HERITAGE CENTRE

Take off on a Bushplane adventure!

Over two dozen aircraft exhibits
Wildfires! Theatre
Kids Flight Centre
NEW Microsoft Flight Simulator experience
Wings 'n Airplane Things Gift Shop
...and so much more!

COME VISIT US TODAY!

50 Pim Street, Sault Ste. Marie, ON
705-945-6242 | bushplane.com



SHINGWAUK KINOOMAAGE GAMIG
Centre of Excellence in Anishinaabe Education








SHINGWAUK KINOOMAAGE GAMIG


PROGRAMS & COURSES:

- Anishinaabemowin
- Anishinaabe Studies
- Culture and Land Based Learning



OUR WORLDVIEW. OUR TRUTH.



www.shingwauku.org
(705) 998-2496



Ermatinger Clergue National Historic Site
Enter at 800 Bay St. - Open year round
"Discover Our Heritage"

www.ecnhs.com 705-759-5443 old.stone.house@cityssm.on.ca

CANADIAN BUSHPLANE HERITAGE CENTRE



CANADIAN BUSHPLANE HERITAGE CENTRE

50 Pim Street
www.bushplane.com

The CBHC is the only facility in North America dedicated to the history of Bush Flying and Forest Fire Management. This interactive museum is on site of the original 64,000 square foot hangar where water bombing first began. Take in over 24 aircraft along with a flight adventure simulator and theatre with a fire fighting adventure, and an interactive Children's Flight Centre. Kids can climb a fire tower and sit in the cockpit of a vintage bushplane. Fun for all ages.



Bushplane Days
September 17-18, 2023
Two days of family-friendly,
carnival fun.

HOME TO CANADA'S FIRST FEMALE ASTRONAUT

On January 22, 1992, Dr. Roberta Bondar, a native of Sault Ste. Marie, Ontario, boarded the Discovery and became the first Canadian Woman in Space. The Canadian Bushplane Heritage Centre is proud to host her exhibit exclusively, to share her achievement with visitors year-round.

IRON WILLED: WOMEN IN STEM Ingenium's Iron Willed: Women in STEM will be on display March to May 2023. The travelling exhibit features Canadian women with achievements in science, technology, engineering and mathematics. This featured exhibit will coincide with the unveiling of the revitalized Women in Aviation exhibit at the Bushplane.



Dr. Roberta Bondar



ENTOMICA INSECTARIUM

ENTOMICA

www.entomica.com

Located in the Bushplane Museum is Entomica- a place where you will discover the fascinating and often misunderstood world of insects, reptiles and amphibians. See and touch some of the world's most intriguing species and get ready to be amazed.

NAME: "TYSON"
SPECIES: BEETLE

FUN FACT: Entomica showcases several different species of beetles a day but in the facility they have 15 to 20 live beetles with the species turning over regularly. There are over 200 species of pinned beetles that can be viewed.



NAME: "CHARLOTTE"
SPECIES: BLUE TARANTULA

FUN FACT: The Brazilian Blue Violet is a new world Tarantula meaning they use urticating hairs for self-defense and territorial markings. This species is known for its vibrant blue colour. Their natural environment in eastern Brazil can have an unstable climate between wet and dry, as well as hot and cold. As a defense mechanism, they can burrow under the ground to escape these conditions until less extremes are reached.





ERMATINGER OLD STONE HOUSE

ERMATINGER CLERGUE NATIONAL HISTORIC SITE & DISCOVERY CENTRE

800 Bay Street | www.ecnhs.com

The Ermatinger Clergue National Historic Site offers a year-round cultural attraction for residents and visitors to Sault Ste. Marie. The Site is home to an interactive Heritage Discovery Centre and two of the oldest stone buildings located northwest of Toronto – the Ermatinger Old Stone House and the Clergue Blockhouse. With many exhibits and interactive features, the Heritage Discovery Centre promises to make history an engaging experience for everyone.

THE POST GIFT SHOP

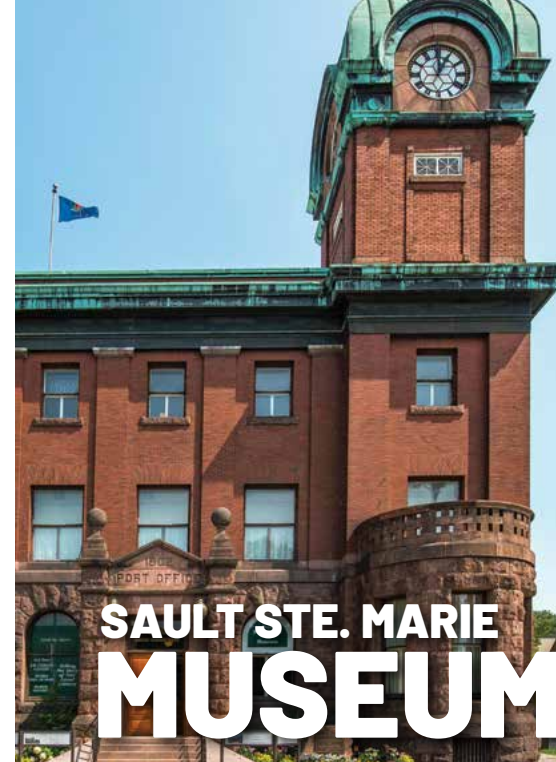
Visit the Post Gift Shop on site and browse a signature line from the Hudson Bay Company, Canadian souvenirs, maple products, branded Sault Ste. Marie souvenirs and many other unique locally made items.



HARVEST FEST & FALL RENDEZVOUS

September 20-23, 2023

Experience 1812 era re-enactors bringing history to life and commemorate the War of 1812. Personas on site depict the Women of the Era, Voyageurs and Coureur du Bois as well as the Indigenous alliances. The festival features live demonstrations of cannon and musket firing, music and food celebrating the fall harvest.



SAULT STE. MARIE MUSEUM

SAULT STE. MARIE MUSEUM

690 Queen Street East | www.saultmuseum.ca

2023 marks an important milestone for the Sault Ste. Marie Museum. This year the museum will celebrate its **40th anniversary** at 690 Queen Street East, also historically known as the Old Post Office or The Dominion Building. The museum moved into the heritage building in the fall of 1983. The Museum is gearing up for a unique and exciting anniversary year of featured events, exhibits, and programming! The Sault Ste. Marie Museum welcomes visitors year round to explore three floors of exhibit galleries that depict the heritage of Sault Ste. Marie.

DID YOU KNOW?

THE BALCONY: The museum's historic stone balcony has been a part of many community parades, marches and gatherings for over 100 years. Many city officials would partake in community celebrations by standing on the balcony to oversee the events on Queen and East Street. Today, the balcony is no longer in use. The original door that led to balcony is now a window.



Now and then:
The museum today
and in 1902

CROWN AND BALL: The crown and ball which adorned the top of the copper cornice on the clocktower was installed during initial construction in 1902. It was removed from the building in the late 1950s due to safety concerns as the tower roof was deteriorating.

PAST TENANTS: Between 1940 and 1970, the 1st and 2nd floors were used as government office spaces. Some of these occupants included, Public Works of Canada, RCMP, National Employment Service, Customs, Weight and Measure, Dominion Immigration and the Indian Agent. The Post Office moved out of the building in 1949.

By 1972 most of the Federal offices and other tenants moved out of the building. It would stay vacant for another 10 years until the city purchased the building in 1982. The museum would move in one year later.



Top: Past
Tennants
Left: Museum
Balcony

SSM CANAL NATIONAL HISTORIC SITE



THE SAULT STE. MARIE CANAL NATIONAL HISTORIC SITE

1 Canal Drive | www.parkscanada.ca/sault
Open mid-May to mid-October

Just a short distance from downtown Sault Ste. Marie, discover an urban oasis at the Sault Ste. Marie Canal National Historic Site. Once a part of the busiest commercial lock system in the world, today the canal is a premiere tourist attraction. Learn about the construction of the canal and the significance of the St. Marys River rapids to the Anishinaabe and Métis Peoples in the new Visitor Centre located in the historic Stores Building.

FAT BIKE RENTALS

Rentals are available on site from May to October. Ask a Parks Canada Staff member for details.

NEW INDOOR AND OUTDOOR EXHIBITS

Watch the lock in action with boats rising from Lake Huron to Lake Superior. Venture out on the trails by foot or bike, take a guided site tour or enjoy an afternoon tea at the elegant Superintendent's Residence. The Sault Ste. Marie Canal National Historic Site is a place to escape and to connect with nature and history.



THE CANAL DISTRICT

www.canaldistrictssm.ca | 705-759-9090

Once the site of a Northwest Company trading post (established in 1874) followed by the home of Francis H. Clergue and Sault Ste. Marie's Pulp and Paper Company (later known as St. Mary's paper) this downtown location is steeped in history. The buildings on this site have been admired for their unique architecture with Romanesque Revival style and iconic reddish sandstone drawn from the waters of the St. Marys River. The first canal on this site was built in 1798 to help water traffic bypass the St. Marys River Rapids connecting Lake Superior and Lake Huron. A replica of this "bateau lock" is currently located north of the Algoma Conservatory of Music building.

While at the Canal District enjoy delicious dining at one of the many restaurants on site including:

- The Boiler Room
- The Mill Steakhouse & Wine Bar
- The Gelato Mill
- The Steamfitters Lounge
- The Blockhouse Pub

THE AGAWA CANYON TRAIN STATION

The newly constructed Train Station features Indigenous art murals including National Renowned Indigenous Artist John Laford, and his commissioned piece for the original meeting place, Baawaating, the 'Spirt of the Mighty Sault Rapid'. The Indigenous story of the Creator and Turtle Island, is captured beautifully in the full-length floor mural from Indigenous Artist, Thomas Sinclair.

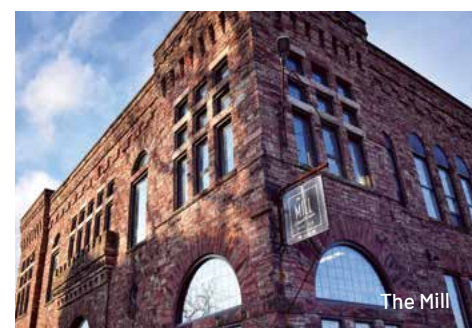
THE LOFT AND THE ALGOMA CONSERVATORY OF MUSIC

www.algomaconservatory.com/the-loft

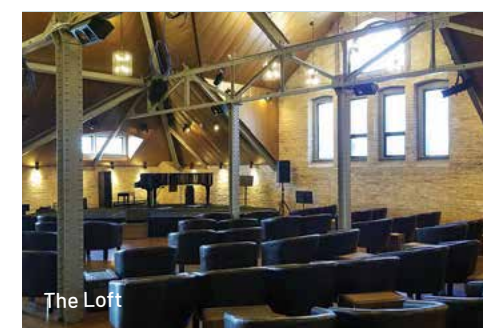
The Loft is a remarkably unique venue for performance, recording and special events. It is located in the historic Algoma Conservatory Building, built in 1901. The soaring steel trusses, copper clad ceiling, bare brick walls, and heritage hardwood floors create a wonderfully natural sounding acoustic experience that has to be heard to be believed. The Algoma Conservatory of Music hosts year round events at The Loft featuring a mixed-genre of concerts with outstanding Canadian and International artists.



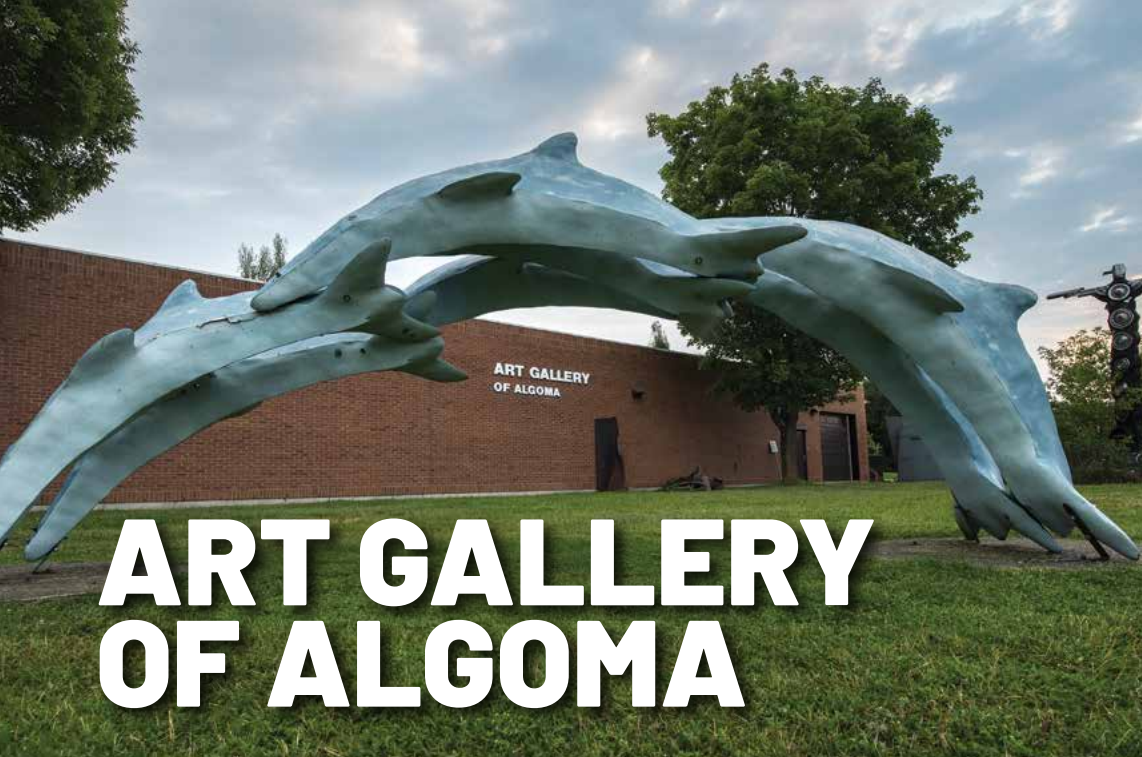
Agawa Canyon Train Station



The Mill



The Loft



ART GALLERY OF ALGOMA

ART GALLERY OF ALGOMA

10 East Street | www.artgalleryofalgoma.com

The permanent collection of the AGA is over 5,000 artworks, many by well-known Canadian artists. Visitors can view four exhibition spaces featuring a variety of exhibits including local art and painting from the Group of Seven.

SCULPTURE PARK The natural beauty of the waterfront and the city's boardwalk makes a perfect backdrop for the Elsie Savoie Sculpture Park.

GROUP OF SEVEN The Group of Seven, are iconic landscape painters who are closely connected to the Algoma Region. This group of Canadian artists, became revolutionary for their time when they started developing a new style of painting in Canada from 1920 to 1933. Influenced by the Canadian landscape their work, which often featured rugged, uninhabited landscapes, played a significant role in shaping the way Canadians viewed their country and its wilderness. The group's work continues to be celebrated and is considered some of the most important in Canadian art history.

Learn more about them and their unique style of painting Northern Ontario's beauty and their contribution to the formation of Canadian art history by visiting the Art Gallery of Algoma or www.MomentsofAlgoma.com

TOURS & PAINTING LESSONS

Feeling creative? Join the AGA for paint lessons in the style of the Group of Seven.



GIFT SHOP

The Gallery Shop offers a wide selection of gifts made by local artists, as well as the Group of Seven items.

IN THE GALLERY for July and August

The Art Gallery of Algoma has an ever rotating collection of masterpieces.

Gallery #1

Patterns & Parallels: The Great Imperative to Survive

A timely exhibition that highlights three endangered birds that are now facing the challenge of climate change—the Lesser Flamingo, the Whooping Crane and the Piping Plover. This initiative was inspired by the natural phenomena of avian migration coupled with Dr. Bondar's lifelong passion for flight and her unique perspective of planet Earth gained on her pioneering international space mission in 1992. The exhibition consists of 30-35 large, dramatic colour prints of Dr. Bondar's aerial and surface images, plus selected NASA space images.

Gallery #2

Franklin Carmichael: A Reverence for Nature

Franklin Carmichael is one of the seven founding artists who formed Canada's iconic "Group of Seven" in 1920. This exhibition will be featured in the spring-summer of 2023. Until now, the Gallery housed just one work by Carmichael but this will now ring that number up to twelve.

Lobby

Woodland Art at the AGA

The AGA is proud to hold Woodland style artworks in the permanent collection. Throughout the months of July, August and September various Indigenous artists from the AGA's permanent collection will be featured. Local artist, Lucia Laford will offer an intro workshop about the symbolism and meaning behind the Woodland style through drawing, painting, leather work, beading - to mention just a few.

MORE LOCAL GALLERIES

With spaces for local artists to create and get inspired The Art Hub at Spring (504 Queen Street East) and The Artesian (514 Queen Street East) showcase rotating exhibitions of talent never seen before. Call 705-542-2301 for viewing of local paintings, pottery, sculpture, fiber art and jewelry.



Roberta L Bondar

36 Young Lesser Flamingo Beak on Water
Phoeniconaias minor
IUCN designation: Near Threatened
Lake Bogoria National Reserve
East Arica Rift Valley, Kenya, Africa



Franklin Carmichael
Untitled (Winter Landscape), c.1914-1918
Oil on pressed board



Norval Morrisseau
The Thunderbird, c.1980
Acrylic on canvas

Collection of the Art Gallery of Algoma. Gift of Dr. Catharine Mastin & Family - In Memory of Mary & Richard Mastin

Collection of the Art Gallery of Algoma
Gift of the Ontario Heritage Foundation

LOCAL MARKETS



FARMERS' MARKETS

Our local vendors show off their produce and talent like no other, everything from locally grown fruit, maple syrup, and baking to handmade soaps, jewelry and décor.

ALGOMA FARMERS' MARKET

The Roberta Bondar Pavilion on Foster Drive
www.algomafarmersmarket.ca
 June to October Saturdays 8am to 1pm

Algoma Farmers' Market vendors have been selling fresh, locally sourced products in Sault Ste. Marie since 1901. This heritage market is home to farm families that have been part of the tradition for generations. The market offers Algoma grown, Algoma picked and Algoma produced products.

ALGOMA MAKERS MARKET

www.algomamakersmarket.square.site

A pop-up market that showcases local small business. With over 40 makers in attendance at every market featuring sweet treats, apparel and art, it is the perfect way to support local and shop small. Visit their website to find the next location.



Algoma Makers Market

MILL MARKET

35 Canal Drive | www.millmarketssm.ca
 Year-round Saturdays 9am to 2pm
 Mid-November to Christmas
 Wednesdays 6pm to 9pm

The Mill Market is conveniently located right off the Hub Trail, just steps away from the Sault Locks and the scenic St. Marys River waterfront. Grown, raised, or crafted by Northern Ontario's farmers, ranchers, anglers, artists and artisans, the Mill Market is a great place to source local products.



HOGAN'S HOMESTEAD SUGAR SHACK

1157 Thielman Road, Goulais River, Ontario
www.hoganshomestead.ca

Hogan's Homestead is the third-largest Maple Producer in the region, with over 30,000 trees to tap. Locally owned and operated, Hogan's is known for their unique infused Maple Syrup line. Take a tour of their production facility and stop at their gift shop where they offer not only their signature Maple products but other local goods as well.

Be sure to visit their Gift Shops right in Sault Ste. Marie, Monday - Saturday at 536 Second Line West and Saturdays inside the Mill Market. Where you can find more than just maple syrup.



Hogan's Homestead

WANT TO MAKE YOUR OWN MAPLE SYRUP PRODUCTS?



Feeling extra adventurous? Hogan's "Sap Patch" lets you collect the maple sap from their trees to bring home and boil to make your own product. Coming soon in 2023 maple lovers of all ages will be able to reserve a personal maple syrup making experience onsite in their own reserved Sugar Shacks as Hogan's Sweetest Destination expands to share their product knowledge.

Enjoy guided nature walks throughout the sugar bush in the summer and snowshoeing tours in the winter through Blaq Bear Eco Adventure Route.
 705-649-2235 | carole@blaqbear.ca

MAPLE WEEKEND Enjoy all things maple! Taste test samples, facility tours and guided snowshoe hikes. This event is family and pet friendly. Join us the first weekend in April for a festival of food, local vendors and of course everything Maple!



THE CULINARY SCENE

SAULT STE. MARIE IS AUTHENTICALLY INTERNATIONAL

1



2



3



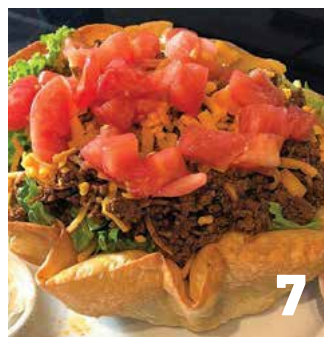
4



5



6



7

Let's Eat

1. SUNSET NOODLE HOUSE - Vietnamese
133 Spring Street
Delicious fresh Vietnamese food with sauces made in-house from the owner's own recipes.
Must Try: Bún Bò Soo - Steak Sandwich

2. CARIBBEAN JERK FUSION - Jamaican
476 Queen Street East
Experience Jamaican culture through its flavours, seasonings, and herbs.
Must Try: Shrimp Curry

3. THE TAJ - Indian
420 Great Northern Road
The taste of Indian and Hakka are inspired by fresh ingredients. Be sure to book the Taj exclusive Chef's table, where you can interact with staff as they prepare an extraordinary culinary experience for your table.
Must Try: Lamb Biryani

4. LYCHEE THAI - Thai
280 Queen Street East
Enjoy the taste of Thailand with a range of appetizers, soups, seafood, noodles and curry dishes.
Must Try: Fresh Mango Salad

5. GEORGIE'S SHAWARMA - Syrian
75 Elgin Street
Fresh traditional ingredients are the backdrop for this authentic Syrian restaurant. Owner George and staff cook with many savory spices, love and passion!
Must Try: Homemade hummus

6. WHISKY BARREL PUB - Scottish
113 Gore Street
A cozy pub with Scottish fare and live music. Sip on your favourite pint or a dram of whisky from their selection of over 50 labels.
Must Try: Scotch Egg

7. CHUMMY'S GRILL - Indigenous
262 Frontenac Street
This Indigenous owned and operated restaurant offers a hearty breakfast, fish fries every Thursday and Friday and their famous burgers with home cut fries. At Chummy's Grill you will not leave hungry.
Must Try: Scone Burger

FEEDING YOUR SOUL CAFE
96 White Oak Drive East
Bringing a home cooked meal back to the restaurant scene, this café is offering, vegan and keto friendly meal options with a gluten free kitchen.



CULINARY TOURS

BLAQ BEAR CULINARY ADVENTURES
www.blaqbear.ca/culinary-adventures.html
Taste the flavours of Sault Ste. Marie on this walking tour of downtown Sault Ste. Marie. From your downtown meeting spot you will explore Queen Street and sections of the Boardwalk. Our path includes some examples of dining with local flare as well as discovering the history and cultures of the city. Each tour has a theme which will dictate our path, highlighting examples. Our final stop is at the Machine Shop where a taxi will be available to drive you back to your starting point. The route is two and a half kilometers long and will take a little over 3 hours to complete.



For more amazing restaurants use this QR code



www.saulttourism.com/eat-drink/

CANAL DISTRICT SSM®
ESTABLISHED 1895

87 HURON ST.
DOWN TOWN
SAULT STE.
MARIE

worth the trip to the Sault

Outfitters
SSM

MACHINE SHOP

THE RINK
AT THE TRAIN STATION

THE MILL
Sault Ste. Marie
WINE BAR

BLOCKHOUSE
PUB

THE BOILER ROOM

THE BOILER ROOM

past
present
future

The Canal District in Sault Ste. Marie boasts a climbing wall, shopping, seasonal skating and dining experiences to please any palette! The entertainment and event center built in this historic building creates nostalgia and provokes creativity for any event.



Sault Ste. Marie
Canal
National Historic Site

Lieu historique national du
Canal-de-
Sault Ste. Marie

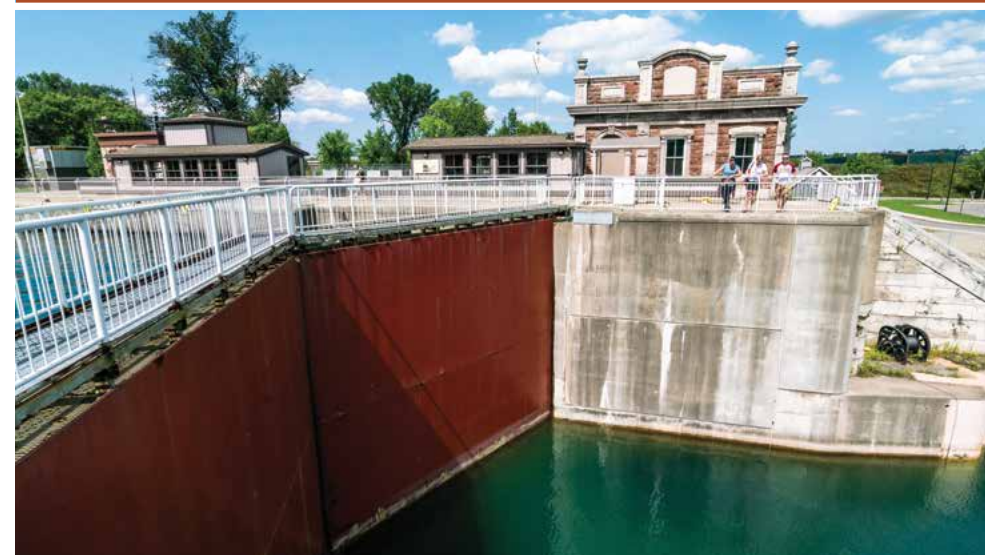
705-941-6262
parks.canada.ca/sault
parcs.canada.ca/sault

Your adventure awaits

Explore the new visitor centre, watch the lock in action, venture out on the trails, take a site tour or enjoy an afternoon tea at the elegant Superintendent's Residence.

L'aventure vous attend

Explorez le nouveau centre d'accueil, observez l'écluse en action, aventurez-vous sur les sentiers, faites une visite guidée du site ou prenez le thé en après-midi à l'élégante résidence du surintendant.



Parks
Canada



Parcs
Canada

Canada

Lychee Thai

Sensational Thai Cuisine
L.L.B.O.

Dine-In, Take-Out & Delivery
705-450-1688



280 Queen St. E. • SSM • lycheethai.ca



Fairfield
BY MARRIOTT

Welcome to the
beauty of simplicity.™



www.marriott.com/YAMFI 1-877-444-0094
633 Great Northern Rd Sault Ste. Marie, ON
Sales@fairfieldssm.com



Sault Ste. Marie Airport
Development Corporation
go there to get anywhere...



JD AERO



porter

sunwing
AIRLINES

AIR CANADA



@saultairport

www.saultairport.com



180 BAY STREET
SAULT STE. MARIE, ONTARIO

DIRECT 705-945-9264
TOLL FREE 1-800-567-4421

www.choicehotels.ca/cn096
info@qualityinnssm.com



FULL SERVICE MULTIPLE AWARD WINNING HOTEL

- CLOSEST HOTEL TO THE STATION MALL, AGAWA CANYON TOUR TRAIN STATION, CASINO AND INTERNATIONAL BRIDGE
- JOHNNY'S CHOPHOUSE & BAR
- CLOSEST HOTEL TO THE CANAL DISTRICT
- COMPLIMENTARY HOT BREAKFAST
- COMPLIMENTARY GUEST PARKING
- INDOOR POOL, HOT TUB/EXERCISE ROOM & SAUNA
- FREE WIFI

INDIGENOUS CULTURAL TOURISM

June
15-17,
2023

Traditionally known as Baawating ("the place of the rapids"), Sault Ste. Marie is a place of cultural significance. Located on the shores of the St. Marys River, the area is the connection between Lakes Huron and Superior — the Heart of Turtle Island. Indigenous peoples have occupied this region since time immemorial. Surrounded by an abundance of natural beauty, this region continues to be a traditional gathering place for the Anishinaabe people of the Great Lakes.

INDIGENOUS CREATED MURALS AND ART

Explore downtown Sault Ste. Marie and the Canal District and view the magnificent artwork of many Indigenous artists.

For more information visit our website
by using this QR code



SUMMER MOON FESTIVAL

The Summer Moon Festival is a 2022 finalist for top festival and event with Attractions Ontario. A celebration of Indigenous culture featuring the creation of large-scale public art combined with musical performances and professionally-led community programming. The Summer Moon Festival celebrates our powerful location as a traditional meeting ground.

- Indigenous vendor market
- Workshops
- Community art installations
- Live performances

SUMMER
MOON
FEST.COM



GUIDED EXPERIENCES

THRIVE TOURS Thrive Tour's is a locally owned and operated guided ecotourism company that offers water and land based experiences designed to connect people with Mother Earth's offerings. Reconnect with nature with quality experiences and adventure through guided canoe, kayak, hiking, snowshoeing, and year-round camping. Contact Brad and Amanda to create your uniquely customized itinerary.
www.thrivetours.com | 705-862-1558



Thrive
Tours

DIP YOUR PADDLE ON BOARD THE BIG CANOE

Learn about the Métis connection to Bawating and the St. Marys River through a Metis-led cultural and ecology Tour. The Walking, and Walking/Paddling Tours begin at the new Sault Ste Marie Métis Centre (136 John St.). A Métis Interpretive guide will lead the Tours. Walking Tours connect historic and community points of interest between the Centre and the St Marys River. For those on a Walking/Paddling Tour, visitors will also board our Big Canoe at Parks Canada to travel the St. Marys learning about the Métis River Lots, and community life and fishing at the rapids. Contact canoe@superiorconservancy.org to book your tour. (Online bookings will be available from mid-May.)
www.superiorconservancy.org | 705- 946-0044



Group Tour Metis Canoe

Photo: Group Tour Metis Canoe /Gary McGuffin

WHITEFISH ISLAND

A significant island with thousands of years of history lies just below the International Bridge-Batchewana First Nation White Fish Island Reserve. The Attikamek & Whitefish Island Trails located on the Island are an excellent family friendly option for all to enjoy. Plan a visit to take in the beauty, learn about the significant history, listen to the calming waters running in the rapids

and watch animals thrive in their natural habitats. The Island is home to many migratory birds, waterfowl, fox, beaver, muskrat, fish, reptiles, eagles, owls, herons, and osprey. Preservation of the land and water is extremely important. Please practice responsible stewardship and leave with nothing from the island except an amazing outdoor experience.



SHINGWAUK KINOOMAAGE GAMIG (SKG)

Shingwauk Kinoomaage Gamig is one of nine Indigenous post-secondary institutes legally recognized in Ontario and is home to the National Chiefs Library. SKG is founded on the original vision of Ketegaunseebee Ojibwe Chief, Shingwaukonse'ibun. Chief Shingwauk's vision was an Anishinaabe Teaching Lodge with an overall goal of providing cross cultural, land-based education in Anishinaabe Culture. Tours available by appointment. Please contact marketing@shingwauku.org | 705-998-2496



THE SHINGWAUK RESIDENTIAL SCHOOLS CENTRE

Reclaiming Shingwauk Hall is the first major, permanent Residential School Survivor driven exhibition in a former Residential School building. The space presents over 110 years of history of the Shingwauk Indian Industrial Residential Schools. Reclaiming Shingwauk Hall embodies years of collaboration with the Children of Shingwauk Alumni Association, Residential School Survivors, and local First Nation communities.

Learn about the legacy of residential schools in Canada through historical tours and educational outreach programming on the former Shingwauk Residential School site. Tours can accommodate all education levels and are created to fit the needs of your group. Recommended for Grade 4 and up. For a guided tour contact the Shingwauk Residential Schools Centre at ShingwaukDG@algomau.ca | 705-949-2301 x 4623

DAYS OF RECOGNITION

NATIONAL INDIGENOUS PEOPLES DAY

June 21st

June 21, the summer solstice, is National Indigenous Peoples Day. This is a day for all Canadians to recognize and celebrate the heritage, diverse cultures and outstanding contributions of First Nations, Inuit and Métis peoples. Local events are held as a way to promote cross-multiculturalism both in Sault Ste. Marie and across Canada.

NATIONAL DAY FOR TRUTH AND RECONCILIATION

September 30th

Each year, September 30 marks the National Day for Truth and Reconciliation. This day honours the children who never returned home and Survivors of residential schools, as well as their families and communities. Join in various activities hosted in Baawating taking place on this day to commemorate the history and legacy of residential schools.



SACRED SITE: AGAWA BAY PICTOGRAPHS

No visit to Sault Ste. Marie would be complete without taking a day trip along the coastal shores of Lake Superior. Within the hour, you will find pristine beaches along the shores of Batchewana and Pancake Bay. Reward yourself with a legendary apple fritter from the Voyageur Lodge and Cookhouse before continuing north to the Agawa Rock Pictographs. Agawa Rock is one of the most known Pictograph sites in Canada, found within Lake Superior Provincial Park. The area is also one of the most visited Indigenous archaeological sites in Canada. The images visible today include canoes and animals such as moose, deer, bear and caribou. The most recognizable painting consisting of a spined-horned animal is said to be "Mishipeshu", the Great Lynx, the spirit of the water. Please respect and preserve the Pictographs. In doing so, visitors are asked to not to touch the images. On your way back to town, stop in at the Canadian Carver to shop a variety of crafts, furs, moccasins, pottery and more!



Agawa Bay Pictographs



POW WOW

Immerse yourself in traditional Indigenous culture during a local Pow Wow. Pow Wows are powerful Indigenous gatherings where you'll find multiple generations coming together to enjoy food, honour traditions, forge a sense of community, and practice spiritual healing. Bask in the joyful reclamation of traditional dances and songs, and sense the palpable pride of Indigenous dancers, drummers and singers as they embody the power of Pow Wow. Pow Wows are open to the public and are a wonderful opportunity to experience the richness of an Indigenous traditional gathering.



Visit us... Your Friends are already here!



PROUDLY BREWED IN SAULT STE. MARIE



50 Pim Street • Sault Ste. Marie, Ontario P6A 3G4 | 705.450.7468

northernsuperior.org



Your destination for **FUN & EXCITEMENT!**

Located in the heart of downtown Sault Ste Marie,
we invite you to enjoy a mix of exciting slots,
table games, electronic table games and more!

Experience full-service dining at the
Getaway Restaurant while catching the
game on our large screen TVs.

SIGN UP FOR MY CLUB & GET \$5 FREE PLAY!*

VISIT GUEST SERVICES FOR COMPLETE DETAILS ON OUR LOYALTY
PROGRAM OR WWW.MYCLUBREWARDS.CA *NEW MEMBERS ONLY.
YOU MUST BE 19 YEARS OF AGE OR OLDER TO ENTER THE GAMING FLOOR,
AND TO PARTICIPATE IN ANY PROMOTIONS OFFERED BY GATEWAY.

30 BAY STREET WEST, SAULT STE. MARIE, ON P6A 7A6

Play Smart
Knowledge you can bet on.

705-759-0100 ssmcasino.ca
@GatewayCasinosSaultSteMarie



CASINO OPEN
SUN-THUR, 9AM-2AM
FRI & SAT, 9AM-3AM

TABLE GAMES HOURS
WED-SUN, 5PM-1AM

GETAWAY RESTAURANT OPEN
THURS-SUN, 9:30AM-9PM
MON-WED, 11AM-9PM



EVENTS

Looking for things to do in the Soo? We have an event for that.

Sault Ste. Marie is a city packed full of events the year round. There is always something going on whether it be a collaborative creation of inspiring street-art, a classic car cruise through the heart of our downtown, a cultural celebration by our Indigenous communities, or a cross-country ski race over beautiful frozen lakes.

The best way to stay connected whether you are visiting or planning your visit is by heading to the Events page of our website:

www.saulttourism.com/events

Scan the QR code with the camera on
your phone and head straight there



MULTI-CULTURAL EVENTS

Join in the many celebrations that honour our history and celebrate our present diversity. Throughout the year, our Indigenous communities host Pow wows where all are welcome to join and celebrate Indigenous culture. Annually, in June, the Summer Moon Fest brings to life the creation of multi-cultural large-scale public art and live musical performances. In the summer, Pridefest events celebrate diversity and inclusion with the 2SLGBTQ+ community. The Fall Rendezvous festival recreates life in the early 1800s, with presentations and reenactments by local historical enthusiasts as well as Culture Days, a national celebration of arts and culture.



CULINARY EVENTS

You're never far from a celebration of food or drink in this city! Poutine and Ribfest happen in the summer – a great chance to enjoy this delicious food and try the latest sauces! We have two craft beer events, one in the spring, the Festival of Beer and in the fall, we have our own Oktoberfest with Northern Superior and OutSpoken running weekend long events!

Being a community that produces so much delicious Maple Syrup we of course have a festival for that too. Check out Hogan's Homestead 'Maple Weekend' in April!

ENTERTAINMENT EVENTS

Let us entertain you! We have some great venues that host a wide variety of musical acts, theatre productions, comedians and more throughout the year. Mozart at the Movies, the music of Tina Turner, Shania Twain, Johnny Cash, and in the fall a much anticipated theatre production of Priscilla Queen of the Desert. Throughout the summer months, enjoy live music on the waterfront at the Summer Concert Series under the iconic Roberta Bondar Pavilion. If visiting in the fall, be sure to check out the Algoma Fall Festival, a month long event in October celebrating excellence in the visual and performing arts.



COMMUNITY EVENTS

We have many great and recognizable events, some dating back 60 years, and always well attended by locals and visitors alike.

The Rotaryfest in the summer is a three-day event featuring fun and games for the whole family and includes Rib Fest, live music and our hugely popular Rotary Fest Parade. The Queen Street Cruise is a classic and well-loved event where vintage car enthusiasts gather to 'cruise' through our downtown. Bushplane Days is one of the staple events of fall. Held in the iconic Canadian Bushplane Heritage Centre, this family event full of fun and games is a great reason to visit the Soo!



In winter lookout out for Bon Soo which has celebrated 60 years of winter family fun in our community. Bon Soo celebrates all things winter with a variety of fun events throughout the city over 10 days each February.





HOLIDAY SEASON EVENTS

Starting in the middle of fall our city comes together to celebrate the Holiday Season. We host a number of multicultural events during this time including; craft shows, festive musical events, downtown shopping nights, Christmas Tree lightings, and a fun and always well supported Santa Claus parade.



SPORTING EVENTS

Sault Ste. Marie loves its sports; whether it's cheering on one of the local hockey teams, or getting outside and enjoying our world-class outdoor adventures.

The OHL's Soo Greyhounds provides weekly entertainment during the hockey season, where the atmosphere at the GFL Gardens always makes for a grand occasion. The Soo also hosts multiple seasonal events like Runway Park Snowmobile Drag Race Series in the winter or the Coppa Giovanni Soccer Tournament in July. Do you love to race? Check out the Beaver Freezer Marathon in March. This is an event for the toughest; cross country ski, fat bike or run up to 42km in the beautiful Hiawatha and Algoma Highlands. In the spring, you can test your marathon endurance and supporting local charities at the Community Strong Festival.



Your Friendly Neighbourhood Pharmacy

Locally owned & operated for over 65 years
With professional and exceptional service you will always have a friend at I.D.A. Drug Marts



I.D.A. flyers
Sales & new items available for purchase
Visit: drugmarts.ca



Walk-In Clinic Registration
Services include: TB Skin Test, Flu Shot, Immunizations
& injections, Swab samples, and much more

**Your Health
Is OUR Priority**

FREE DELIVERY ON
PRESCRIPTIONS & STORE FRONT ITEMS

Pine Shores I.D.A. Drug Mart
Goulais River, ON
705-649-6393

East Street Drug Mart
170 East Street
705-450-3784

Market Mall Drug Mart
275 Second Line West
705-254-7329

WALK-IN CLINIC AVAILABLE AT ALL LOCATIONS

Queenstown Drug Mart
302 Queen St. East
705-949-7331

Wellington Square Drug Mart
625 Trunk Road
705-945-8088

Urban Square Drug Mart
197 Trunk Road
705-759-4818

Visit drugmarts.ca to learn more about I.D.A. DRUG MARTS Clinic Services

Sweet Greetings

Gifts | Décor | Gourmet
Exclusively at I.D.A.

A unique gift shop that offers modern, and fresh gift wear and home decor featuring Canadian and local products from the Algoma region.



At Sweet Greetings you can create a custom basket for a loved one or shop for yourself from our hand picked curated collection. Every location has high quality products for everyone.



Beautiful gift options for every occasion.

Sweet Greetings is located inside all 5 I.D.A. DRUG MART LOCATIONS

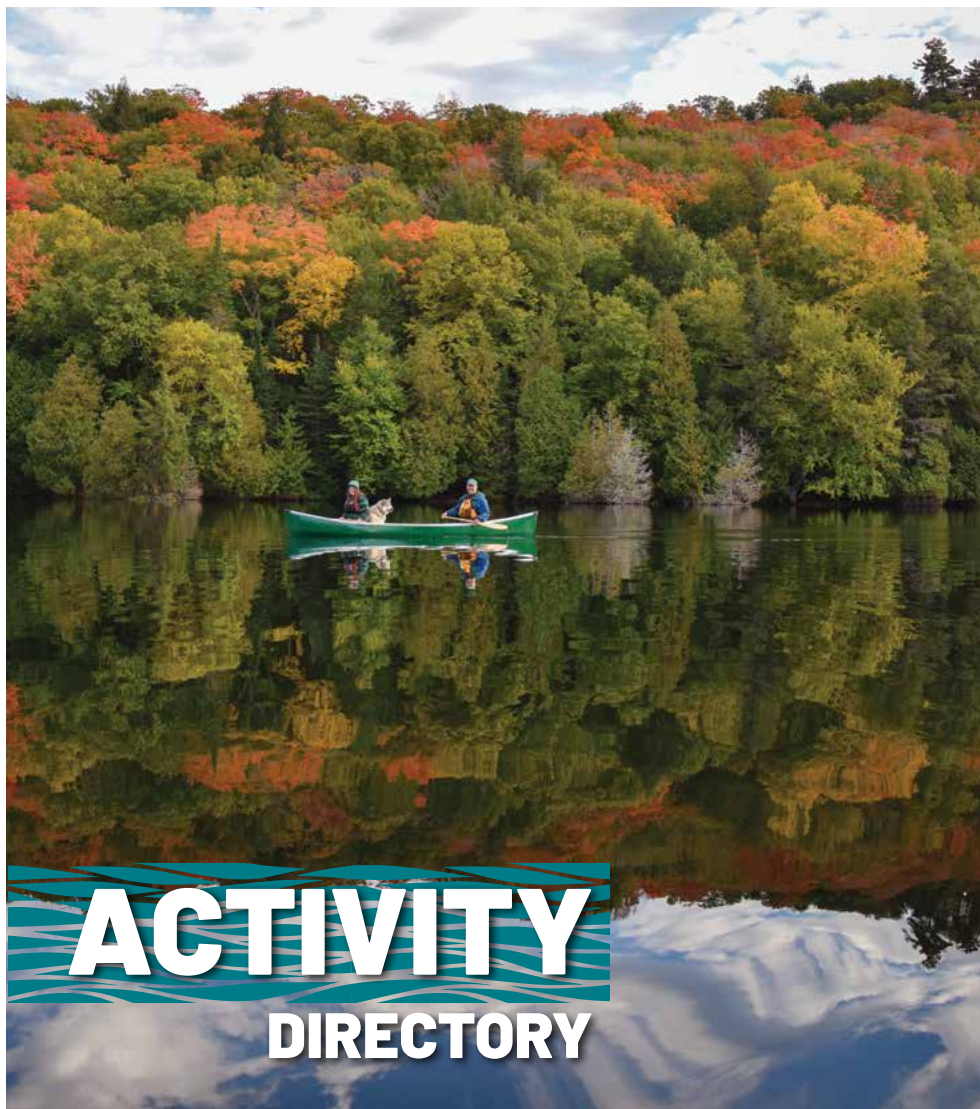
Queenstown Drug Mart
302 Queen St. East
705-949-7331

Wellington Square Drug Mart
625 Trunk Road
705-945-8088

Sault Area Hospital Gift Shop
750 Great Northern Road
705-759-3434 ext. 5362

Urban Square Drug Mart
197 Trunk Road
705-759-4818

Market Mall Drug Mart
275 Second Line West
705-256-1550



ART GALLERIES & EXHIBITIONS

ART GALLERY OF ALGOMA

705-949-9067 | www.artgalleryofalgoma.com

OUTDOOR MURAL GALLERY

800-461-6020 | www.saulttourism.com

RECLAIMING SHINGWAUK HALL

705-949-2301 x 4623
www.reclaimingshingwaukhall.ca

THE ART HUB AT SPRING

705-542-2301

BEACHES

BACHEWANA BAY PROVINCIAL PARK

705-882-2209
www.ontarioparks.com/park/batchawanabay

HARMONY BEACH

25 Minutes north of Sault Ste. Marie on HWY 17N

LAKE SUPERIOR PROVINCIAL PARK

705-856-2286
www.ontarioparks.com/park/lakesuperior



BEACHES CONT'D

PANCAKE BAY PROVINCIAL PARK

705-882-2209
www.ontarioparks.com/park/pancakebay

POINT DES CHENES PARK

705-759-2500

BIRD WATCHING

SAULT NATURALISTS

705-254-8796 | www.saultnaturalists.org

SAULT STE. MARIE REGION CONSERVATION AUTHORITY

705-946-8530 | www.ssmrca.ca

CAMPING

BLUEBERRY HILL MOTEL & CAMPGROUND

705-649-5631 | www.onblueberryhill.com

GLENVIEW COTTAGES & CAMPGROUND

705-759-3436 | www.glenviewcottages.com

KOA CAMPGROUND

800-562-0847
www.koa.com/campgrounds/sault-ste-marie/

OJIBWAY PARK

705-248-1520 | www.ojibwaypark.ca

PANCAKE BAY PROVINCIAL PARK

705-882-2209
www.ontarioparks.com/park/pancakebay

CASINO

GATEWAY CASINO SAULT STE. MARIE

705-759-0100
www.saultstemarie.gatewaycasinos.com

CYCLING

ALGOMA BICYCLE | 705-759-3443
www.facebook.com/algoma.bicycle

BELLEVUE VALLEY | 705-649-2880
www.trailforks.com/region/bellevue-valley-d

CRIMSON RIDGE | 705-254-4653
www.golfcrimsonridge.com

DUKE OF WINDSOR | 705-942-1610
www.facebook.com/dukeofwindsorsport

ESPOSITO PUMP TRACK | 705-759-2500

HIAWATHA HIGHLANDS AND KINSMEN PARK
 705-256-7258 | www.hiawathahighlands.com

JOHN ROSEWELL HUB TRAIL | www.hubtrail.com

SAULT CYCLING CLUB (Maps and Routes)
 705-971-8904 | www.saultcyclingclub.ca

STOKELY CREEK

705-649-3421 | www.stokelycreek.com

VÉLORUTION

705-253-9388 | www.velorution.ca

FARMS & MARKETS

ALGOMA'S FARMERS MARKET

www.algomafarmersmarket.ca

GILBERTSON'S MAPLE PRODUCTS

705-246-2066 | www.gilbertsonsmple.com

HOGAN'S HOMESTEAD

705-246-7673
www.hoganshomestead.ca

MEADOWVIEW ALPACA FARM

705-785-3389
www.meadowviewalpacaafarm.com

MILL MARKET | www.millmarketssm.ca

MOCKINGBIRD HILL FARM | 705-253-4712
www.mockingbirdhillfarm.ca

FARMS & MARKETS CONT'D

NEAL'S COUNTRY FARM & MARKET

705-206-1450 | www.facebook.com/nealscountryfarmandmarket

STOKELY CREEK ALPACA RANCH

249-525-7999
www.stokely-creek-alpaca-ranch.business.site

THOMSON FARMS CIDER & WINERY

705-779-3394 | www.thomsonfarms.ca

FAT BIKING

CRIMSON RIDGE (GROOMED)

705-254-4653 | www.golfcrimsonridge.com

FORT CREEK TRAILS | 705-946-8530

www.ssmrca.ca/conservation-areas/fort-creek-conservation-area/

HIAWATHA HIGHLANDS (GROOMED)

705-256-7258 | www.hiawathahighlands.com

HUB TRAIL

www.hubtrail.com

SAULT GOLF CLUB | 705-759-5133

www.saultgolfclub.ca

SAULT STE. MARIE CANAL NATIONAL HISTORIC SITE

705-941-6205
www.parkscanada.ca/sault

WHITEFISH ISLAND | 705-941-6205

www.batchewana.ca/communities/whitefish-island/

FISHING GUIDES

ANGLING ALGOMA

705-943-5286 | www.anglingalgoma.com

JOHN GIULIANI'S FISHING ADVENTURE

705-971-3293 | www.stmarysrapidsguiding.com

REDWOOD SPORT FISHING

705-941-8272 | www.redwoodcharters.net

SUPERIOR NORTH CHARTERS

705-255-0389 | www.superiornorthcharters.ca

TYLER DUNN GUIDING

705-206-0984 | www.tylerdunnguiding.ca

GUIDED TOURS

ALGOMA SCENIC FLIGHTS/ SAULT ACADEMY OF FLIGHT

705-779-3999 | www.saultacademyofflight.ca

BLAQ BEAR ECO ADVENTURE & CULINARY TOURS

705-649-2235 | www.blaqbear.ca

DO THE SOO TOURS

905-409-8557 | www.dothesoo.com

FOREST THE CANOE

705-730-3457 | www.forestthecanoe.ca

GREAT LAKES MASKWA AVIATION

705-542-4302 | glma.ca/charters

LAKE SUPERIOR WATERSHED CONSERVANCY

705-946-0044 | www.superiorconservancy.org

RED PINE TOURS

705-297-1504 | www.redpinetourscanada.com

SHAIRE AIRLINES

249-356-4211 | www.flyshire.com

SHINGWAUK RESIDENTIAL SCHOOLS CENTRE

705-949-2301 ext. 4623
www.algomau.ca/research/shingwauk-residential-schools-centre/

THRIVE TOURS

705-862-1558 | www.thrivetours.ca



HOCKEY

SOO GREYHOUNDS

705-253-5976 | www.soogreyhounds.com

SOO THUNDERBIRDS

705-256-3606 | www.soothunderbirds.com

LOCAL BREWERIES AND WINERIES

NORTHERN SUPERIOR BREWING CO.

705-450-7468 | www.northernsuperior.org

OUTSPOKEN BREWERY

705-253-2828 | www.outspokenbrewing.com



THOMSON FARMS CIDER & WINERY

705-779-3394 | www.thomsonfarms.ca

MARINAS

BELLEVUE MARINA

705-759-5310 | www.saultstemarie.ca

HILTON BEACH MARINA

705-246-2291 | www.hiltonbeach.com

RICHARDS LANDING MARINA

705-246-0254 | www.stjosephtownship.com

ROBERTA BONDAR MARINA

705-759-5310 | www.saultstemarie.ca

MUSEUMS & EXHIBITS

CANADIAN BUSHPLANE HERITAGE CENTRE

705-945-6242 | www.bushplane.com

ENTOMICA INSECTARIUM

705-297-5777 | www.entomica.com

ERMATINGER CLERGUE NATIONAL HISTORIC SITE

705-759-5443 | www.ecnhs.com

SAULT STE. MARIE MUSEUM

705-759-7278 | www.saultmuseum.ca

NATIONAL HISTORIC SITES

ERMATINGER CLERGUE NATIONAL HISTORIC SITE

705-759-5443 | www.ecnhs.com

FORT ST. JOSEPH NATIONAL HISTORIC SITE

705-246-2664
www.pc.gc.ca/en/lhn-nhs/on/stjoseph/visit

SAULT STE. MARIE CANAL NATIONAL HISTORIC SITE

705-941-6262
www.parkscanada.ca/sault

THE FORMER SHINGWAUK INDIAN RESIDENTIAL SCHOOL

705-949-2301 x 4623
www.algomau.ca/special-mission/

WHITEFISH ISLAND

705-941-6205 | www.parkscanada.ca/sault



OUTFITTERS

ATMOSPHERE | 705-945-0900

www.thestationmall.com/stores/atmosphere/

BUD ROBINSON MOTORSPORTS

705-256-5326 | www.robinsonmotorsports.ca

GREAT LAKES OUTFITTERS

705-253-2361 | www.greatlakesoutfitters.ca

HIWAY VARIETY OUTFITTERS

705-450-5888 | www.hiwayvariety.com

NORTHSHORE SPORTS AND AUTO

705-942-9006 | www.northshoresports.ca

RIVERCITY MOTORSPORTS

705-253-2750 | www.rivercitysault.com

SUPERIOR EAST BOARD SHOP

705-777-1589 | www.superioreastboardshop.com

SUPERIOR MARINE

705-253-7828 | www.superiormarine.on.ca

THE OUTFITTERS

705-759-9090 | www.outfitterssm.ca

THE TRADING POST

705-759-4518 | www.trading-post.ca

VÉLORUTION

705-253-9388 | www.velorution.ca

PARKS & PLAYGROUNDS

BELLEVUE PARK & SPLASH PAD

705-759-5310 | www.saultstemarie.ca

CLERGUE PARK

705-759-5310 | www.saultstemarie.ca



KINSMEN PARK/ CRYSTAL FALLS

705-759-5310 | www.saultstemarie.ca

POINT DES CHENES PARK

705-759-5310 | www.saultstemarie.ca

RACE TRACKS

LAIRD INTERNATIONAL RACEWAY | 705-759-5149

www.myracepass.com/tracks/1970

RUNWAY PARK

705-206-7322 | www.runwaypark.net

RENTALS

FOREST THE CANOE

705-730-3457 | www.forestthecanoe.ca

GREAT LAKES OUTFITTERS

705-253-2361 | www.greatlakesoutfitters.ca

HIAWATHA HIGHLANDS SKI & SNOWSHOE RENTALS

705-256-7258 | www.hiawathahighlands.com

RIVERCITY MOTORSPORTS

705-253-2750 | www.rivercitysault.com

ROBERTA BONDAR MARINA- BIKE RENTALS (SEASONAL)

705-759-5430 | www.saultstemarie.ca

SUPERIOR EAST BOARD SHOP

705-777-1589 | www.facebook.com/SuperiorEastBoardShop

SUPERIOR RENTALS

705-206-6469 | www.superior-rentals.ca

SSM CANAL NATIONAL HISTORIC SITE FAT BIKE RENTALS (SEASONAL)

705-941-6262

www.parkscanada.ca/sault

WATERFRONT ADVENTURE CENTRE

705-759-2554 ext. 2920

www.saultcougars.ca/waterfrontadventurecentre



SALONS & SPAS

AZURE SALON & SPA

705-450-6533 | www.azuremedispa.com

GREENHOUSE SPA

705-256-6461 | www.greenhousespa.ca

MANE STREET SALON AND SPA

705-253-4988 | www.manestreetco.com

THE TEN SPOT

705-575-7768 | www.thetenspot.com/saultstemarie/

SELF GUIDED TOUR RESOURCES

GREAT LAKES WATERFRONT TRAIL

416-943-8080 | www.waterfronttrail.org/places/communities/sault-ste-marie/

GROUP OF SEVEN

800-263-2546 | www.momentsofalgoma.ca

LAKE SUPERIOR COASTAL DRIVE

888-668-7575

www.ontarioparks.com/parksblog/lake-superior-shoreline-tour

NORTH CHANNEL MARINE TOURISM COUNCIL

www.thenorthchannel.ca

ON THIS SPOT APP | 800-461-6020

www.onthisspot.ca/cities/saultstemarie

ONTARIO BY BIKE | 800-461-6020

www.ontariobybike.ca/business-directory/city-of-sault-ste-marie/

ONTARIO TRAVEL INFORMATION CENTRE

705-945-6941

SAULT CYCLING CLUB

705-971-8904 | www.saultcyclingclub.ca

SAULT STE. MARIE MURAL TOUR

800-461-6020 | www.saulttourism.com

SAULT TRAILBLAZERS SNOWMOBILE CLUB

www.ssmtrailblazers.ca

VOYAGEUR TRAIL ASSOCIATION

877-393-4003 | www.voyageurtrail.ca

SHOPPING

DOWNTOWN SAULT STE. MARIE

705-942-2919 | www.saultdowntown.com

FRONTIER VILLAGE

705-759-4518 | www.trading-post.ca

SAULT STE. MARIE SOUVENIRS- ERMATINGER CLERGUE NATIONAL HISTORIC SITE

705-541-7023 | www.ecnhs.com

THE CAMBRIAN MALL

705-759-4900 | www.cambrianmall.ca

THE STATION MALL

705-946-7239 | www.thestationmall.com

SKIING

BELLEVUE VALLEY LODGE

705-649-2880 | www.bellevuevalleylodge.ca

CRIMSON RIDGE

705-254-4653 | www.crimsonridge.com

HIAWATHA HIGHLANDS

705-256-7258 | www.hiawathahighlands.com

SEARCHMONT RESORT

705-781-2340 | www.searchmont.com

STOKELY CREEK LODGE

705-649-3421 | www.stokelycreek.com



SKATING OUTDOORS

ART JENNINGS OVAL

705-759-6605 | www.saultstemarie.ca

CLERGUE PARK SKATE TRAIL705-759-6605 | www.saultstemarie.ca**CRIMSON RIDGE SKATE TRAIL**705-254-4653 | www.crimsonridge.com**THE RINK AT THE MACHINE SHOP**705-759-9090 | www.themachineshopinc.ca**SNOWMOBILING****ALGOMA COUNTRY**

800-263-2546

www.algomacountry.com/sledalgoma**ALGOMA SNO-PLAN AFFILIATION**705-356-5757 | www.algomatrails.com**ONTARIO FEDERATION OF SNOWMOBILE CLUBS**705-739-7669 | www.ofsc.on.ca**SAULT TRAILBLAZERS SNOWMOBILE CLUB**www.ssmtrailblazers.ca**SNOWSHOEING****CRIMSON RIDGE**705-254-4653 | www.crimsonridge.com**FORT CREEK CONSERVATION AREA**705-946-8530 | www.ssmrca.ca**HIAWATHA HIGHLANDS**705-256-7258 | www.hiawathahighlands.com**SAULT GOLF CLUB**705-759-5133 | www.saultgolfclub.ca**ST. KATARI OUTDOOR LEARNING CENTRE**

705-945-5668

www.hscdsb.on.ca/stkaterioutdoorlearningcentre**STOKELY CREEK**705-649-3421 | www.stokelycreek.com**SPORTS & RECREATION****ALGOMA ROD AND GUN CLUB**705-253-1849 | www.argc.ca**BELLEVUE PARK SPLASHPAD**705-541-7010 | www.saultstemarie.ca**COMMUNITY FIRST CURLING CENTRE**705-254-6174 | www.soocurlers.com**CRIMSON RIDGE GOLF COURSE**705-254-4653 | www.crimsonridge.com**ESPOSITO PUMP TRACK**705-759-5310 | www.saultstemarie.ca**GFL MEMORIAL GARDENS**705-759-5251 | www.gflgardens.ca**HIDDEN HILLS STABLES EQUESTRIAN CENTRE**705-943-6135 | www.hiddenhillstables.ca**JOHN RHODES COMMUNITY CENTRE**705-759-5419 | www.saultstemarie.ca**KIWANIS CLUB OF LAKESHORE DISC GOLF COURSE**www.saultdiscgolf.ca**NORTHCREST BOWLING LANES**705-256-7441 | www.northcrestbowling.com**NORTHERN COMMUNITY CENTRE**705-759-25001 | www.saultstemarie.ca**OUTFITTERS CLIMBING WALL**705-759-9090 | www.outfitterssm.ca**PICKLEBALL** | www.soopickleball.com**POINTE DES CHENES DISC GOLF COURSE**www.saultdiscgolf.ca**QUEEN ELIZABETH SKATE PARK**705-759-6605 | www.saultstemarie.ca**ROLLERS BOCCIE**705-942-5556 | www.rollersbocce.ca**ROOT RIVER GOLF COURSE**705-759-8776 | www.rootriverco.com**SOO BLASTERS**705-450-0095 | www.soooblaster.com**SAULT GOLF CLUB**705-759-5133 | www.saultgolfclub.ca**SILVER CREEK GOLF COURSE**705-942-2080 | www.golfsilvercreek.com**SUPERIOR EAST BOARD SHOP**705-777-1589 | www.superioreastboardshop.com**THE RINK (SEASONAL)**705-759-9090 | www.canaldistrictssm.ca**WATERFRONT ADVENTURE CENTRE**705-759-2554 ext. 2920 | www.saultcougars.ca/waterfrontadventurecentre**THEATRES****ALGOMA CONSERVATORY OF MUSIC**

705-253-4373 x 6400

www.algomaconservatory.com**ALGOMA REPERTORY THEATRE**705-943-9519 | www.artinssm.com**GALAXY CINEMA** | 705-949-7949www.cineplex.com/Theatre/galaxy-cinemas-sault-ste-marie**SAULT COMMUNITY THEATRE**705-945-7299 | www.saultctc.ca**THE GRAND THEATRE**705-575-5687 | www.facebook.com/TheGrandTheatreSSM/**WALKING & HIKING TRAILS****ALGOMA HIGHLANDS CONSERVANCY-ROBERTSONS CLIFFS**

705-649-5751

www.algomahighlandsconservancy.com**BATCHEWANA BAY PROVINCIAL PARK**

705-882-2209

www.ontarioparks.com/park/batchawanabay**BELLEVUE PARK**705-759-5310 | www.saultstemarie.ca**CRIMSON RIDGE**705-254-4653 | www.crimsonridge.com**FORT CREEK CONSERVATION AREA**705-946-8530 | www.ssmrca.ca**HIAWATHA HIGHLANDS AND KINSMEN PARK**705-256-7258 | www.hiawathahighlands.com**JOHN ROSEWELL HUB TRAIL**www.hubtrail.com**PANCAKE BAY PROVINCIAL PARK**705-882-2209 | www.ontarioparks.com/park/pancakebay**POINT DES CHENES PARK**705-759-2500 | www.saultstemarie.ca**SAULT STE. MARIE CANAL NATIONAL HISTORIC SITE**705-941-6262 | www.parkscanada.ca/sault**WHITEFISH ISLAND** | 705-759-0914www.batchewana.ca/communities/whitefish-island/**LOOKING FOR A LOCAL RESTAURANT?**

For a complete list of
restaurants and dining
please visit our website



a superior view

aboard the **MISSMARIE**



TOURS DAILY – 10AM & 1PM

• Sault Ste. Marie Ontario • Michigan Waterfront • Historical Canal Tour

Sault Locks tours presents the Miss Marie and a spectacular day or evening tour experience. The tour consists of a boat cruise every day from the beginning of May, all the way until mid October! The "Miss Marie" is a 100 person capacity vessel, please book soon, spots fill fast.

**SNACKS
AND
BEVERAGES
AVAILABLE
ON BOARD**

**PRIVATE CHARTERS
AVAILABLE**
GROUP PACKAGE
PRICING AVAILABLE
20 OR MORE PASSENGERS

MISSMARIE  SAULT STE MARIE

SAULTLOCKTOURS.CA  
(705) 989-4985



ADVENTURE STARTS HERE



WATERFRONT ADVENTURE CENTRE (WAC)

Our Waterfront Adventure Centre, situated along the picturesque waters of the St. Mary's River in the heart of the Great Lakes, is home to a student and community inclusive space that takes advantage of outdoor recreational facilities. The Centre features activities from watercraft rentals, such as canoes, kayaks and stand-up paddleboards, to court rentals for tennis, beach volleyball and pickle ball! There is a 2,500 square foot main building and a 2,460 square foot boathouse. During your visit you can enjoy a snack or refreshing beverage on our licensed patio with the best waterfront view in the Sault! Visit us at saultcollege.ca/waterfront

18 MCPHAIL AVENUE • SAULT STE. MARIE, ON • 705.759.2554 EXT. 2920



ALL UNDER ONE ROOF

SOOBLASTER
EAT DRINK PLAY

HOME AWAY FROM HOME
Walking Distance to Agawa Canyon Tour Train, Gateway & Station Mall

- ✓ Medical Rate
- ✓ Covered Parking
- ✓ Free Breakfast
- ✓ Banquet & Conference Rooms
- ✓ Fitness Center
- ✓ Onsite Restaurant
- ✓ Extended stay available (kitchenette rooms)

BOOK NOW

WWW.DAYSINNSSM.COM

CONTACT US DIRECT FOR THE BEST RATES AVAILABLE

866-759-1400
332 BAY STREET SAULT STE. MARIE

Days Inn & Suites

THE TAJ INDIAN CUISINE

tripadvisor
RANKED #1

THE TASTE OF
Indian & Hakka

DINE IN TAKE OUT

DELICIOUS DINING EXPERIENCE
Enjoy the Exclusive
THE TAJ CHEF TABLE
Tuesday & Thursday

For more info & reservations, call
705 253 4444
www.thetajindiancuisine.ca

420 Great Northern Road

All Type of Catering

Quality & Professional Catering

Catering Services for Various Events

Birthday Wedding Party Corporate Events Anniversary

If you are planning an event such as a wedding reception or business luncheon, deciding what food to serve is an important decision. By choosing to use a catering company, you can take some pressure off the planning and leave more time to enjoy your guests.

For Any Inquiry: info@thetajindiancuisine.ca
www.thetajindiancuisine.ca

BEAVERTAILS
• SINCE 1978 •

Visit us at:
BeaverTails Sault Ste. Marie
The Roberta Bondar Park and Tent Pavilion
65 Foster Drive
Sault Ste. Marie, ON P6A 5N1

705-759-5075
www.beavertails.com

Follow us on Facebook:

  BEAVERTAILS SAULT STE. MARIE

  BEAVERTAILS MOBILE SAULT STE. MARIE

Holiday Inn Express
AN IHG® HOTEL
SAULT STE. MARIE ONTARIO

PACKED WITH PERSONALITY
320 Bay Street, Sault Ste. Marie, ON
(705) 759-8200 | 1-800-HOLIDAY
hiexpress.com/saulton

• Downtown, steps from Station Mall & across from GFL Memorial Gardens.
• Complimentary hot, fresh breakfast bar.
• Self-serve laundry, indoor pool, whirlpool, sauna & fitness rooms.
• Fridge, microwave & Keurig coffee station in all rooms & suites.

IHG® Rewards Club



BW Premier
COLLECTION

WATERTOWER INN



Offering a variety of rooms and suites.

Unique places to eat and entertain featuring restaurant and pub menus.

Expansive recreational facilities including 4 pools, indoor and outdoor whirlpools, sauna and fitness.

Outdoor courtyards with waterfalls and waterways.

Trailhead information... plan your Lake Superior outdoor excursions.

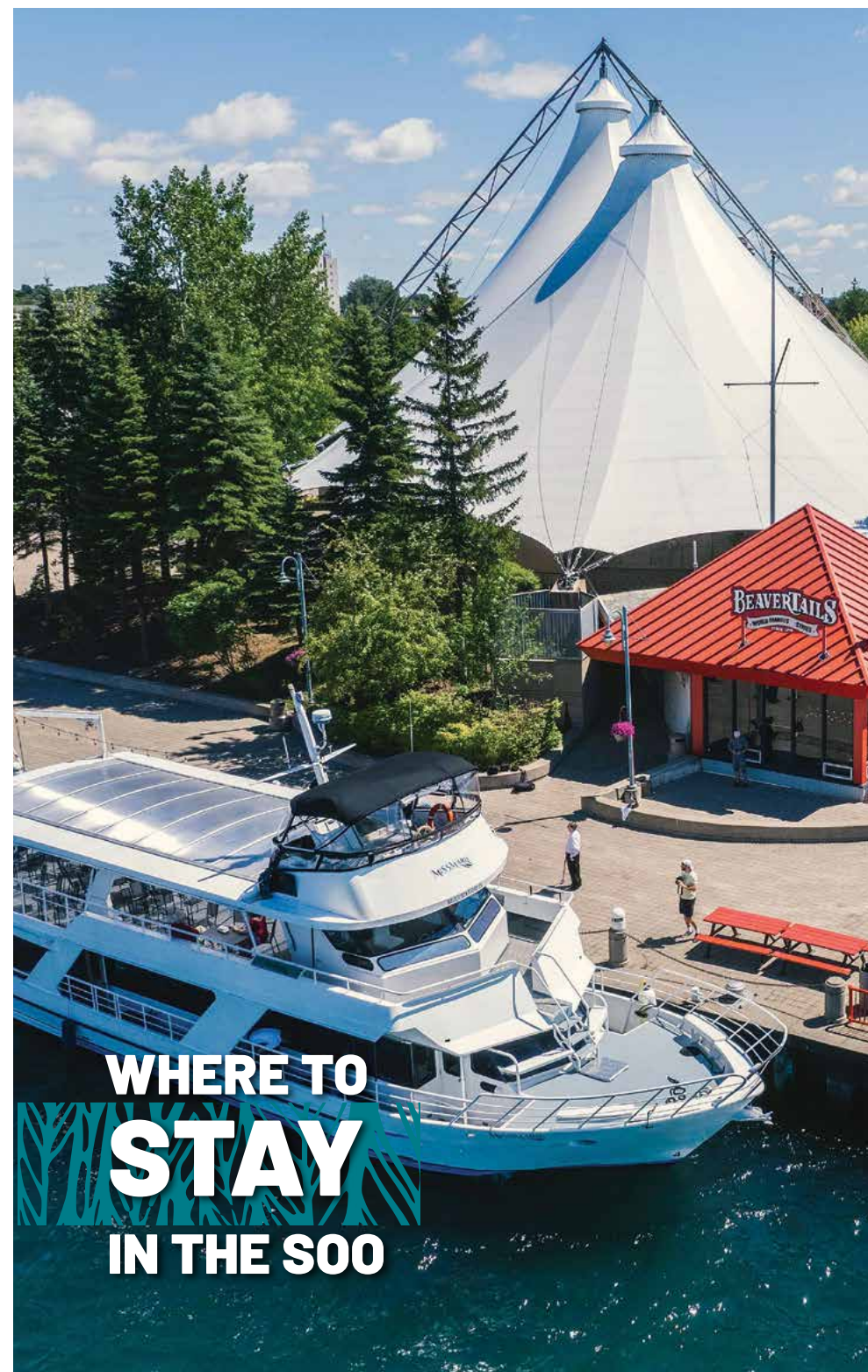
And check out our video wall and the McGuffin gallery!

Book direct for best rates and packages.

Talk to our reception team: **705 949 8111** | Toll Free **800 461 0800**

Located at the crossroads of Sault Ste. Marie, under the landmark water tower.

See all we have to enjoy at www.WaterTowerInn.com



HOTELS - SAULT STE. MARIE

Complimentary
Hot BreakfastHot Tub or
SaunaPets
AllowedSafe
Travels
StampRestaurant/
Lounge

Pool



Accessible

COMFORT INN by Choice Hotels
333 Great Northern Rd. | 705-759-8000
www.saultstemariecomfortinn.com



MICROTEL INN & SUITES by Wyndham
724 Great Northern Rd. | 705-910-0180
www.microtelinn.com



DAYS INN & SUITES by Wyndham
332 Bay St. | 705-759-1400
www.daysinnssm.com



QUALITY INN & SUITES Bay Front by Choice Hotels
180 Bay St. | 705-945-9264
www.qualityinnssm.com



DELTA HOTELS
Sault Ste. Marie Waterfront by Marriott
208 St Mary's River Dr. | 705-949-0611
www.marriott.com/yamds



QUATTRO HOTEL AND CONFERENCE CENTRE
An Acent Collection by Choice Hotels
229 Great Northern Rd. | 705-942-2500
www.quattrossm.com



FAIRFIELD INN & SUITES by Marriott
633 Great Northern Rd. | 705-253-7378
www.marriott.com/yamfi



SLEEP INN by Choice Hotels
727 Bay St. | 705-253-7533
www.sleepinnssmarie.ca



HOLIDAY INN EXPRESS an IHG Hotel
320 Bay St. | 705-759-8200
www.hiexpress.com/saulton



SUPER 8 by Wyndham
184 Great Northern Rd. | 705-910-2585
www.super8.com



HOWARD JOHNSON by Wyndham
503 Trunk Rd. | 705-302-1275
www.wyndhamhotels.com/hojo



WATER TOWER INN
A Premier Collection by Best Western
360 Great Northern Rd. | 705-949-8111
www.watertowerinn.com



MOTELS - SAULT STE. MARIE AND AREA

ADAMS MOTEL
647 Great Northern Rd. | 705-254-4345

ALGOMA CABINS & MOTEL
1713 Queen St. E. | 705-256-8681
www.algomacabins.com

ALGONQUIN
864 Queen St. E. | 705-253-2311

AMBASSADOR MOTEL
1275 Great Northern Rd. | 705-759-6199
www.ambassadorsmotel.com

CATALINA MOTEL
259 Great Northern Rd. | 705-945-9260
www.catalinamotel.com

HOLIDAY MOTEL
435 Trunk Rd. | 705-759-8608

NORTHERN MOTEL
1547 Trunk Rd. | 705-759-2316

NORTHLANDER MOTEL
243 Great Northern Rd. | 705-450-0707

PINE GROVE MOTEL
1515 Trunk Rd. | 705-759-1202

SATELITE MOTEL
248 Great Northern Rd. | 705-759-2897

SKYLINE MOTEL
232 Great Northern Rd. | 705-942-1240

SUPER NIGHTS INN
1587 Trunk Rd. | 705-949-7777

TRUNK ROAD MOTEL
759 Trunk Rd. | 705-946-1933
www.trunkroadmotel.com

CAMPGROUNDS, LODGES AND BED & BREAKFAST

BELLEVUE VALLEY LODGE
RR #1 Goulais River, ON | 705-649-2880
www.bellevuevalleylodge.ca

GLENVIEW COTTAGES & CAMPGROUND
2611 Great Northern Rd. | 705-759-3436
www.glenviewcottages.com

KOA HOLIDAY CAMPGROUND
501 Fifth Line E. | 705-759-2344
www.koassm.com

MOUNTAINVIEW LODGE
4280 Hwy 556, Searchmont, ON
705-781-3329
www.mountainviewlodge.ca

SEARCHMONT RESORT
103 Searchmont Resort Rd., Searchmont, ON
705-781-2340
www.searchmont.com

STOKELY CREEK LODGE
194 Pickard Rd., Goulais River, ON
705-649-3421
www.stokelycreek.com

Scan this QR code to see more
accommodations in Sault Ste. Marie.



Disclaimer: The information listed above is provided by the accommodations and while we make every reasonable effort to ensure that the information provided is accurate, we make no representations, warranties or guarantees of any kind, express or implied, regarding the completeness, accuracy, reliability or satisfactory quality of each property.





**Comfort[™]
INN**
by CHOICE HOTELS

**COMFORT INN
SAULT STE MARIE**

333 Great Northern Road
Sault Ste Marie, ON | P6B 4Z8
T: 705-759-8000
1-866-529-1019

Located in uptown Sault Ste Marie, we're surrounded by great restaurants & shopping. Your stay includes our wonderful breakfast, WIFI, fridge/microwave in every room. Pet Friendly!

www.saultstemariecomfortinn.com



**184 Great Northern Rd.
Sault Ste. Marie, ON**
705-254-6441
1-866-551-5904

- Breakfast
- FREE WIFI
- Pet Friendly Rooms
- Corporate Long Term Stay Rates
- Guest Laundry
- Newly Updated Rooms & Lobby

frontdesk@saultsuper8.ca
www.super8.com
All Super 8 hotels are independently owned and operated



**724 Great Northern Rd.
Sault Ste. Marie, ON**
705-450-2423
1-855-232-1325

- Breakfast
- Guest Laundry
- Fitness Centre
- Full HD Channels
- FREE WIFI
- Corporate & Medical Rates

frontdesk@microtelinnsm.ca
www.microtelinn.com
Independently owned and operated

A family of Hotels providing Great Value at a great price.

Contact Hotels Directly for COVID-19 Policies



Certificate of Excellence 2021 Winner for Super & Microtel

THE BREAKFAST PIG

BADASS EATERY



**YOU HAVEN'T REALLY EXPERIENCED
THE SOO WITHOUT A VISIT TO THE PIG.**



**LOCALLY OWNED,
LOCALLY SOURCED AND
ALWAYS CRAFTED TO
BLOW YOUR MIND**

 **@THEBREAKFASTPIGBADASSEATERY**

 **@THEBREAKFASTPIG**



265 BRUCE ST SAULT STE. MARIE, ON 705.450.6911



TOURIST INFORMATION

Ontario Travel Information Centre

261 Queen St W,
Sault Ste. Marie, ON
P6A 1A3

(705) 945-6941

Sault Ste. Marie

www.saulttourism.com
www.welcometossm.com

1-800-461-6020

Downtown Association

www.saultdowntown.com

(705) 942-2919



 OnThisSpot

Sault Ste Marie
History Walking Tour App



Self-guided walking tours
that delve deep into the Soo's
fascinating history.



Hundreds of then and now
photos so you can compare
past and present.

Download the app at www.OnThisSpot.ca

 DOWNTOWN
ASSOCIATION

 SAULT
STE. MARIE

 Sault Ste. Marie
Museum



CITY OVERVIEW

MAP IS NOT TO SCALE, DISTANCES GREATER THAN SHOWN



CITY MAP LEGEND

- TOURIST INFORMATION
 - CIVIC CENTRE
 - CITY POLICE
 - ONTARIO PROVINCIAL POLICE
 - HOSPITAL
 - AIRPORT
 - UNIVERSITY/COLLEGE
 - CITY TRANSIT
 - BUS STATION
 - POST OFFICE
 - CHAMBER OF COMMERCE
 - DOWNTOWN PLAZA
- LIBRARY
 - SSM COMMUNITY THEATRE
 - SHOPPING
 - GOLF
 - DISC GOLF
 - SWIMMING POOL
 - MARINA
 - BOAT LAUNCH
 - SOCCER FIELD
 - BASEBALL FIELD
 - SKATE PARK
 - PUMP TRACK
 - ICE SKATE
- ICE SKATE
 - KAYAK DOCK
 - SNOWMOBILE STAGING AREA
 - PARK
 - CAMPGROUND
 - DUMP STATION
 - ONE-WAY STREET
 - TWO-WAY STREET
 - HIKING TRAIL
 - RAILWAY
 - HUB TRAIL

ATTRACTIONS

- 1 AGAWA CANYON TOUR TRAIN
 - 2 ART GALLERY OF ALGOMA
 - 3 CANADIAN BUSHPLANE HERITAGE CENTRE
 - 4 CANAL DISTRICT
 - 5 ENTOMICA
 - 6 ERMATINGER CLERGUE NATIONAL HISTORIC SITE
 - 7 GATEWAY CASINO SSM
 - 8 FRONTIER VILLAGE
 - 9 HIAWATHA HIGHLANDS
 - 10 HISTORIC LIGHTED CROSS
 - 11 HOGAN'S HOMESTEAD
- 12 MILL MARKET
 - 13 MISS MARIE LOCK TOUR BOAT
 - 14 ROBERTA BONDAR PAVILION
 - 15 RUNWAY PARK
 - 16 SSM CANAL NATIONAL HISTORIC SITE
 - 17 SAULT STE. MARIE MUSEUM
 - 18 SEARCHMONT RESORT
 - 19 STATION MALL
 - 20 STOKELY CREEK LODGE
 - 21 THOMSON FARMS
 - 22 WATERFRONT ADVENTURE CENTRE

SPORTS VENUES

- 1 GFL MEMORIAL GARDENS
- 2 JOHN RHODES COMMUNITY CENTRE
- 3 SOO PEE WEE ARENA
- 4 COMMUNITY FIRST CURLING CENTRE
- 5 RANKIN ARENA
- 6 NORTHERN COMMUNITY CENTRE



SAULT STE. MARIE



Giovanni's

Italian Restaurant

Famous for ribs, fresh pasta, sauces, steak and seafood. Home style bread and garden salad served with all entrées.

Check out our daily lunch and dinner features!

Facebook Instagram Twitter



EXPERIENCE A TOUCH OF ITALY
serving the Soo since 1978

516 Great Northern Road Across from the Fairfield Marriott
www.giovanisrestaurant.ca | 705-942-3050




Facebook Instagram Twitter

Located at 522 Great Northern Road
(by Giovanni's and Home Depot)

Authentic Pizzeria	Chicken Wings	Party Combos
Panzarotti	Sandwiches	Fully Licensed
Homemade Soups	Wraps	Eat In/Take Out
Pasta & Meatballs	Outdoor Patio	Online Ordering

WWW.FRATELLISRESTAURANT.CA | 705-256-1313



A BURGER YOU CAN'T REFUSE
A prohibition-era burger joint featuring gourmet burgers, build-you-own burgers, tacos, spiked milkshakes and craft beer.



We are open every day from 11am to midnight.

7 Great Northern Rd
705-946-4444
www.burgerdon.ca

Facebook Instagram Twitter




Capture Your Moment.

Group of Seven Touring Route

Canada's Group of Seven artists were inspired by the landscapes of Algoma and the North Shore of Lake Superior. Start your Group of Seven experience at the Art Gallery of Algoma in Sault Ste. Marie, enjoying their collection of Group of Seven works. As you travel the Algoma region, visit the Group of Seven interpretive installations in 21 locations depicting actual painting sites or in a place highlighting the experiences of the Group of Seven in Algoma and along the North Shore of Lake Superior.

Plan a day on the famous Agawa Canyon Tour Train where you'll see actual sites along the way, like the Montreal River where J.E.H. MacDonald painted *The Solemn Land and Falls, Montreal River*. Enjoy close up sites in the Canyon itself like Bridal Veil Falls captured on canvas by both Lawren S. Harris and MacDonald. Travel through Algoma and along the North Shore of Lake Superior where more unique Group of Seven interpretive installations are awaiting you. Hike to the very spot where Harris painted *Pic Island*. Stand on the shores of Sandy Beach where A.Y. Jackson painted *Shoreline, Wawa, Lake Superior*. This and more await you in Algoma. Seize the opportunity to experience what the Group of Seven saw, what they painted, the feelings they captured and the moments they had in the heart of this beautiful Canadian wilderness.

To start planning your trip visit:
momentsofalgoma.ca

ONTARIO
Yours to discover

MOMENTS *of* ALGOMA
GROUP OF SEVEN



Welcome
Bienvenue
Biindigen

WWW.SAULTTOURISM.COM