

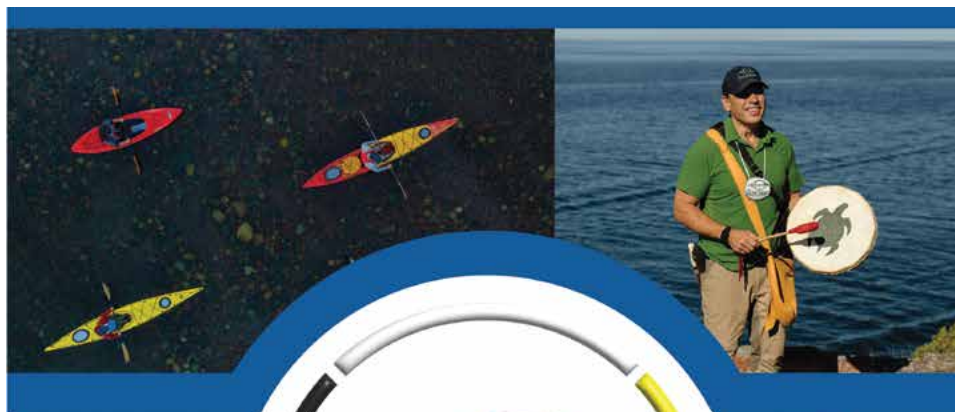
OFFICIAL GUIDE

SAULT STE. MARIE

2025/2026



**SAULT
STE. MARIE**
ONTARIO CANADA



**Proudly
100% Indigenous
Owned Business**



Bridging Cultures - Inspiring Connections



First Nation Indigenous Interpretive Guided Experiences

Canoeing, Kayaking, Hiking, Food Sharing, Team Building, Education & More



www.ThriveTours.ca





Welcome Bienvenue Biindigen

Traditionally known as Baawating (“the place of the rapids”), Sault Ste. Marie is a place of cultural significance. Located in the Heart of Turtle Island, Indigenous people have occupied this region since time immemorial.

We acknowledge with respect, that we are in Robinson-Huron Treaty territory, that the land on which we are gathered is the traditional territory of the Anishinaabe and known as Baawating. Baawating is the home of Garden River First Nation, Batchewana First Nation, and the Historic Sault Ste. Marie Métis Council.

a superior view

aboard the **MISSMARIE**



TOURS DAILY - 10AM & 1PM

• Sault Ste. Marie Ontario • Michigan Waterfront • Historical Canal Tour

Sault Locks tours presents the Miss Marie and a spectacular day or evening tour experience. The tour consists of a boat cruise every day from the beginning of May, all the way until mid October! The "Miss Marie" is a 100 person capacity vessel, please book soon, spots fill fast.

**SNACKS
AND
BEVERAGES
AVAILABLE
ON BOARD**



**PRIVATE CHARTERS
AVAILABLE**
GROUP PACKAGE
PRICING AVAILABLE
20 OR MORE PASSENGERS

MISSMARIE



SAULTLOCKTOURS.CA
(705) 989-4985





WHAT'S INSIDE

6 BEST OF THE SAULT

A snapshot of the city's best attractions.

8 OUTDOOR ADVENTURES

Sault Ste. Marie is the gateway to an outdoor enthusiast's paradise of forests, vistas and wild rivers.

40 AGAWA CANYON TOUR TRAIN

Climb aboard the one-day Agawa Canyon Tour Train for a travel experience that will leave you breathless.

46 ARTS & CULTURE

Sault Ste. Marie is a vibrant hub for art, culture and history.

64 INDIGENOUS CULTURAL EXPERIENCES

Explore and connect with our cultural roots through Indigenous Tourism experiences and events.

68 FESTIVALS AND EVENTS

Festivals that showcase culinary passions, pow wows that immerse you in a cultural experience, and sporting events that fulfill that adrenaline dream.

76 ACTIVITY DIRECTORY

A one-stop resource to plan your perfect vacation.

86 ACCOMMODATIONS

Hotels, motels and lodges. Something for everyone to compliment your stay in Sault Ste. Marie.

89 VISITORS MAP

Discover all the places you can go.

This publication is produced by Tourism Sault Ste. Marie in Canada. Cover photo courtesy of Tourism Sault Ste. Marie. Designed by Jessica Glemnitz / Anthem Design, printed by Millenium Printing. Every effort has been made to ensure accuracy. For more information on Sault Ste. Marie, visit our website at saulttourism.com or call 1-800-461-6020.



SAULT STE. MARIE

Visit
**Sault
Ste.
Marie**
Michigan



saultstemarie.com

906.632.3366



U.S. VISITORS TO CANADA

Passports have been required for return travels to the USA, by all modes of transportation, since 2009 for all citizens. NEXUS cards, and enhanced drivers licenses may also be options for entry. Travellers aged 15 and under require a birth certificate for land or sea travel and a passport for air travel. If you are traveling with a child other than your own or without the child's parents/guardians or your spouse, have the child's birth certificate along with a letter of permission, including name and contact information for that child's parents/guardians or your spouse. Direct all inquiries or questions to the nearest immigration office in your community.

Any questions about entry to Canada may be addressed to:

Canadian Customs Information:

705-941-3063 or cbsa-asfc.gc.ca

United States Customs Information:

906-632-8822 or cbp.gov

CURRENCY EXCHANGE

To obtain the best rate of exchange, we recommend using your credit card or exchanging currency prior to shopping. U.S. funds can be exchanged at most banks.

VEHICLES AND DRIVING

Seatbelts are mandatory for everyone and car seats are required for children under 80lbs. Radar detectors are illegal in Ontario. Studded tires are permitted between October 1 and April 30 in the District of Algoma. Right turns are permitted on a red light after a complete stop unless posted otherwise. Speed limits and distances are posted in kilometres. Liquid fuels are sold by the litre.

CANNABIS

Although cannabis (marijuana) is legal and regulated in Canada, it remains illegal to transport cannabis in any form – including any oils containing THC or cannabidiol (CBD), across Canada's national borders whether you are entering or leaving Canada. For further information visit:

cbsa-asfc.gc.ca

EMERGENCY SERVICES

In the case of an emergency, please dial 911 for immediate assistance. For non-urgent inquiries, please see contacts below.

SAULT AREA HOSPITAL

705-759-3434 | sah.on.ca

750 Great Northern Road, Sault Ste. Marie

Note: Non-Ontario residents may have to pay at registration and/or at time of discharge. They will provide receipt and documents for insurance.

SAULT STE. MARIE FIRE SERVICES

705-949-3335 | saultstemarie.ca

72 Tancred Street, Sault Ste. Marie

SAULT STE. MARIE POLICE SERVICE

705-949-6300 | ssmps.ca

580 Second Line East, Sault Ste. Marie

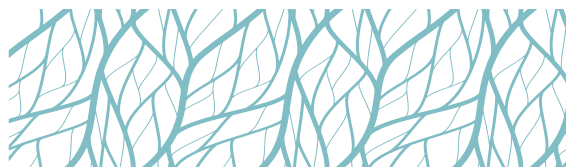
ONTARIO PROVINCIAL POLICE

705-945-6833 | opp.ca

742 Great Northern Road, Sault Ste. Marie

All travelers please ensure to have:

- ☐ Your health and/or insurance card
- ☐ A list of your medications and what they are used for
- ☐ Your complete medical history
- ☐ The contact name and phone number of primary physician
- ☐ The contact name and phone number of next of kin



WHAT TO SEE IN SAULT STE. MARIE!

A snapshot of the city's best attractions.



Gros Cap
Lookout p.8



Thomson
Farms p.56



Agawa Canyon
Tour Train
p.40



Canal District



Pointe Des Chenes
p.19

Sault Ste. Marie
Canal National
Historic Site
p.49

Lake
Superior

St. Marys
River



**SAULT
STE. MARIE**

Sault Ste. Marie Ontario

Highway 17
Trans Canada
Highway



Hiawatha
Highlands p.9



Fort Creek
Conservation
Area p.8



Sault Ste. Marie
Museum p.53



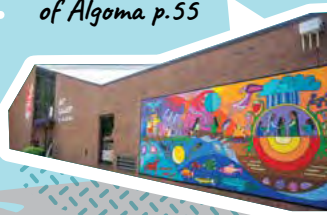
Ermatinger Clergue
National Historic Site p.52

Miss Marie
Lock Tour p.47



Soo Mkt p.56 +
Downtown Plaza p.58

Art Gallery
of Algoma p.55



Entomica p.50 +
Bushplane Museum p.51



Sault Ste. Marie
Michigan



URBAN ADVENTURES



St. Marys River

You don't have to go far to experience adventure in Sault Ste. Marie; we have a number of hikes, paddles and activities you can do just minutes from downtown.

PADDLE THE RIVER! Rent watercraft and explore the St. Marys River from the Waterfront Adventure Centre. Beginner-friendly craft and launching docks will make your experience all the easier. Alternatively, book with Thrive Tours or Forest the Canoe and have an experienced tour guide assist you while giving you information about the river.

ENJOY TWO LOOKOUT HIKES 1. The Odena lookout at Hiawatha Highlands offers a beautiful view south over Sault Ste. Marie — a steep but short climb will be rewarding, we promise! 2. Or, head west to Gros Cap and view the 'end' of Lake Superior, where the water turns toward the city and becomes the St. Marys River. Take in spectacular views of the shipping lane all the way to America!

HIKE A RAVINE OR STROLL ALONG THE WATERFRONT The Hub Trail is a circular, 22km trail around the city but you can tackle sections of it. A popular, family-friendly section is Fort Creek. The trail takes hikers over three picturesque bridges, with lots of opportunities to enjoy the beautiful scenery of the creek below. Keep an eye out for hawks, great blue herons, and monarch butterflies. The Hub Trail also runs along the waterfront; start at the Bushplane Museum and make your way west, for a short but beautiful walk along the water and close to our downtown.

GET CLOSE TO NATURE AT WISHART PARK This new multi-use 2km trail takes you to a bridge over the Root River. See trout and salmon depending on the time of year, as well as bald eagles.



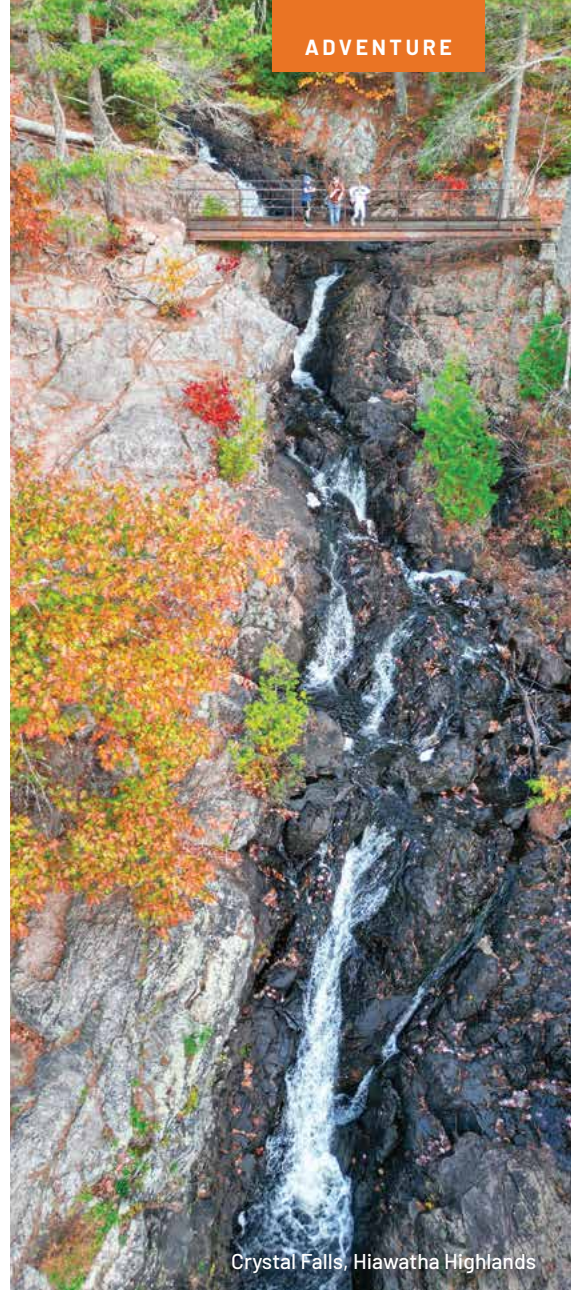
The Hub Trail (Fort Creek)



Gros Cap



The Hub Trail (waterfront)



Crystal Falls, Hiawatha Highlands

VIEW WATERFALLS AT HIAWATHA HIGHLANDS

These spectacular falls are located 2 minutes from the lower Kinsmen Park parking lot. A boardwalk with handrails means they are accessible to all who want to witness these 80 metre cascading falls. For the more adventurous, follow the creek to Minnihaha Falls and see the lower Crystal Falls as well!

For more information, including map links and contact details, please visit the web page via our QR code.



Insider Tip

Take a short detour off the boardwalk and head to the SOO MRKT on Saturdays for a well-earned tasty treat.





SAULT STE. MARIE'S MOUNTAIN BIKING SCENE

Sault Ste. Marie is "Ontario's BC." Here's how to ride these under the radar trails like a local

Adapted from an original piece by [Singletracks](https://singletracks.com) singletracks.com

Sault Ste. Marie has been quietly building a massive network of top-tier singletrack. The rugged terrain is more akin to what riders would expect to find in Quebec or perhaps even British Columbia. The rock slabs, steep hills, and beautiful lakes have led people to call the area "Ontario's BC."

"We're on the shores of Lake Superior, the largest freshwater lake in the world. It's super rugged — we've got awesome super steep, techy terrain," said Travis Anderson, Director of Tourism, who has overseen much of the development. "Compared to what you'd see in the rest of the Midwest the slabs are long. A lot of people say they're reminiscent of Squamish. You've got the steepness that you would see in some of the networks out west... there's nothing like it between the Rockies and Quebec."

To date, the City has raised over \$3.7 million in grant money to fund trail building. The trail building kicked off at Hiawatha Highlands in late 2020 and has continued through the present day. By 2025

the Sault has built an additional 24km of new singletrack, bringing the Hiawatha Highlands network up to 65km. They anticipate building at least 8km more of singletrack.

The growth of the mountain bike trail system has completely transformed the cycling culture of the city. "Back 10, 15 years ago, you'd go to the parking lot at Hiawatha, and there might be five or six cars. Now you're going there, and there's probably 20 cars parked there at least," said Brad Phaneuf, President of Algoma Bikes. These cars come partly from increased tourist traffic, but the local riding community in this city of 77,000 has also boomed. Phaneuf has even changed the inventory he stocks in his bike shop as a result of the local mountain bike boom. Before the recent trail development began, Algoma sold primarily commuter bikes. Now, the shop primarily sells mountain bikes. "Mountain bike sales have boomed, for sure," said Phaneuf. Gravel bikes also make up a large percentage of bike sales.



Crystal Creek has been the focal point of much of the recent trail construction at Hiawatha Highlands – it's now home to a bevy of top-tier jump lines and flow trails. "We built some big-ass jumps," said Anderson. The trails offer "some really nice berms, some smaller tabletops, rollers, what have you, and then expands all the way up to what we call Big Kahuna and Jaws, where we've got 20-plus-foot-long tabletops, some big step downs." One of the continuous jump runs, which connects two different trail segments, "is over 900 [linear] meters, which is one of the longest descents in all of Ontario," said Anderson.

Farmer Lake has also seen substantial trail development, but the character of the singletrack here is quite different. Within this cluster, you'll find two distinct sets of trails – a batch of short, technical enduro trails and a longer ride around the lakes that's not as technical.

"If you're an aggressive trail rider, then Farmer Lake would be your area... that's where you want to go if you're looking for some techy rock slab descents and drops," said Anderson. Pedaling out toward Farmer Lake itself, the riding quickly transforms into a backcountry-style adventure. "You lose cell service," said Anderson. The trail "connects to multiple inland lakes, and is more of a rugged kind of flowy, modern XC." In addition, riders who are willing to brave the longer pedal will find "some impressive rock features, some very long descents, cool drops, and that kind of stuff."

To read the full article and get more info visit: saulttourism.com/outdoors/mountainbike



In addition to the investment at Hiawatha Highlands, the City is also building a crucial connectivity bridge project, to in-town singletrack development, Sault Ste. Marie is expanding mountain bike access on all fronts. If you haven't visited Ontario's BC yet, it's about time to plan a visit!

Insider Tip

The third, annual **Salty Marie**

Trails Fest occurs in July. The event is a fantastic celebration of trails for mountain bikers, with vendors, food and beer. Riders can choose from a 50km, 25km, or 10km race.



Insider Tip #2

You can stay in town and bike – check out the **Finn Hill flow trail** opened in 2024, and the awesome **Esposito Pump Track** too!

Visit us... Your Friends are already here!



PROUDLY BREWED IN SAULT STE. MARIE



50 Pim Street • Sault Ste. Marie, Ontario P6A 3G4 | 705.450.7468



northernsuperior.org



AN IHG® HOTEL
SAULT STE. MARIE
ONTARIO

**PACKED WITH
PERSONALITY**

320 Bay Street, Sault Ste. Marie, ON
(705) 759-8200 | 1-800-HOLIDAY
hiexpress.com/saulton



- Downtown, steps from Station Mall & across from GFL Memorial Gardens.
- Complimentary hot, fresh breakfast bar.
- Self-serve laundry, indoor pool, whirlpool, sauna & fitness rooms.
- Fridge, microwave & Keurig coffee station in all rooms & suites.

IHG® Rewards Club



HIKING ROBERTSON CLIFFS

Robertson Cliffs, just 30 minutes north of Sault Ste. Marie, is one of the most scenic hikes in Ontario and one of the best ways to experience the fall colours. Views from any of the incredible lookouts stretch for miles out across Bellevue Valley, towards the Goulais River, and as far as Lake Superior.

WHERE ARE THE CLIFFS? Robertson Cliffs are a short, picturesque drive north of Sault Ste. Marie, along Highway 17. There are three parking areas at the trailheads, located on Robertson Lake Road. Use the QR code for precise details.

HOW LONG DOES THE HIKE TAKE AND HOW DIFFICULT IS IT? The direct route to the top, marked by blue and white markers, is about 45 minutes or 2km one-way, with some steeper sections included. Alternatively, there is an easier, flatter route, marked by yellow markers, which takes you past beautiful waterfalls. This route is about 90 minutes or 3km, plus return. All routes are clearly marked and there are easy to read maps along the way.

For the best views, and to beat the crowds, catch a fall sunrise at around 7:30 am. Alternatively, the sunset is just as beautiful and sets at around 7:15 pm in the fall. Bring headlamps as you'll be hiking parts of it in the dark!

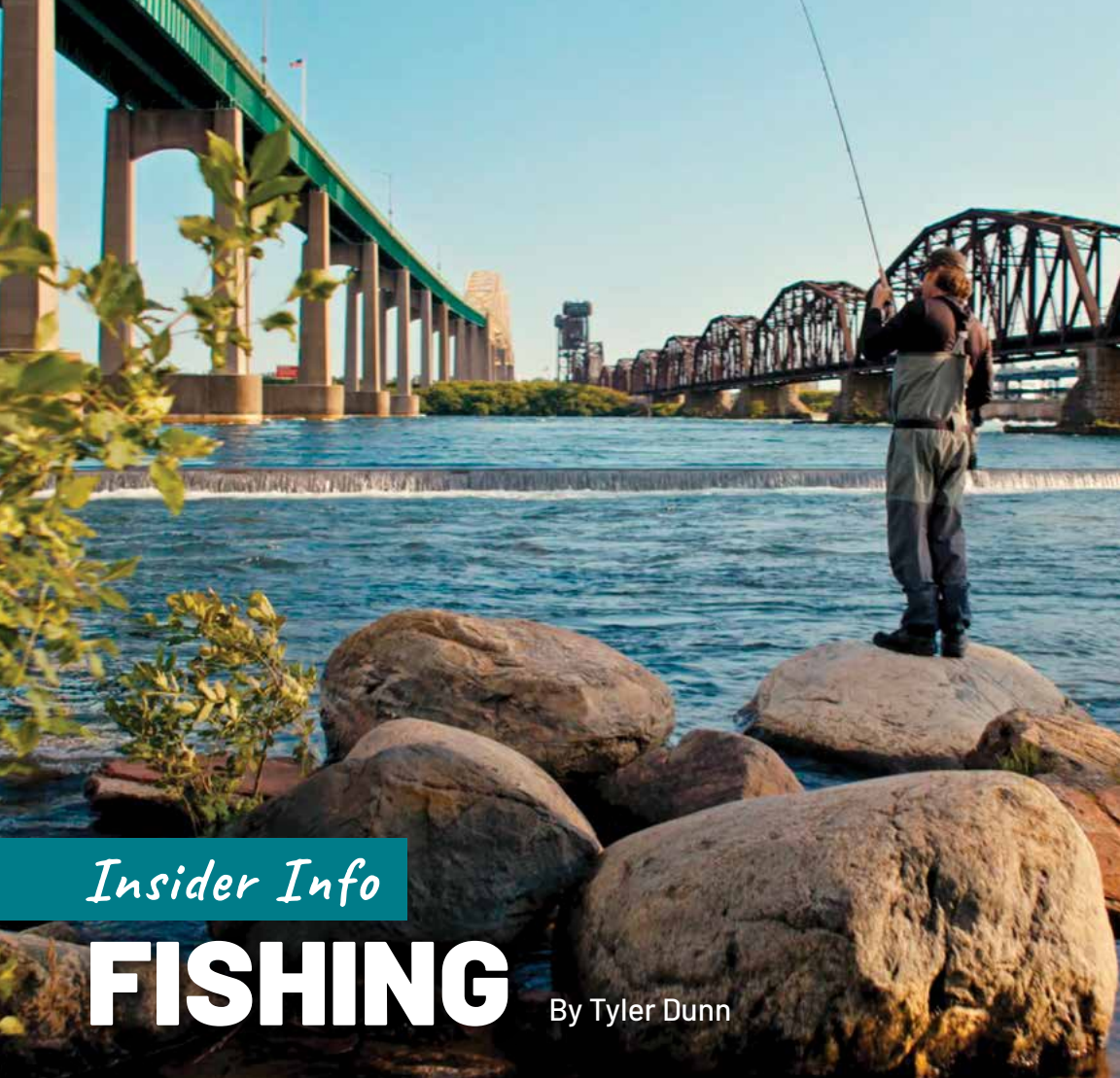
Insider Tip

WHO MAINTAINS THE TRAILS AND HOW CAN I HELP? The trails are maintained by the Algoma Highlands Conservancy, a not-for-profit organization that is run by local volunteers. The Conservancy relies on memberships and donations to keep the trails open and safe for generations to come and greatly appreciates your support. For more information please visit: algomahighlandsconservancy.com

! To protect wildlife and the visitor experience please note that Robertson Cliffs is designated as a no drone zone'

For more information visit our website
by using this QR code





Insider Info

FISHING

By Tyler Dunn

Local fisherman Tyler Dunn shares his thoughts on fishing in Sault Ste. Marie.

Dunn: “I’ve seen 30 lbs Kings, I’ve seen several Sturgeon hooked and landed over 40-50 pounds. Every kind of trout and salmon I’ve seen caught here, all trophy sizes. My name is Tyler Dunn and I’m a full time fishing guide here in Sault Ste. Marie. I started in the fishing industry about 15 years ago as a writer and I started guiding a few years after that. I’ve been a full time fishing guide for about the last 9 years. There’s always something running through the St. Marys Rapids, whether you’re a new Canadian, female, male, young or old, whether there’s spring Steelhead or Atlantics or Fall’s King Salmon, there’s always something in the river to fish for. One

of the best things about fishing around the Soo is the accessibility, right downtown. You can catch trophy fish ten minutes from the boardwalk, you have casinos, hotels, restaurants, all within 10-15 minutes, including the International Bridge. My favourite part about fishing around Sault Ste. Marie especially on the St. Marys River is the variety of species and methods of catching fish. Whether it’s summer time Rainbow Trout, nighttime Walleye, or spring time Pike there’s a plethora of species of fish around. Whether you float fish, fly fish, spin fish, you can always fish the St. Marys Rapids any style, any time of the year.”



WHERE TO BUY A LICENSE

Canadian Tire

200 McNabb St
705-949-0770

Great Lakes Outfitters

162 Old Garden River Rd
705-253-2361

HiWay Variety Outfitters

25 Trunk Rd Unit 1
705-946-3737

Ontario Travel Information Centre

261 Queen St W
800-668-2746

Outfitters SSM

87 Huron St
705-759-0008

The Trading Post

1332 Great Northern Rd
705-759-4518

LOOKING FOR A LOCAL GUIDE?

Angling Algoma

anglingalgoma.com
705-943-5286

Redwood Fishing Charters

redwoodcharters.net
705-941-8272

SooSteelheader Guide Service

soosteelheaderguideservice.com
705-206-9963

Superior North Charter and Guide Services

superiornorthcharters.com
705-255-0389

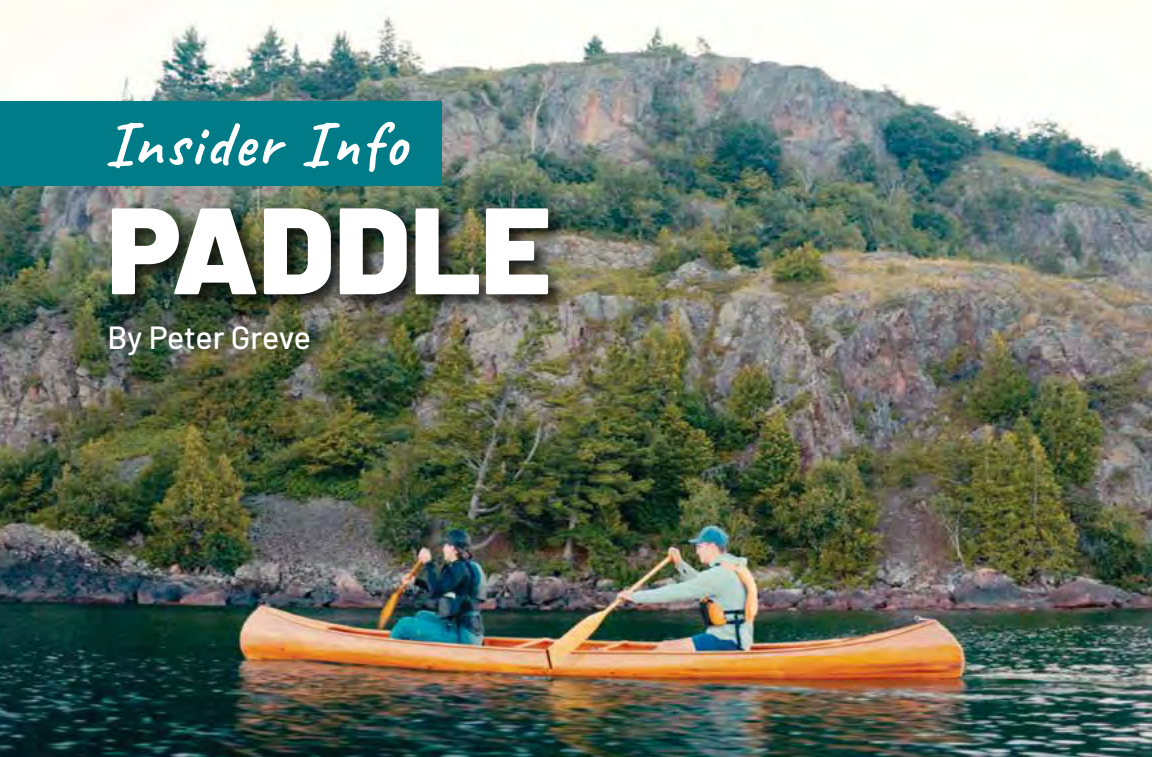
Tyler Dunn Guiding

tylerdunnguiding.ca
705-206-0984

Insider Info

PADDLE

By Peter Greve



Local paddler Peter Greve shares his thoughts on paddling in and around Sault Ste. Marie.

Greve: “There is a certain magic that happens

when someone connects to the water, very low to the water, in a canoe and if you're able to introduce someone into that experience safely that fosters future experiences where people enjoy the water. We have a lot of different options for paddling; canoes, kayaks, and standup paddle boards and so, as someone who loves the water, I dove into all those different water sports. Sault Ste. Marie is uniquely positioned to have access to one of the greatest expanses of freshwater on the planet. One of my favourite places to paddle is in a river setting. It's really calm, peaceful, you can follow a route, it's very simple. A few years back I did a paddling trip from Sault Ste. Marie to Wawa and this experience tied together the idea that we can experience adventure in our backyard, literally paddle from a downtown location into a remote wilderness location where you won't see anyone for days and those places are actually very close to each other and it's all the cleanest, clearest freshwater on the planet.”

To watch the video and to learn more about paddling in Sault Ste. Marie including where to rent craft, launch from or for guides, please visit:

saulttourism.com/outdoors/paddle



THE LAKE SUPERIOR COASTAL DRIVE

Sault Ste. Marie is the perfect destination to explore the beautiful Lake Superior coast.

9. AGAWA ROCK PICTOGRAPHS

A sacred site where generations of Ojibwe have come to record dreams, visions and events. One of the most famous pictograph sites in Canada.

8. LAKE SUPERIOR PROVINCIAL PARK VISITOR CENTRE AT AGAWA BAY

Information about the area, interactive displays, giftshop and paths to the Agawa Bay beach.

7. ALONA BAY Roadside rest-stop allows visitors to get out and enjoy the stunning scenic lookout. An interpretive panel offers details about the Edmund Fitzgerald.

6. AGAWA CRAFTS AND THE CANADIAN CARVER Beautiful one-of-a-kind carvings, paintings and other crafts.

4. / 5. BATCHAWANA BAY & PANCAKE BAY BEACHES

4km long sandy beaches, great for swimming.

3. VOYAGEUR LODGE

Famous apple fritters!

2. CHIPPEWA FALLS Inspiration for a number of Group of Seven paintings.

1. SAULT STE. MARIE Start here!

Sault Ste. Marie

9

8

7

6

5

4

3

2

1



DISCOVER YOUR PERFECT TEE TIME



CRIMSON RIDGE Enjoy waterfalls, creeks, numerous elevation changes, and incredible views and vistas on this scenic par 72. Pro-shop and driving range available.

crimsonridge.com

RESTAURANT Embers On The Ridge Menu items include steak & seafood.

crimsonridge.com/embers

ROOT RIVER GOLF CLUB Wide fairways and accessible greens, with some interesting elevation, make it a great 9-hole course for a family golf day.

rootriverco.com

RESTAURANT The Root Menu items include steak, seafood & pasta.

facebook.com/rootrivergolf

SAULT STE. MARIE GOLF CLUB Stanley Thompson designed, with a great blend of fairway, rough and water, you can walk or ride this par 72 course.

saultgolfclub.ca

RESTAURANT Mulligans Irish Pub Enjoy classic pub fare and locally brewed beer in this traditionally atmospheric watering hole.

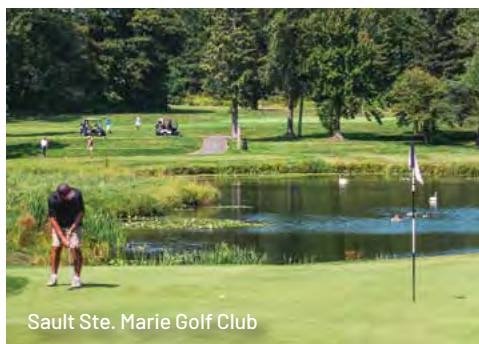
mulligansirishpub.ca

SILVER CREEK The Arthur Hills designed 18-hole championship layout is one of Northern Ontario's longest courses, with a par of 72 and measuring from the championship tees 7435 yards.

golfsilvercreek.com

RESTAURANT All day breakfast, sandwiches, burgers and a fish-fry Fridays.

golfsilvercreek.com/restaurant



Sault Ste. Marie Golf Club



Crimson Ridge



BEST SANDY BEACHES

Pancake Bay

family

When the summer hits, the beaches come calling. Here are some of our best sandy beaches to visit.

AGAWA BAY BEACH At the southern end of Lake Superior Provincial Park lies this stunning 3km sandy beach. Passes are available for day use or camping at the visitor center.

BATCHEWANA BAY PROVINCIAL PARK & BEACH Batchewana Bay's sun-soaked, 5km beach is the perfect place to spend a summer's day with the family. The water here is shallow, warm, and perfect for swimming! Facilities include picnic tables and bathrooms. Passes for this day-use provincial park can be made online or at the visitor center located on Highway 17.



Pancake Bay

HARMONY BEACH This is the first beach you will encounter when traveling north from the city. Only a half-hour drive and features 3.2km of stunning sand and great swimming.

PANCAKE BAY PROVINCIAL PARK & BEACH

Around the corner from Batchewana lies the jewel in the crown of beaches. Golden sand beach and crystal clear Caribbean blue water make it a favourite. Day passes are available as well as overnight passes for the campground.

POINTE DES CHENES A family-friendly sandy beach in Sault Ste. Marie city limits. This slice of paradise is only a short drive from downtown or via a city bus that runs on weekends in the summer. Enjoy the day use area with large grass lawns, picnic sites and shelters and washroom facilities. For those seeking a new adventure, try the onsite Disc Golf course.



ALL UNDER ONE ROOF



SOOBLASTER

Eat - Drink - Play

Place to any Parties or Celebration

YOU'LL HAVE A BLAST!

*BUSINESS PARTY *PRIVATE PARTIES *EVENTS
*TEAM BUILDING *BIRTHDAY PARTIES
*CONFERENCE & MEETINGS *BUSINESS
GET-TOGETHER *ANY PARTIES & CELEBRATION

For More Details

CALL: 705-450-0095

345 Queen street



THE TASTE OF
Indian & Hakka

**DINE IN
TAKE OUT**

DELICIOUS DINING EXPERIENCE

Enjoy the Exclusive

THE TAJ CHEF TABLE

Tuesday & Thursday

For more info & reservations, call

705 253 4444

www.thetajindiancuisine.ca



420 Great Northern Road



HOME

AWAY FROM HOME

Walking Distance to Agawa
Canyon Tour Train, Gateway
& Station Mall

- ✓ Medical Rate
- ✓ Covered Parking
- ✓ Free Breakfast
- ✓ Banquet & Conference Rooms
- ✓ Fitness Center
- ✓ Onsite Restaurant
- ✓ Extended stay available (kitchenette rooms)

BOOK NOW

WWW.DAYSINNSSM.COM



866-759-1400

332 BAY STREET
SAULT STE. MARIE

**CONTACT US DIRECT FOR
THE BEST RATES AVAILABLE**



All Type of Catering



Quality & Professional Catering

Catering Services for Various Events



**Birthday
Wedding
Party
Corporate Events
Anniversary**

If you are planning an event such as a wedding reception or business luncheon, deciding what food to serve is an important decision. By choosing to use a catering company, you can take some pressure off the planning and leave more time to enjoy your guests.

For Any Inquiry: info@thetajindiancuisine.ca
www.thetajindiancuisine.ca





CHOOSE YOUR FAMILY ADVENTURE!

family

From outdoor adventures to indoor thrills, here are 12 must-try activities to keep your family entertained.

Outdoor Adventures

BELLEVUE PARK Bellevue Park is the best place to go for **multiple playgrounds** and a fun **splash pad**. The park also offers duck ponds and a scenic trail that guides you by the waterfront.

MOUNTAIN BIKING AT HIAWATHA Check out the pump track and the new **single-track flow** trails designed for kids (great for adults too!)

DOWNTOWN PLAZA Located downtown, the plaza features a **climbing frame** and **skating** in the winter with lots of events throughout the year!

PADDLE THE RIVER Stop by the Waterfront Adventure Centre and rent/launch your watercraft! For a bucket-list experience **paddle through the Canadian Locks** at the Sault Ste. Marie National Historic Site

SANDY BEACHES Dip your toes into the **biggest freshwater lake in the world!** With plenty of beaches close by, you can pack a lunch and hit the beach in no time. For more information on local beaches visit page 19.

Indoor Thrills

ENTOMICA INSECTARIUM Get up close with a variety of **fascinating creatures**. Of course, check out the **Bushplane Museum** which has real planes that kids can climb inside!

INDOOR CLIMBING WALL This fun and **challenging wall** can be booked by the hour throughout the day at The Outfitters in the Canal District.

ICE CREAM Everyone loves ice cream! Check out Holy Cows or Big Moose Ice Cream Parlours, or try a local twist and **treat yourself** at the Gelato Mill.

SOO BLASTERS Perfect for a rainy day or to beat the heat! Soo Blasters is filled with **arcade-style games**.

TEN-PIN BOWLING AT NORTHCREST LANES Located directly behind Quattro Hotel, **strike up some fun** with the family!

LET'S GO GREYHOUNDS!! From September to March, cheer for the Greyhounds, our **local OHL hockey team**, and enjoy the atmosphere of this storied team that gave Wayne Gretzky his #99!

SOO AXE THROWING Family friendly axe and knife throwing venue.

10 GREAT HIKES

IN AND AROUND THE SOO



Sault Ste. Marie is a hiker's paradise! Explore incredible lookouts, majestic waterfalls, the rugged charm of the Canadian Shield and fascinating historical sites. Enjoy the fresh air and the peaceful sounds of nature, from rustling leaves to gentle waves along the shore.

1 THE VOYAGEUR TRAIL AT THE HIAWATHA HIGHLANDS

Length: 1-20km

Difficulty: ●○○○

**some elevation*

Must See: Crystal Falls.

The Hiawatha Loop (which passes the stunning Crystal Falls), Odena Loop and Mabel Lake Loop make up around 20km of clearly marked trails in this area, which are part of the larger Voyageur Trail system.

2 FARMER LAKE / BEAVER LOOP

Length: 8km

Difficulty: ●●○○

Must See: The view of the lake.

This side-trail from the Voyageur Trail winds and weaves up, over and through the Canadian Shield, through a mixed hardwood forest to a beautiful lake. Carry on hiking to link up with the main Voyageur Trail, or return to the Connor Road parking lot from where you began.

3 OJIBWAY PARK NATURE TRAIL

Length: 2.5km

Difficulty: ●○○○

Must See: Scenic lookout gazebo.

The Ojibway Park Nature Trail, situated in Garden River First Nation, is only a 15-minute drive from Sault Ste. Marie. This short but beautiful trail offers visitors an opportunity to explore the region's natural beauty and cultural significance. The trail includes interpretive signs that share the area's knowledge and history.

4 ROBERTSON CLIFFS

Length: 4km – 7km

Difficulty: ●●○○

Must See: The lookout at sunrise.

This hike is a must-do for any hiker exploring the Sault Ste. Marie area. Full details are on page 13.

5 EAGLE RIDGE LOOKOUT AT HARMONY BEACH

Length: 3km

Difficulty: ●●○○

Must See: Lookout over Harmony Beach.

A 30-minute drive north of Sault Ste. Marie takes you to a section of the Voyageur Trail at Harmony Beach, where you hike to a spectacular lookout overlooking Lake Superior.

6 ROCK LAKE

Length: 5km

Difficulty: ●●○○

Must See: The unusual smooth rocks.

overlooking the lake.

A beautifully scenic drive east through the Sylvan Valley takes you to the Rock Lake trailhead, offshoot from the Voyageur Trail system. The highlight is a climb up unique, unusually white, smooth, table-top rocks that feel like they should be an inspiration for a Group of Seven painting.

7 EDMUND FITZGERALD LOOKOUT

Length: 6 – 13.5km

Difficulty: ●●○○

Must See: Lookout over Pancake Bay.

This trail features a well-marked hike through a beautiful forest followed by a climb to a spectacular lookout over Pancake Bay. You can even see as far as the place where the Edmund Fitzgerald ship tragically sank in 1975.

8 AGAWA ROCK PICTOGRAPHS

Length: 1km

Difficulty: ●●●○

**steep, slippery steps*

Must See: The sacred pictographs.

Situated at the south end of Lake Superior Provincial Park are the Agawa Rock Pictographs, one of the most famous Indigenous pictograph sites in Canada. The hike is short, but with very steep, slippery steps. Please take note and abide by the respectful rules of this sacred site.

9 LAKE SUPERIOR COASTAL TRAIL

Length: 1 – 65km

Difficulty: ●●●○

Must See: The rugged beauty of the big lake.

For those seeking true adventure, consider this spectacular and rugged coastal trail. It extends from Agawa Bay in the south to Chalfant Cove just north of Warp Bay in the north. The full hike takes 5-6 days if done in one go because many sections require climbing over rocky headlands and cobble beaches.

10 NOKOMIS TRAIL

Length: 3.8km

Difficulty: ●●●○

Must See: Lookout over Old Woman Bay.

Situated in Lake Superior Provincial Park, the trailhead is across the road from Old Woman Bay Beach parking, and the trail itself takes around 2 hours, with breaks to enjoy the incredible views!

For more information, including map links and contact details, please visit the web page via our QR code.





HOW TO EXPERIENCE OUR BREATHTAKING FALL COLOURS

Sault Ste. Marie is the perfect place to take in some of the most stunningly vivid fall colours in Canada. Our Instagram-worthy pictures prove it. Here is a handy guide on how to experience them for yourself.



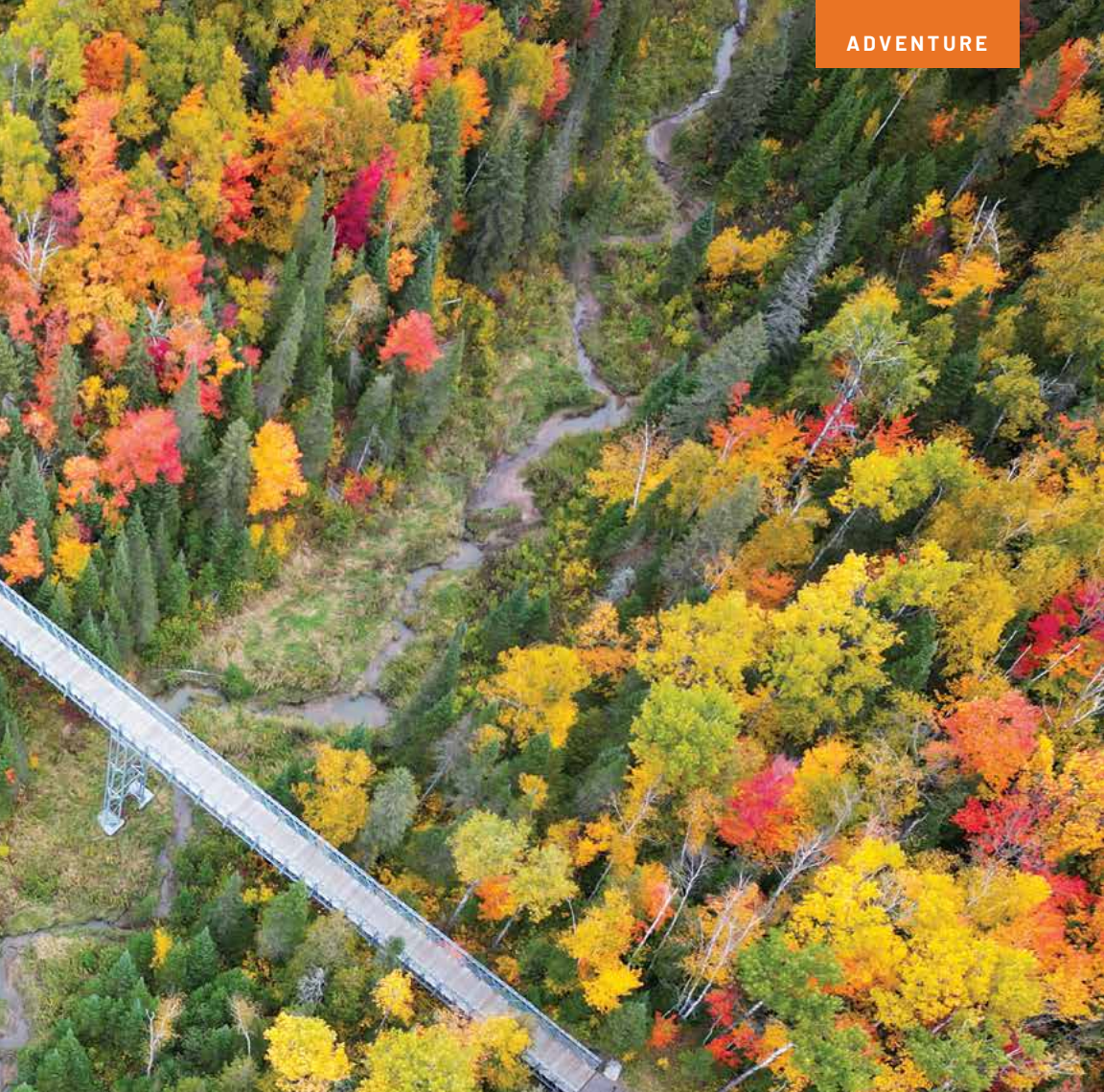
BY ROAD › ENJOY A SCENIC RIDE

Enjoy our incredible fall colours from the freedom of your vehicle. Head north of the city up the Superior coast, cruise through the winding roads of the Bellevue Valley or take a tour east through the picturesque Sylvan valley. You'll have plenty of chances to stop and admire the stunning vistas and rivers that complement the beautifully lined roadways.



BY LAND › GET YOUR HIKING BOOTS ON AND HEAD TO THE CLIFFS

The Soo is the start of so many incredible hiking trails including the Voyageur and Trans-Canada trail. Head to Hiawatha Highlands or Fort Creek to get a full taste of colours within the city. Alternatively, take a scenic drive north to the Algoma Highlands Conservancy and hike King Mountain or the stunning Robertson Cliffs.



BY WATER › TAKE A GUIDED PADDLE

What better way to see the full vista of fall colours than from a boat? Let our experts guide you along the St. Marys River, up the Superior coast, or to one of our many inland lakes in the area. Book a bucket list trip with Forest The Canoe, Thrive Tours or the iconic 'Big Canoe' from Métis Tours (groups only).



BY TRAIN › SIT BACK AND RELAX

The Agawa Canyon Tour Train is the perfect way to enjoy fall. Sit back, relax and watch the stunning colours of Algoma from your window on this legendary and bucket-list journey.



BY BIKE › ENJOY A RIDE WITH A

VIEW Hiawatha Highlands has over 65km of incredible mountain biking trails. Enjoy some top quality outdoor adventure while taking in our beautiful fall colours. For a family ride head to Fort Creek on the Hub Trail and enjoy the view from one of the bridges over the ravine.



SHARE YOUR PHOTOS WITH US!

@sault.ste.marie



BW Premier
COLLECTION

WATERTOWERINN



Offering a variety of rooms and suites.

Unique places to eat and entertain featuring restaurant and pub menus.

Expansive recreational facilities including 4 pools, indoor and outdoor whirlpools, sauna and fitness.

Outdoor courtyards with waterfalls and waterways.

Trailhead information... plan your Lake Superior outdoor excursions.

And check out our video wall and the McGuffin gallery!

Book direct for best rates and packages.

Talk to our reception team: **705 949 8111** | Toll Free **800 461 0800**

Located at the crossroads of Sault Ste. Marie, under the landmark water tower.

See all we have to enjoy at www.WaterTowerInn.com



FIND YOUR TRUE
NORTH EXPERIENCE

TOURS. TRIPS. OUTFITTING.

- Canoe and Kayak Rentals
- Canoe Tours and Hiking Tours
- True North Adventure Bus Day Trips



Forest The Canoe



BEAVERTAILS®
★ SINCE 1978 ★



Follow us!



Beaver Tails - Sault Ste. Marie
The Roberta Bondar Park and Tent Pavillion
65 Foster Drive 705-759-5075
www.beavertails.com

WINTER IN THE SAULT



Experience the best winter activities in a place that does winter right!

FUN WINTER EVENTS Bon Soo is a tradition over 60 years old! Ten days of winter fun each February includes Bum Slides, the Polar Bear Plunge, live music, and a huge variety of fun things to do all over the city! We also have a wide choice of music, comedy and theatre events to cozy up and enjoy all winter long! Visit our events page for more information: saulttourism.com/events

SKATING Sault Ste. Marie offers several outdoor skating rinks, perfect for embracing winter fun! Glide along the stunning waterfront trail at Clergue Park, just steps from the St. Marys River. Visit the new Downtown Plaza, where a rink with its own cooling system ensures an extended skating season. The Plaza also boasts a lively atmosphere with a stage hosting regular events like live music and movies, plus food and drink trucks, cozy log fires, and enchanting lighting displays. Don't miss the Rink in the Canal District, featuring free skating and bookable times for a more personalized experience.





SNOWSHOE THROUGH A TRUE WINTER

WONDERLAND Being in the Lake Superior snowbelt means we have an abundance of snow. Snowshoeing is a great way to enjoy winter and get some great exercise. Check out the trails at Hiawatha Highlands (which has rentals) or take a guided tour with Forest the Canoe, Thrive Tours or Walk Among The Trees.

ICE CLIMBING Looking for a unique and thrilling adventure? Try climbing up an incredibly beautiful, frozen waterfall! Check out our website for a list of local expert guides.

TAKE A TOUR TO THE SPECTACULAR ICE CAVES

(WEATHER DEPENDENT) These were recently voted one of 52 must-visit places by the New York Times. Enigmatic, mysterious, and just beautiful to see. We recommend going with an expert guide and Forest the Canoe offer guided tours with all the safety equipment included.

Tour Links: saulttourism.com/plan/tour-guides



SHARE YOUR PHOTOS WITH US!
@sault.ste.marie



WHY SKI AT SEARCHMONT?

Searchmont Resort is often described by locals as a hidden gem. Word is getting out though, increasingly making it less 'hidden', but still a 'gem'. Here is why people are coming to ski at Searchmont.



1 BIG VERTICAL DROP: Searchmont has just over 700 feet of vertical drop, one of the biggest in Ontario and the Midwest. For comparison, that's the same as Blue Mountain and 40% higher than most of the hills in Michigan.

2 NO LIFT LINES: Compared to larger resorts, Searchmont offers a more relaxed, less crowded experience, ideal for those looking to avoid long lift lines so you can wait less and ski more.

3 MORE SNOW: Being in the Lake Superior snowbelt, the resort benefits from more than 3 metres of snow each winter — some of the most outside of the Rockies. In addition, comprehensive snow making means Searchmont typically opens in November and stays open until mid-April.

4 AFFORDABLE PRICES: Searchmont offers more affordable lift ticket prices and accommodation options compared to other hills in the area, making it a great choice for those on a budget. In 2025, an adult weekend day-pass was \$30 less than Blue Mountain, and \$80 cheaper than Boyne Mountain (factoring in exchange rates).

5 VARIETY OF TERRAIN: Searchmont provides a range of runs for all skill levels. The Buzzsaw lift is perfect for beginners, and the Goulais and Quad lifts offer black runs for experts, including glade and off-piste areas. The Main lift is a perfect blend for intermediate skiers with long, smooth groomers. There is also a terrain park, if that is your thing!



6 SCENIC VIEWS: Skiers can enjoy breathtaking views of the surrounding Canadian Shield and forests, making for an enjoyable experience both on and off the slopes.

7 FAMILY-FRIENDLY: The resort is known for being family-friendly and laid-back, with programs for kids and beginners, as well as a roaring fireplace, canteen and newly built restaurant—The Kiln — which often has live music.

8 WELL-EQUIPPED FACILITIES: Searchmont provides good amenities such as rental equipment, a ski school, a large indoor seating area and comfortable lodging options, ensuring a pleasant stay.

9 PROXIMITY TO SAULT STE. MARIE: Located just outside of Sault Ste. Marie, Searchmont is easily accessible for those wanting to stay in the city.



Insider Tip

Get there early in the day and enjoy west-coast powder after a dump! You'll feel like you're skiing on a cloud! searchmont.com



SOO HIGHLANDS LOOP: THE ULTIMATE SNOWMOBILING ADVENTURE

From epic wilderness trails to cozy comforts, this is the perfect day ride!

The Soo Highlands Loop in Sault Ste. Marie is a snowmobiler's dream come true. Offering pristine groomed trails maintained by the Sault Trailblazers Snowmobile Club that wind through breathtaking wilderness, this loop perfectly balances adrenaline-pumping adventure with unbeatable scenery and cozy stops along the way.

Leave the city behind, and within minutes, you'll immerse yourself in a snowy paradise. Picture yourself cruising along wide trails flanked by towering cedars and dramatic bluffs. The Soo Highlands Loop isn't just a ride, it's a journey into the heart of nature. Thanks to our abundance of fresh snow, every trip feels like carving your own path through winter magic.

A highlight of the Loop is a stop at Searchmont Resort, a snowmobile-friendly ski resort that

welcomes riders. It's the perfect spot to fuel up, stretch your legs and enjoy a warm, hearty lunch. After a day of riding, return to the comfort of one of Sault Ste. Marie's snowmobile-friendly hotels and cap off your trip with a delicious dinner at one of our outstanding local restaurants or toast your adventure with a craft beer from one of our beloved local breweries.

The Soo Highlands Loop combines the best of both worlds—untamed wilderness and the comforts of city hospitality. Whether you're a seasoned snowmobiler or embarking on your first ride, this loop is your ticket to an unforgettable winter adventure. Come experience the thrill, beauty, and unbeatable vibe of snowmobiling in Sault Ste. Marie.

THE BEST FAT BIKE RIDES IN THE PROVINCE!



Over 75km of epic trails, unique terrain, and the ultimate adventure vibe!

Fat biking has exploded in popularity in recent years, evolving from a niche winter sport into one of the most exhilarating outdoor activities. Born in the 1980s in Alaska, fat bikes were originally designed to conquer soft, uneven surfaces, and today they've taken the cycling world by storm. Riders now experience a thrilling, year-round adventure on snow-covered trails, frozen lakes, and rugged terrain — perfect for those seeking something unique and unforgettable.

Right here in Sault Ste. Marie, we've built the ultimate fat biking experience. We're not just keeping up with the trend — we're setting the standard. With over 75 kilometers of world-class, groomed fat bike trails, we boast the longest and most varied rides in Ontario. Whether you're carving through the pristine forests at Hiawatha

Highlands or conquering the climbs at Crimson Ridge, our trails offer something for every rider, from first-timers to seasoned pros.

We're more than just the best trails — we offer the best vibe. From the thrill of the ride to the community of passionate riders, every journey is part of something bigger. With rentals, guided tours, and events like the Frozen Toe Fat Bike Race, we've created an environment that's welcoming and full of energy.

Come discover why we're the unquestioned leaders in fat biking — and experience the best terrain, longest rides, and most epic adventures in the province!

saulttourism.com/outdoors/biking

THE SOO'S WINTER PLAYGROUND

HIAWATHA HIGHLANDS



Enjoy the perfect day of winter activity in Sault Ste. Marie with cross-country skiing, snowshoeing and fat biking.

Hiawatha Highlands = WINTER. Take the 10-minute drive from downtown Sault Ste. Marie, on any winter weekend, and discover this for yourself. The parking lot outside the iconic Soo Finnish building will buzz with activity as people hurry to get skis on, unload fat bikes, or chat happily about the trail they just completed. There will be an unmistakably friendly atmosphere because whatever your chosen activity is, you're about to experience winter the right way.

CROSS-COUNTRY SKIING Many will say their favourite activity at Hiawatha is cross-country skiing. Over 50km of professionally groomed trails for both classic and skate skiing on three unique systems, offer something for all abilities.

The Pinder system has 10km of green and blue trails with just a hint of elevation, perfect for learning

cross-country skills. The beautiful Red Pine and Crystal systems are more of a challenge for those looking for some elevation around beautiful creeks and forests.

Night skiing is also available with the 2km Kinsmen lit section alongside the clubhouse and monthly lantern skis, which take place on the Pinder trail.

Insider Tip

In January, ski to Mabel Lake. This beautiful there-and-back, backcountry trail, takes you to a stunning lake with views for miles. Bring snacks or lunch, or go with friends to make this particular ski a true winter experience!



SNOWSHOEING There are more than 9km of snowshoe trails at Hiawatha, plus the Voyageur Trails that start at Connor Road. The Pinder trails are relatively flat. If you are looking for a real winter workout, head to the Crystal Creek trail for 4km of vigorous ups and downs and heart-pumping exercise!

FAT BIKING There are over 55km of groomed Fat Biking trails at Hiawatha Highlands making this one of the most expansive networks in the province! Rentals are available at the clubhouse. Read more about this growing sport on page 33.

PASSES, RENTAL AND CLUBHOUSE WITH FOOD AND DRINK Hiawatha Highlands has a cozy clubhouse where you can buy passes and refreshments (including cold and hot food) or rent equipment – skis, poles, boots, snowshoes, or fat bikes. Find out everything you need to know here: hiawathahighlands.com



2 Amazing Attractions
in One Location!

FREAK OUT FIND OUT BUG OUT

Live Vivariums



CANADIAN BUSHPLANE
— HERITAGE CENTRE —

WING IT EXPLORE IT DISCOVER IT

Interactive Exhibits

50 Pim St.
Sault Ste. Marie, ON
Bushplane.com



Visit the **OLDEST STONE**
buildings in **NORTHERN ONTARIO**
and discover the stories
from **over 200 years ago.**

Begin your journey at the Heritage Discovery
Centre to unfold the **"STORIES STEEPED IN STONE"**
through an introduction movie, and stop by at
"THE POST" gift shop for some great souvenirs.

Open Year Round | Admission Fees Apply



Charles Oakes Ermatinger Old Stone House

Francis Hector Clergue Blockhouse



ERMATINGER • CLERGUE NATIONAL HISTORIC SITE

(705) 759-5443 | old.stone.house@cityssm.on.ca | www.ecnhs.com | 800 Bay St. Sault Ste Marie, ON



EXPERIENCE ART IN ALGOMA



Casson, A.J. (Canadian, 1898-1992) Oxtongue Lake, 1978

Art Gallery of Algoma

10 East Street, Sault Ste. Marie, ON P6A 3C3
705.949.9067
www.artgalleryofalgoma.com

 @artgalleryofalgoma
 @ArtGalleryofAlgoma
 @ArtAlgoma



DISCOVER YOUR HISTORY

AT THE SAULT STE. MARIE MUSEUM

OPEN YEAR ROUND
TUESDAY TO SATURDAY - 10 AM UNTIL 4 PM

690 QUEEN ST. E. SAULT STE. MARIE, ON
(705) 759-7278
@SAULTMUSEUM

SCAN FOR:
WEBSITE
SOCIALS
PODCAST
TICKETS
& MORE



SOO | MRKT

Farmers' Market

*Connecting you to local
farmers, food & artisans!*

Every Saturday

9am - 2pm at 73 Brock St.



For seasonal hours, maps
and visitor info, check out

SooMarket.ca

Community grown
and made with ❤️





Sault Ste. Marie
Canal
National Historic Site

Lieu historique national du
Canal-de-
Sault Ste. Marie

Your adventure awaits

Explore the new visitor
centre, watch the lock in
action, venture out on the
trails or take a site tour.

parks.canada.ca/sault
705-941-6262



L'aventure vous attend

Explorez le nouveau centre
d'accueil, observez l'écluse en
action, aventurez-vous sur les
sentiers, ou faites une visite
guidée du site.

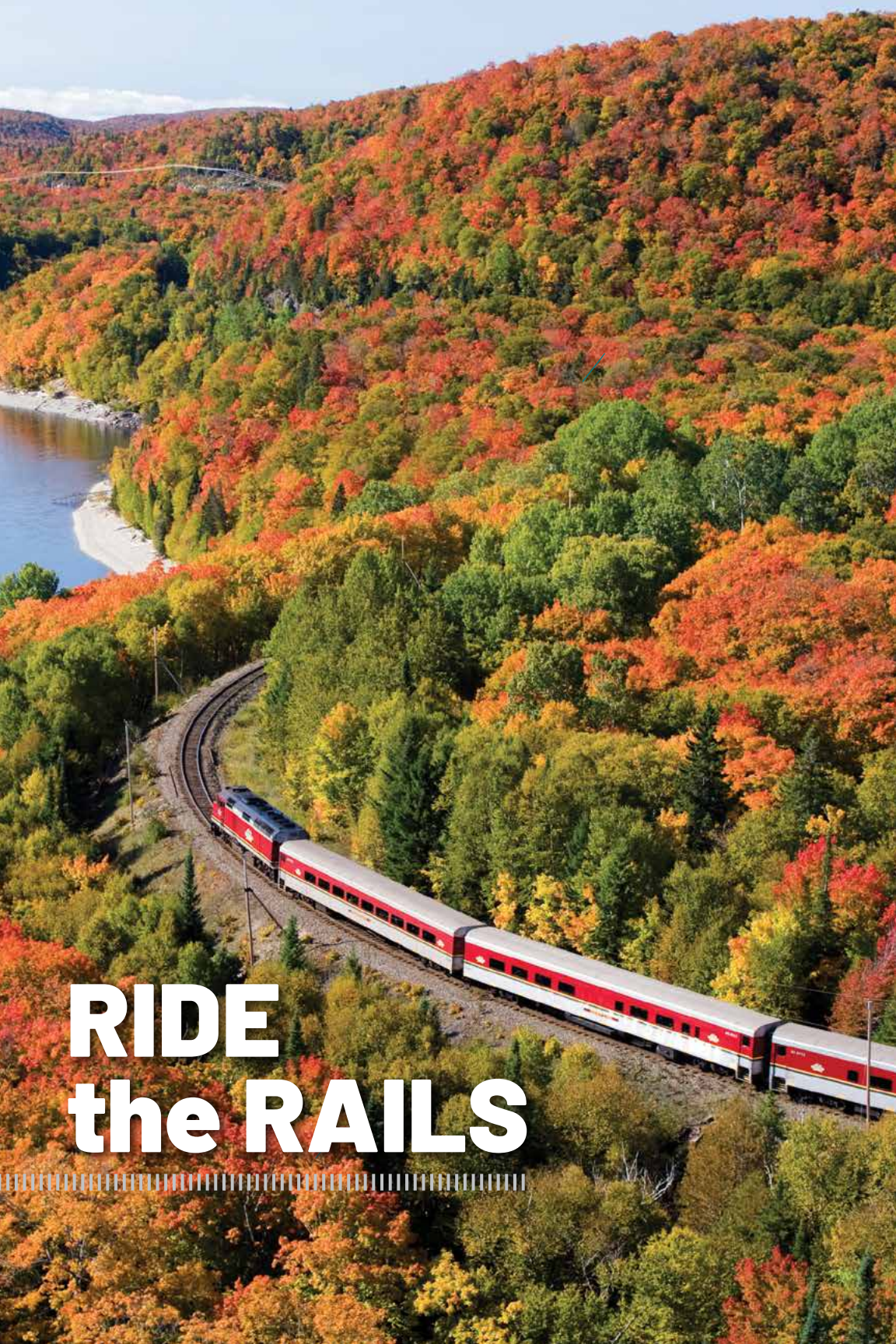
parcs.canada.ca/sault
705-941-6262



Parks
Canada

Parcs
Canada

Canada



RIDE
the RAILS

DEPARTURE POINT Departing from the Agawa Canyon Train Depot at 87 Huron Street, located in the Canal District, this 114-mile excursion truly showcases the rugged beauty that is exclusive to the region. As you settle into your comfortable coach, you can feel the pace of life slow as the ride evokes a sense of simpler times while raising expectations for the journey that lies ahead. Traces of city life soon fade away as the Northern Ontario wilderness begins to unfold outside the large tinted windows. The seemingly unending mixed forests of the Canadian Shield open up as you skirt the shores of northern lakes and rivers, cross towering trestles, and set eyes on the same rugged landscapes and majestic views that inspired the Group of Seven to create some of Canada's most notable works of art.

ON BOARD

GPS COMMENTARY As the train winds its way through this one-of-a-kind terrain, a commentary tells the story of the region. You'll learn about upcoming points of interest as well as some of the rich history of the Ojibway, fur traders, explorers and entrepreneurs that opened up this vast wilderness.

SOUVENIRS From local crafts to unique mementos, the souvenir train car has a treasure trove of gifts to commemorate your travel adventure. Whether you seek a token of the scenic landscapes passing by or a reminder of the rails, the souvenir train car ensures that your voyage leaves an indelible mark. All aboard for a shopping experience as memorable as the ride itself!

CATERING Serving up tasty bites and refreshing drinks as you roll through the scenery. From satisfying wraps and sandwiches to casual bites, the onboard menu keeps your taste buds on track. This train is licensed. Pair your meal with a cold brew or wine, sit back, and enjoy the ride.



THE STONE GARDNER Passengers can now experience the breathtaking beauty of Northern Ontario from a whole new viewpoint. The historic Stone Gardner coach offers an elevated experience. When fully reserved, a personal attendant will serve the guests aboard the Stone Gardener providing unlimited food and beverages during the tour. The coach is divided into two distinct sections. The rear features luxurious theater-style seating, surrounded by large windows that offer panoramic views of the stunning landscapes that inspired Canada's iconic Group of Seven artists. In the front of the coach, guests can unwind in comfortable swivel lounge chairs, enjoying a beverage while engaging in conversation with fellow passengers.



TRAILS IN CANYON PARK



The trails in the park have been developed to provide access to the most scenic spots and to provide a wide range of walking/hiking opportunities. The trails are well maintained and are covered in fine gravel. Park staff roam the trails during the tour and you may usually find them stationed at the Lookout, Bridal Veil or the First Aid Building should you require assistance.

NOTE: Approximate trail times are for a round-trip from the park First Aid Building. Please refrain from smoking on trails.

THE TALUS TRAIL

This trail follows along the base of the west canyon wall. It will lead you past lichen covered talus slopes to the viewing platforms at North and South Black Beaver Falls 175ft/53.3m (30 min return) and Bridal Veil Falls 225ft/68.5m (40 min return). The water flow at all the falls is contingent on runoff from snow and rainfall and can range from raging torrents to thin trickles throughout the tour season.



THE LOOKOUT TRAIL

A challenge for the adventurous and the energetic, this trail ascends 250ft/76.2m (over 300 stairs) above the tracks to provide a breathtaking panoramic view of the canyon.

THE RIVER TRAIL

Follow this gently rolling trail along the banks of the Agawa River to Black Beaver Falls (30 min return) and Bridal Veil Falls (40 min return). The tannin-stained waters of the Agawa River are home to speckled (brook) trout, beaver, otters, mallard and merganser ducks. Picnic tables are located along this route for a private, peaceful lunch.

FIND OUT MORE: Experience all the best the region has to offer. For more information visit saulttourism.com/agawa-train





GROUP OF SEVEN

Several members of Canada's Group of Seven painted in the Algoma region between 1918 and 1923, including Lawren Harris, A.Y. Jackson, Franz Johnston, J.E.H. MacDonald and Arthur Lismer. To gain access to this remote region, they rented a boxcar from the railway. The car was outfitted like a cabin and was shunted to sidings near choice painting locations. From these locations they would set out on foot or canoe to capture this untamed area on canvas. Their paintings brought this vast, rugged and beautiful part of the country to fellow Canadians and the world. Here are some interesting facts and details that you'll find along your journey:

MILE 76: MONGOOSE LAKE

In the fall of 1920 the artists stayed in a cabin on Mongoose Lake instead of the box car to sketch and paint. One of these painting sites was discovered as recently as the fall of 2013.

MILE 92: MONTREAL RIVER/FALLS /HUBERT

The Montreal River attracted MacDonald and he made sketches in the neighbourhood of the falls that resulted in his large canvas, Falls, Montreal River. Among all the painters, he responded most deeply to Algoma, creating a magnificent series of large scale compositions.

MILE 113: AGAWA CANYON

The artists stayed in their boxcar studio in Agawa Canyon to sketch for several days and then using an Algoma Central Railway hand-car, they ventured north and south to sketch and paint.



Lawren Harris, Waterfall, 1919



CANAL DISTRICT^{SSM®}

ESTABLISHED 1895 

Where History Meets Modern Living

Dine With Us



Events at The Machine Shop

Soo Falls Beer



The Rink at The Train Station



canaldistrict.ca

83 Huron St. - Sault Ste. Marie, ON

YOUR ENTERTAINMENT DESTINATION IN SAULT STE. MARIE

Located in the heart of downtown enjoy a mix of exciting slots, table games and electronic tables!

Experience our full-service dining while catching the game on our large screen TVs.

LIVE ENTERTAINMENT!
SATURDAY NIGHTS • 8-11 PM

**SIGN UP FOR MY CLUB
& GET \$5 FREE PLAY!**

MEMBERSHIP IS FREE!



GATEWAY
CASINOS
SAULT STE. MARIE



Play Smart
Knowledge you can bet on.

SAULTSTEMARIE.GATEWAYCASINOS.COM



MY
CLUB
REWARDS

*VISIT GUEST SERVICES OR MYCLUBREWARDS.CA FOR COMPLETE DETAILS ON OUR LOYALTY PROGRAM. OFFER APPLIES TO NEW MEMBERS ONLY. YOU MUST BE 19 YRS OR OLDER TO ENTER THE GAMING FLOOR AND TO PARTICIPATE IN ANY GATEWAY CASINOS' PROMOTIONS.

Savoy's

JEWELLERS

CANADIAN MADE JEWELLERY

15% off with this coupon *

* Conditions apply. Expires November 2025.

2 LOCATIONS

290 Queen St. East - 705.253.9703

The Station Mall - 705.942.3400

www.savoyjewellers.com





HOP-ON HOP-OFF DOUBLE-DECKER CITY TOUR

COMING SUMMER 2025

Once a beloved city attraction from the 1970s to the 1990s, this iconic double-decker bus was left abandoned, waiting to be rediscovered in the backwoods of a local scrapyard. Fully restored to its former glory, it's back and better than ever, offering a brand-new hop-on, hop-off downtown experience.

YOUR TICKET TO ADVENTURE LAUNCHES LATE

MAY This unique sightseeing experience offers the perfect way to see the sites and experience Sault Ste. Marie. The tour operates on a convenient hop-on, hop-off basis, allowing you to step off the bus at designated stops, explore the attractions, and rejoin the tour when you're ready.

A CONVENIENT AND MEMORABLE WAY TO

EXPLORE Whether you're a history buff, a craft beer enthusiast, or simply seeking a unique way to discover Sault Ste. Marie, the Hop-On Hop-Off Double-Decker City Tour blends education, entertainment, and adventure. With its nostalgic charm and modern convenience, this tour is the perfect way to experience the city's rich heritage and vibrant culture.

ROUTE The route will include Sault Ste. Marie's most historic and iconic sites like, The Canadian Bushplane Heritage Centre and Entomica Insectarium, adjacent to the Northern Superior Tap Room.

Other stops include the Sault Ste. Marie Museum, the Downtown Plaza and Soo MRKT, Gateway Casino, the historic Canal District and the Agawa Canyon Train Tour Station and more!

ON BOARD COMMENTARY As the bus navigates the downtown core, passengers will enjoy live commentary detailing the historical significance of key landmarks, from intriguing tidbits about Sault Ste. Marie's past to stories of its pivotal role in Canadian history.

Insider Tip

Discount available when paired with the **Miss Marie Lock Tour** Boat Ticket.



MISS MARIE LOCK TOURS

MISS MARIE LOCK TOUR

Roberta Bondar Pavilion, 65 Foster Drive
saultlocktours.ca

Enjoy a captivating day or evening tour aboard the Miss Marie Lock Tour Boat and explore the scenic wonders of the renowned St. Marys River, including the iconic Canadian and USA International Locks. During this leisurely 90-minute cruise, passengers are treated to an enriching experience with on-board audio commentary, offering fascinating insights into the landscapes along the Canadian and US shoreline.

A tour highlight involves 'locking through' both sets of locks on the Canadian and US sides of the river. Upon crossing to the US side, the Miss Marie gracefully navigates along the shores of our sister City- Sault Saint Marie, Michigan providing upclose views of the Saint Marys Falls Hydropower Plant and a panoramic perspective of the towering international bridge.

As the Miss Marie returns to Canadian waters, passengers delight in the sights of Whitefish and St. Marys Islands, while gaining insights into the area's history, including Algoma Steel, the emergency swing bridge and the Sault Ste. Marie Canal National Historic Site.



Enjoy friendly waves to the impressive 'lakers' of Lake Superior and other pleasure boat riders along this renowned waterway. Alternatively, simply relax and take in the breathtaking sights of this enchanting lock tour.

For an extra touch of magic, opt for a Miss Marie sunset cruise. Indulge in delectable appetizers and expertly crafted cocktails while sailing into the twilight. Revel in an unforgettable moment amidst the mesmerizing hues of the northern setting sun.

MORE INFO

WHEN: Open May- October

WHO: All ages

HOW: Book your tickets online at
saultlocktours.ca

"A great airport overall. Small, friendly staff and super fast check in and out. I park myself in the cafe and grab a coffee every time. Then I set up my laptop and get to work. Have never had anything but good experiences here!"

Passenger Google Review



Sault Ste. Marie Airport
Development Corporation

Escape the Toronto Hustle, Fly to Sault Ste. Marie in Just Over an Hour!



JD AERO



porter



SAULT
COLLEGE



Bearskin Airlines
A DIVISION OF PERIMETER AVIATION

AIR CANADA



Hogan's
Homestead
Airport Café



@saultairport

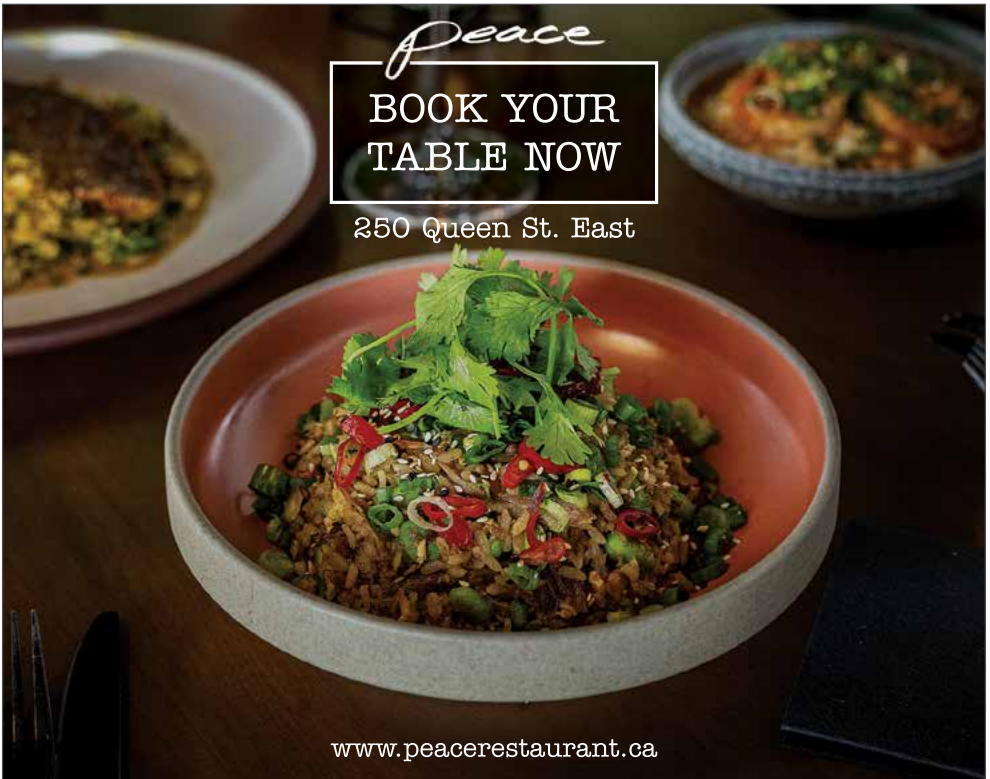


www.saultairport.com

Peace

BOOK YOUR
TABLE NOW

250 Queen St. East



www.peacerestaurant.ca



THE SAULT STE. MARIE CANAL

NATIONAL HISTORIC SITE

THE SAULT STE. MARIE CANAL NATIONAL HISTORIC SITE

1 Canal Drive | parksCanada.ca/sault

OPEN MID-MAY TO MID-OCTOBER Just a short distance from downtown Sault Ste. Marie, discover an urban oasis at the Sault Ste. Marie Canal National Historic Site. Once a part of the busiest commercial lock system in the world, today, the canal is a premiere tourist attraction. While on-site, visitors can watch the lock in action with boats rising from Lake Huron to Lake Superior, venture out on the trails by foot or by bike, or take a guided site tour.

START YOUR VISIT AT THE VISITOR CENTRE

Located in the restored historic Stores Building, the Visitor Centre is the ideal starting point for your on-site exploration. Check out the touch-screen navigation station to plan your site visit, begin the new Watchman's Route, or explore the exhibit space next door. The exhibit space features informative panels and displays showcasing the construction of the canal and the profound impact this development had on the Anishinaabe and Métis People.

FAT BIKE RENTALS Rentals are available on site from May to October.

LEARN ABOUT THE EMERGENCY SWING DAM

Designed and built by the Dominion Bridge Company in 1896, the structure provides a method to reduce the water flow in the canal in the event of an accident. It was one of nine built in the world and the only one remaining. It was also the only swing dam to operate under extreme emergency conditions during the accident of 1909.

OUTDOOR ACTIVITIES Spread across North & South St. Mary's Island these new experiences share Indigenous history and teachings through the voices of First Nation & Métis People.

1. Through the **Views To The Past** plaques, you will learn about the way of life after the canal was built.
2. Let the **Watchman** card be your guide as you explore the site, finding each time clock to stamp your card. This self-guided experience takes you on an outdoor tour of all the buildings on-site. Visit the Visitor's Centre and pick up your Watchman's card.





ENTOMICA INSECTARIUM

ENTOMICA INSECTARIUM

entomica.com | 50 Pim Street

Step into the fascinating world of Entomica, a Natural History Museum and one of Canada's four exclusive Insectariums. Here, visitors have a unique opportunity to interact with some of the world's most intriguing species of insects, reptiles, and amphibians. Located inside the Bushplane Museum, visitors can purchase an all-access Adventure Pass to visit both the Museum and Entomica.



Tree Frog

Meet the Critters



NAME: WILLY WONKA

SPECIES: Veiled Chameleon
(*Chamaeleo calytratus*)

A native of Saudi Arabia, Willy Wonka is rather famous at Entomica due to his friendly nature. Typically, chameleons enjoy the quiet and solitude of their enclosure, but if Willy Wonka isn't sunning under his heat lamp, he'd rather be out greeting the guests.



NAME: PICASSO

SPECIES: Picasso Stick Insect
(*Calvisia kneubuehleri*)

This native to Vietnam insect was only discovered in 2017. They love the tropical forest temperatures and are quick flyers. Scientists are learning more about them every day.

CANADIAN BUSHPLANE HERITAGE CENTRE

Bushplane Day
September 20, 2025

CANADIAN BUSHPLANE HERITAGE CENTRE

bushplane.com | 50 Pim Street

The CBHC is the only facility in North America dedicated to the history of Bush Flying and Forest Fire Management. This interactive museum is on site of the original 64,000-square-foot hangar where water bombing first began. Take in over 24 aircraft, a flight adventure simulator, a theatre with a firefighting adventure, and an interactive Children's Flight Centre. Kids can climb a fire tower and sit in the cockpit of a vintage bush plane. Fun for all ages.



JANE GOODALL: REASONS FOR HOPE

The world's most renowned living ethologist and environmentalist, Jane Goodall, takes viewers on a heartening global journey. "Reasons for Hope" is a documentary with a message that centers on Jane's four pillars of hope, which signify a tremendous sense of optimism for the future: the remarkable capabilities of the human mind, the resilience of nature, the strength and commitment of young people, and the unconquerable human spirit. Jane Goodall has transformed our perspective on the world we inhabit. Embark on this voyage of inspiration and hope alongside her.

DAILY GUIDED TOURS & GIFT SHOP SOUVENIRS

Hop on board for a captivating journey through aviation history with a one-hour guided tour. From the pioneering days of the Silver Dart to the modern marvel of the CL-215 waterbomber, an engaging guide will unfold the fascinating evolution of bush flying. Following the tour, brace yourself for an exhilarating cinematic experience with "Wildfires!", a 3D movie that immerses you in the thrilling adventures of aerial firefighting. Be sure to explore Wings n' Airplane Things, a well-stocked gift shop offering treasures from educational children's toys to quality apparel, unique souvenirs, and local bushplane-themed art.



ERMATINGER CLERGUE NATIONAL HISTORIC SITE & DISCOVERY CENTRE

ERMATINGER CLERGUE NATIONAL HISTORIC SITE & DISCOVERY CENTRE

800 Bay Street | ecnhs.com

The Ermatinger Clergue National Historic Site is a charming year-round cultural destination. Experience the interactive Heritage Discovery Centre and tour two of the oldest stone buildings northwest of Toronto—the Ermatinger Old Stone House and the Clergue Blockhouse. Immerse yourself in history through numerous exhibits and interactive features thoughtfully curated to make the past come alive for all.

Explore the grounds of this historic site to encounter orchids, diverse crops, and flourishing gardens showcasing medicinal and culinary herbs. Fresh produce grown on the site is used for culinary events and savory treats baked in the summer kitchen. The Ermatinger Clergue National Historic Site promises a rich and engaging experience, seamlessly blending stories of the past with the vibrancy of the present.

THE BEAVER TURNS 50! Already an important cultural figure for many Indigenous groups, the beaver has been recognized as a symbol representing Canada since the early 17th century, when beaver pelts were a fundamental part of the economy of New France. On March 24, 1975, Parliament designated the beaver as an official symbol of Canada's sovereignty.

HARVEST FEST & FALL RENDEZVOUS

Experience 1812-era re-enactors bringing history to life and commemorating the War of 1812. Personas on-site depict the Women of the Era, Voyageurs, Coureur du Bois, and Indigenous and Scottish alliances. The festival features live demonstrations of cannon and musket firing, music, and food celebrating the fall harvest.



Harvest Fest & Fall Rendezvous
September 24-27, 2025

THE POST GIFT SHOP Visit the Post Gift Shop on site and browse an assortment of Canadian souvenirs, maple products, branded Sault Ste. Marie souvenirs and many other unique locally made products.



DID YOU KNOW?
**100
YEARS
AGO**

100 years ago in 1925 the Ermatinger Old Stone House was the YWCA, and residence for girls & young women.

SAULT STE. MARIE MUSEUM



SAULT STE. MARIE MUSEUM

690 Queen Street East | saultmuseum.ca

The Sault Ste. Marie Museum welcomes visitors year-round to explore three floors of exhibition galleries that depict the heritage of Sault Ste. Marie. The main non-rotating gallery on the first floor of the Museum is the **Walter Wallace Military Galley**. It contains a variety of artifacts and information centered around both World Wars, as well as a timeline showing the history of the Sault's local regiment.

On the second floor of the Museum is the **Skylight Gallery**, a large, walk-around exhibit showing the history of the Sault. This spans from the days of early civilization to the city Sault Ste. Marie became



Through the Port Hole
Edmund Fitzgerald model

in the 1900s. There are many artifacts throughout the years, as well as information on important local figures and events. The Skylight Gallery is a room to visit if you are curious about the history of Sault Ste. Marie.

The third floor of the Museum has exhibits dedicated to recreation, one of which is the **"Through the Port Hole"**. This exhibit highlights the history of Great Lakes maritime travel with a display of early cruise ships, a brief overview of the Locks, and detailed scale models of the Edmund Fitzgerald and the Chicora. A replica of the "Sisters Light" lighthouse is also on display.



Quattro Hotel & Conference Centre

an Ascend Collection Hotel by Choice Hotels

Complimentary hot continental breakfast, free WiFi, indoor heated salt water pool and sauna, in-room microwave & fridge, Keurig coffee machine, premium bedding and upgraded amenities.

QUATTRO VINOTECCA - 3 Diamond Onsite Restaurant with modern surroundings and an upbeat vibe.

PIZZATECCA - Takeout and delivery, specializing in family favourites, comfort food, and healthy choices.

THE GREENHOUSE SPA - Premier Ranked Spa & Services. Escape for an hour, or a full, luxurious day. The spa professionals will relax and rejuvenate your mind and body with the finest services and treatments available.



229 Great Northern Road, Sault Ste. Marie, Ontario
1.800.563.7262 or 705.942.2500 • hotel.frontdesk@quattrossm.com

WWW.QUATTROSSM.COM



the greenhouse SPA



ART GALLERY OF ALGOMA

CELEBRATING
50
YEARS

ART GALLERY OF ALGOMA

10 East Street | artgalleryofalgoma.com

50 AMAZING YEARS In the summer of 1975, the Art Gallery of Algoma was officially incorporated. Over the next five decades the gallery grew tremendously and became part of life for many generations. The permanent collection of the AGA is now over 5,000 artworks from many by well-known Canadian artists. Visitors can view four exhibition spaces featuring a variety of exhibits including local art and original works from the Group of Seven.

SCULPTURE PARK The natural beauty of the waterfront and the city's boardwalk makes a perfect backdrop for the Elsie Savoie Sculpture Park.

GROUP OF SEVEN The Group of Seven are iconic landscape painters who are closely connected to the Algoma Region. This group of Canadian artists became revolutionary for their time when they started developing a new style of painting in Canada from 1920 to 1933. Influenced by the Canadian landscape, their work, which often featured rugged, uninhabited landscapes, played a significant role in shaping the way Canadians viewed their country and its wilderness. The group's work continues to be celebrated and is considered some of the most important in Canadian art history. Learn more about them and their unique style of painting Northern Ontario's beauty and their contribution to the formation of Canadian art history, by visiting the Art Gallery of Algoma or MomentsOfAlgoma.com

TOURS

The Art Gallery of Algoma offers a number of tours and customized experiences. Please contact the AGA directly to book in advance.

GIFT SHOP

The Gallery Shop offers a wide selection of gifts made by local artists, as well as the Group of Seven items.





FARMS & MARKETS

ALGOMA MAKERS MARKET

The Machine Shop

algomamakersmarket.square.site

Discover a vibrant pop-up market supporting local small businesses with 40+ makers offering sweet treats, apparel, and art. Open seasonally every second Saturday under the roof at the Canal District.

HOGAN'S HOMESTEAD SUGAR SHACK

1157 Thielman Road, Goulais River, Ontario

hoganshomestead.ca

Hogan's Homestead is the third-largest maple producer in the region and taps over 30,000 trees. Take a tour of their production facility, and learn how to make maple syrup. Visit the Gift Shop in the Frontier Village at 1340 Great Northern Road or the Maple Boutique inside the Soo MRKT for more than just maple syrup.

NEAL'S COUNTRY FARM AND MARKET

1764 Second Line West

facebook.com/nealscountryfarmandmarket

Embark on a delightful journey at a family-run market offering an array of fresh, locally sourced, and responsibly grown treasures – from produce and eggs to meats and beyond. Indulge in quality goods!



SOO MRKT

73 Brock Street | Saturdays, 9am to 2 pm

soomarket.ca

The Sault's go-to hub for all things Northern Ontario. This lively spot in downtown Sault Ste. Marie features over 40 local vendors with treats and handmade wonders. A farmers' market that's not just about fresh veggies, but also about supporting local Canadian food heroes, crafters, and artists.

THOMSON FARMS CIDER & WINERY

4057 Third Line West

thomsonfarms.ca

Dive into summer with sunlit strawberry picking or enjoy an autumn adventure at Thomson Farms Pumpkin Patch. Enjoy tractor rides, corn mazes, and everyone's favourite – the Corn Cannon! Discover seasonal delights in the Farm Store – craft ciders, fruit wines, jams, and freshly made treats from a bountiful harvest.



THE CANAL DISTRICT

THE CANAL DISTRICT

canaldistrictssm.ca | 705-759-9090

Once a key industrial part of Sault Ste. Marie, the Canal District has been revitalized into a dynamic destination that blends historic charm with modern attractions. The district was originally a hub of industrial activity. Today, the Canal District is a vibrant area that celebrates its heritage while offering visitors an array of activities, dining, and entertainment. Its historic buildings, including the iconic Machine Shop, feature Romanesque Revival architecture and a rich history that harkens back to the late 19th century. With the **Agawa Canyon Tour Train** departing right from the property, visitors can enjoy the beauty of Northern Ontario's wilderness and then stop by the Canal District for a bite to eat or a drink to complete their journey. Whether you're strolling through the district, exploring its many dining options, or enjoying the many events hosted here, the Canal District provides an unforgettable experience for tourists.

THE MACHINE SHOP A cornerstone of the Canal District, is a stunning example of 19th-century industrial architecture reimagined for the modern era. Built in 1899, this former hub of manufacturing for Francis H. Clergue's industrial empire has been restored to retain its historic character while serving as a versatile space for events, dining, and cultural gatherings. From weddings and concerts to community markets and exhibitions, the Machine Shop is the beating heart of the Canal District.

DINING IN THE CANAL DISTRICT

The Mill Steakhouse + Wine Bar Indulge in fine dining with 45-day aged AAA ribeyes to premium

New York striploin, each dish is crafted with fresh ingredients and served in an elegant yet welcoming atmosphere. Don't miss the monthly chef's feature or the signature crème brûlée.

The Boiler Room Relax in this, family-friendly pizzeria where wood-fired pizzas are topped with fresh ingredients. Next to the Boiler Room, enjoy the cozy steampunk vibe at The Steamfitters Lounge; a unique space where you can enjoy the wood-fired menu.

The Blockhouse Pub A perfect casual dining spot that serves up hearty portions, pub favorites, and all-day breakfast in a bright and welcoming space. Stop by for a delicious meal or a quick bite and coffee.

Elliott's Ice Cream at The Gelato Mill Treat yourself to handcrafted gelato, Elliott's famous ice cream and soft serve, alongside an array of baked goods and fresh Starbucks coffee. The Gelato Mill's cozy atmosphere makes it a sweet spot for a snack or dessert, all-year round.

SHOPPING IN THE CANAL DISTRICT

THE OUTFITTERS Inside the Train Station building, this shop offers something for everyone, from climbing gear to Indigenous art by local creators Thomas Sinclair and John Laford. While you're here, climb the indoor rock wall, fun for all ages.

CRAFT BEER IN THE CANAL DISTRICT

SOO FALLS BREWING COMPANY Experience locally brewed craft beer. This brewery showcases the creativity and passion of Northern Ontario. Enjoy a pint in the heart of the Canal District or stop by The Blockhouse Pub to stock up on some cans!

DOWNTOWN PLAZA



DOWNTOWN PLAZA

526 Bay Street

saultstemarie.ca/downtownplaza

The Plaza in downtown Sault Ste. Marie adds a vital and vibrant community hub. The plaza is full of activities designed to attract visitors of all ages and ability levels.

- ✓ SKATING RINK (WINTER)
- ✓ WATER FEATURE (SUMMER)
- ✓ OUTDOOR FIRE PITS
- ✓ FOOD AND BEVERAGE
- ✓ STAGE WITH LARGE OUTDOOR SCREEN
- ✓ PLAY ZONE
- ✓ LIGHTING DISPLAYS
- ✓ PUBLIC WASHROOMS AND CHANGE AREA



WALKING TOUR OF THE MURALS

Sault Ste. Marie has **19 culturally significant murals** created by a variety of artists, and all can be found in the downtown core. Take a 2.5km stroll to discover them all, and while you do, load up our Travel Inspiration blog post on your phone or tablet where you'll be able to learn more about the story behind each work of art, the artist's motivations and their techniques.

You'll find murals from local artists, indigenous artists and even world-renowned artists, all within a short distance of each other.

For a full list of murals visit our [website](#) by using this QR code



COYOTES BY FATSPATROL



ROLLING PICTURES HORSE BY JERRY RUGG AKA BIRDO



BATTLE FOR THE SEVEN CLANS BY THOMAS SINCLAIR



CHANGE TIDES BY TYLER TOEWS



Downtown Sault Ste. Marie

CANADA
U.S.A.

A PERFECT PAIRING: GREAT FOOD + EPIC VIEWS IN SAULT STE. MARIE

by Gabrielle Mueller (Culinary Tourism Alliance)

If you ask us, Sault Ste. Marie has some of the best views in the whole province. Sweeping, crystal clear waters from Lake Superior, epic sunsets on Lake Huron and loads of waterfront dining along the St Marys River mean you're never far from a beautiful vista.

OUR FAVOURITE FOOD + VIEW PAIRINGS

On top of that, savoury eats and delicious, sweet treats also call this sliver of the province home and can't be missed. So? We've paired up our favourites in both categories for the ultimate pairing of great food and epic views.

GEORGIE'S SHAWARMA + CLERGUE PARK

Where: Georgie's Shawarma
75 Elgin St. & Clergue Park - Bay St. & East St.

Georgie's Shawarma in Sault Ste. Marie specializes in authentic and flavourful Syrian cuisine and damn is it ever good. Their signature dish is (you

guessed it) chicken shawarma marinated in house and wrapped in a fluffy Saj bread that will make your mouth water. They're also home to some other great dishes like Za'atar manakeesh, a house made bread with all kinds of herbs and spices and falafel fritters.

We opted for the traditional shawarma, untraditional shawarma (with garlic sauce, hummus, lettuce, tomato, onion, pickled turnip, and cucumber) and a falafel wrap with bright pickled onions and sumac.

You can definitely eat inside Georgie's and enjoy the cozy atmosphere but on a nice day, don't resist the urge to take in The Soo's extensive waterfront! We ordered our wraps to go and took them down to Clergue Park where you can sit in lush grass or on a picnic table and enjoy the views of the St. Marys River. Watch as boats drive by and folks do yoga in the park. Most importantly, take in that stunning view as you bite your way through your dish!



BANNOCK BITES + HIAWATHA PARK

Where: A Walk Among the Trees Tour of Hiawatha Park - 780 Landslide Rd.

Walk Among the Trees is an Indigenous-owned and led tour company in The Soo that makes for the perfect addition to any trip there. Led by Mario and Cheyenne, their Hiawatha Park tour takes you through the stunning grounds to a small waterfall on site.

As you climb, Mario and Cheyenne will talk about their family's heritage including the history of residential schools as well as their work preserving their history for future generations. They've created a safe space to ask questions and learn from their expansive knowledge and passion for sharing.

After your walk, continue the conversation as you enjoy some bannock bites (round pieces of fry bread in cinnamon sugar) alongside steaming mugs of cedar tea and Cheyenne's own blueberry sauce (depending on the season). This sauce is made from wild blueberries picked by her family north of Sault Ste. Marie.

Nothing sparks a conversation like great food and we think you'll agree this will have you feeling relaxed and welcome. You can book experiences with Walk Among the Trees and discover some of the other great tours they offer!

CRAFT BEER + ST. MARYS RIVER VIEWS

Where: Northern Superior Brewing Company
50 Pim St.

Sip on craft beer made with recipes that are over 100 years old! Built inside an old MNR garage, this brewery has become one of the beating hearts of The Soo and serves up refreshing pints for beer lovers and those just getting into the craft scene alike. It's a great place to gather with friends and try something new.

We loved their Northern Lights all natural light-pilsner as well as their best-seller— the Northern Superior Lager. Both are refreshing and crisp but if you want to really get a sense of the range of beers crafted here, we recommend opting for a flight. Pair that up with their in-house charcuterie board for an ideal afternoon snack.

Looking for those views? Head up to the brewery's rooftop patio at night to set your sights on the Soo's downtown in all its lit up glory alongside boats cruising down the river. It's pretty spectacular.

For a full version of the article visit
ontarioculinary.com

PERFECT **PATIOS**



Q Patio

Patios are the perfect way to relax and take in our city's incredible dining experiences. Many have breathtaking views of the city skyline and the scenic St. Marys River. Whether you're craving casual bites, local brews, or a lively atmosphere, our patios have something for everyone.



Gino's Fired Up Kitchen

Top
Patios**EMBERS ON THE RIDGE**crimsonridge.com/embers

On the Crimson Ridge golf course

ERNIE'S COFFEE SHOP[instagram.com/ernies.coffee.shop](https://www.instagram.com/ernies.coffee.shop)

On Queen Street East

FLUID BOARDWALK PATIO + GRILL[facebook.com/fluidboardwalkpatio](https://www.facebook.com/fluidboardwalkpatio)

The Delta Hotel waterfront

FRATELLI'S KITCHEN & PIZZERIAfratellisrestaurant.ca

Close to big box store shopping

GINO'S FIRED UP KITCHENginosfiredup.ca

Largest patio in town

MANE STREET CAFÉmanestreetco.com/cafe-lounge

Close to downtown shopping

MONTANA'S BBQ & BARmontanas.ca

Views of the freighters

MULLIGANSmulligansirishpub.ca

Views of St. Marys River

THE BLOCKHOUSE PUBcanaldistrict.ca/dining/blockhouse-pub

Close to Agawa Canyon Train Station

THE PATIO AT THE MACHINE SHOPcanaldistrict.ca/dining/the-patio

In the historic Canal District

THE TAP ROOMnorthernsuperior.org/taproom

Four Season Patio

Q PATIOquattrossm.com/pizzatecca

Inside the Quattro Hotel Courtyard



Montana's BBQ & Bar



Fluid Boardwalk Patio + Grill



Main Street Café



GUIDED INDIGENOUS TOURS

Métis Tours

MÉTIS TOURS

Learn about the Métis connection to Sault Ste. Marie and the St. Marys River through a Métis-led cultural and ecology tour. The Walking and Walking/Paddling Tours will begin at the new Sault Ste. Marie Métis Centre (136 John St). A Métis Interpretive guide will lead tours that connect historic and community points of interest between the Centre and the St. Marys River. For those on a Walking/Paddling Tour, visitors will also board the "Big Canoe" at Parks Canada to travel the St. Marys River learning about the Métis River Lots and community life fishing at the rapids (group tours only).

info@superiorconservancy.org
metistours.com



Thrive
Tours

THRIVE TOURS

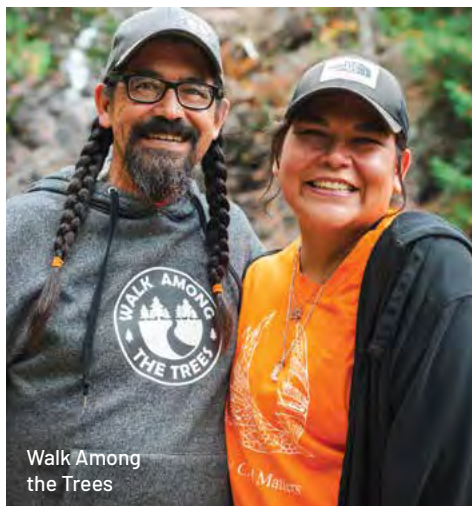
Thrive Tours is a locally owned and operated guided ecotourism company that offers water and land based experiences designed to connect people with Mother Earth's offerings. Reconnect with nature with quality experiences and adventure through guided canoe, kayak, hiking, snowshoeing, and year-round camping. Contact Brad and Amanda to create your uniquely customized itinerary. 705-862-1558 | thrivetours.com

DAYS OF RECOGNITION

NATIONAL INDIGENOUS PEOPLES DAY

June 21st

June 21, the summer solstice, is National Indigenous Peoples Day. This is a day for all Canadians to recognize and celebrate the heritage, diverse cultures and outstanding contributions of First Nations, Inuit and Métis peoples. Local events are held as a way to promote cross-multiculturalism both in Sault Ste. Marie and across Canada.

Walk Among
the Trees

WALK AMONG THE TREES

Walk Among The Trees specializes in relaxed, 2 to 3 hour hiking/walking tours where they share Indigenous teachings, culture, ceremony and language. These tours are suitable for just about everyone, providing restorative experiences in nature with traditional knowledge that's been passed down from generation to generation through stories and deep environmental connections.

Finishing up your tour with Walk Among the Trees is best done by sharing traditional foods together. Mario and Cheyenne welcome you to share stories, immerse yourself in culture and nourish your soul at the end of each tour. Learn about the significance of strawberries, blueberries, bannock, and wild rice before leaving with a heartfelt farewell. 705-975-3086 | walkamongthetrees.com

NATIONAL DAY FOR TRUTH AND RECONCILIATION

September 30th

Each year, September 30 marks the National Day for Truth and Reconciliation. This day honours the children who never returned home and Survivors of residential schools, as well as their families and communities. Join in various activities hosted in Baawating taking place on this day to commemorate the history and legacy of residential schools.



Whitefish Island



Ojibway Park Trail

BATCHEWANA FIRST NATION WHITEFISH ISLAND RESERVE

A significant island with thousands of years of history lies just below the International Bridge-Batchewana First Nation Whitefish Island Reserve. The Attikamek & Whitefish Island Trails located on the Island are an excellent family friendly option for all to enjoy. Plan a visit to take in the beauty, learn about the significant history, listen to the calming waters running in the rapids and watch animals thrive in their natural habitats. The Island is home to many migratory birds, waterfowl, fox, beaver, muskrat, fish, reptiles, eagles, owls, herons, and osprey. Preservation of the land and water is extremely important. Please practice responsible stewardship and leave with nothing from the island except an amazing outdoor experience.

THE GARDEN RIVER OJIBWAY PARK TRAIL

The Garden River Ojibway Park Trail is a beautiful hiking trail located in Garden River First Nation Reserve on Highway 17B. The trail offers visitors an opportunity to explore the natural beauty and cultural significance of the region while winding through a diverse landscape that encompasses lush forests, meadows, wetlands, and the picturesque Garden River itself. The trail is known for its tranquility and serenity, providing hikers with a peaceful escape into nature. When visiting the Garden River Ojibway Park Trail, it is essential to respect the land, its inhabitants, and cultural significance. Follow any rules or regulations put in place by the Garden River First Nation and make sure to leave no trace, preserving the trail's natural beauty for future generations to enjoy.

705-248-1520 | ojibwaypark.ca



Gathering at the Rapids Pow Wow



Métis Cultural Centre

SAULT STE. MARIE MÉTIS CULTURAL CENTRE

Upon completion the Sault Ste. Marie Métis Cultural Centre will make history as the first of its kind in Ontario. The Centre will be home to a collection of over 500 artifacts, hundreds of photographs, over 100 hours of oral history recordings and 1000 documents of historical relevance to the Sault Ste. Marie Métis community and the Métis Nation. Artifacts will be displayed in one of three, exhibits—a permanent exhibit on the history of the Métis village, a permanent exhibit celebrating the 20th anniversary of the Powley Case, and a rotating exhibit space for seasonal and special exhibits. The Centre will host a creative makers space which will feature workshops and materials promoting Métis culture and arts, such as beadwork, sewing, weaving, carving, quill work etc.

Gathering at the Rapids Pow Wow
February 14–15, 2026

GATHERING AT THE RAPIDS POW WOW

Experience Anishinaabe culture at the annual Gathering at the Rapids Pow Wow, a cornerstone event that unites communities in celebration of Indigenous traditions. Hosted by Algoma University, this gathering brings together competitive drumming, singing, and dancing, providing a platform for Indigenous artisans, craftsmen, and traders to display their work. The annual Gathering at the Rapids Pow Wow is more than an event—it's a powerful celebration of Anishinaabe culture, resilience, and community.

**JUNE 20TH
& 21ST, 2025**



- LIVE MUSIC
- FOOD VENDORS
- 13 VEHICLE AWARD CATEGORIES
- MORE THAN 350 CARS AND MOTORCYCLES REGISTERED IN 2024
- ALL MAKES MODELS & YEARS WELCOME

JOIN THE RIDE!

**FOR MORE INFORMATION & REGISTRATION, VISIT:
www.queenstreetcruise.com**





EVENTS IN THE SAULT



SUMMER
SUN



WINTER
CHILL

Whether you're soaking up the summer sun or embracing the winter chill, Sault Ste. Marie's biggest events offer unforgettable experiences all year long!



ROTARY FEST & RIBFEST Rotary Fest is the Sault's ultimate summer festival. Spanning three days in July, this festival transforms downtown into an action-packed hub full of excitement. The festival hosts a community parade, live music across three stages, family activities, games and events, and a vendor area for outdoor shopping. **Ribfest** remains a crowd favourite, where guests can enjoy barbecued ribs — with a side of coleslaw and cornbread, of course — ribbers compete for the most loved ribs!

rotaryfest.com

[f](https://www.facebook.com/rotaryfest) [i](https://www.instagram.com/rotaryfest) @rotaryfest

BON SOO WINTER CARNIVAL The Ultimate Northern Ontario Winter Experience. For over 62 years, the Bon Soo Winter Carnival and its beloved mascot Mr. Bon Soo, have brought chills and thrills to our city in the month of February. Northern Ontario's largest winter festival lasts nine days and boasts fun events for all ages, including the renowned Polar Bear Plunge into the icy cold waters of the St. Marys River! Learn more about Bon Soo at:

bonsoo.on.ca

[f](https://www.facebook.com/MrBonSoo) [i](https://www.instagram.com/MrBonSoo) @MrBonSoo

#OUTSIDEOFEXPECTED



SOO GREYHOUNDS

Join the fun at a **Soo Greyhounds hockey game**, where stars like Gretzky and Thornton once took the ice. The GFL Memorial Gardens has an electric atmosphere on game nights, packed with fans of all ages.

ohl.ca/ohl-greyhounds/

[f](#) [@ohlhoundpower](#)

RUNWAY PARK

For those feeling the need for speed, be sure to check **Runway Park**, where snow machines and dirt bikes take to the tracks.

runwaypark.pro

[f](#) [@runwaypark705](#)

FROZEN TOE

Bundle Up! **The Frozen Toe Fat Bike Race** is the ultimate chill challenge for frosty thrill-seekers! Brave bikers gear up to pedal through snowy trails and icy winds, with their breath freezing faster than their tires can grip. This race isn't just about speed, it's about who can endure the cold and conquer the elements with frozen fingers — and toes! This race is for all skill levels.

redpinetourscanada.com/frozentoe

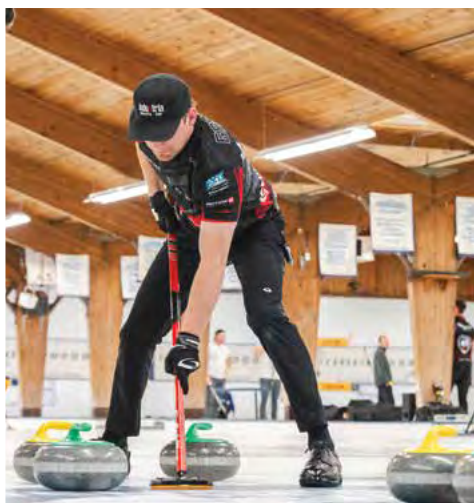
[f](#) [@frozentoeefest](#)



HENDERSON METAL FALL CLASSIC

Top men's curling rinks from around the world compete head-to-head in **Sault Ste. Marie's premier curling tournament**. The Soo Curlers Association hosts this four-day World Curling Tour event and attracts top-ranked international teams competing in a triple knockout format. With one of the largest cash prizes in Canada, competition is fierce. Curling fans — you don't want to miss this!

soocurlers.com/soocurlers-fall-classic



SUMMER
SUN

COMMUNITY STRONG RACE WEEKEND

Alongside the full Boston Marathon qualifier, this race weekend also hosts a **½ marathon, 10km run, 5km colour fun run, and children's run** through downtown. The fast and flat course is perfect for personal bests and runners trying out new distances or routes. For those looking for more of a physical endurance challenge, the 24-hour Special Forces Challenge is perfect—but sign up early—it's known to sell out fast!

saultstrong.ca

  @communitystrong

S00 200

200 Miles of Pure Brutality: Are You Ready for the Ultimate Challenge? The S00 200 isn't just a race; it's the **trail running challenge** that will leave you questioning your sanity and pushing your limits. This 200-mile test of physical and mental endurance will push you further than ever before. It's you versus the wild terrain of the Northern Canadian Shield, relentless conditions, and a course that doesn't care about excuses.

sinistersports.ca/s00200

SALTY MARIE

Rise and brine! The Salty Marie is Sault Ste. Marie's choice **mountain bike and trail running weekend**. This festival includes races, but make no mistake—it is not just for the competitive folks! The Salty Marie is a fun-fueled event for racers as well as cruisers and anyone looking to have a good time on the trails. Cycle or run, 10k, 25k or try the aptly named 50k Big Pickle! Shorter distances and trails are perfect for kids.

redpinetourscanada.com/thesaltymarie

  @thesaltymarie

ST. MARYS RIVER WALLEYE CUP

St. Mary's River is known for **world-class fishing** and trophy sized fish. Home to a variety of species, including salmon, trout, northern pike, bass, and walleye, the St. Mary's is a fishing haven. Anglers on the Northern Ontario Walleye Trail hit the river in August for this annual walleye competition in hunt of monster-weight fish and big prizes!

smrwc.ca



HOBBY AND LEISURE



QUEEN STREET CRUISE

Check out hundreds of **classic cars and trucks** as they cruise through downtown. Lining Sault Ste. Marie's waterfront, the show is on display for a full weekend of fun, live bands, local beers, vendors and food. This event is an excellent viewing experience for all ages. Impressive rides and proud owners will welcome you to stop and admire their prized possessions.

queenstreetcruise.com

[f](#) [ig](#) @queenstreetcruise

FESTIVAL OF BEER & MAPLE WEEKEND

Springtime in the Sault is a time to celebrate great food, drinks, and good times! Start the season with **Hogan's Homestead's Maple Weekend**, where you can indulge in fluffy pancakes and sausage drenched in rich, locally-made maple syrup. Just as the maple syrup runs out, the **Annual Festival of Beer** takes over, bringing together breweries from across Ontario. Sip on local and regional brews while soaking up the sun and enjoying quality time with friends. Whether it's sweet maple syrup or craft beer, you're never far from a good time in the Sault!

hoganshomestead.ca/maple-weekend

[f](#) [ig](#) @ssmfestofbeer

COPPA GIOVANNI SOCCER TOURNAMENT & ITALIAN FEST

An Italian festival and soccer tournament all in one weekend! This **World Cup-style soccer tournament** features multiple divisions for players and activities for the family throughout the day. Friends, families, and players are all invited to join the fun at the Italian Festival at the Roberta Bondar Pavilion featuring live entertainment and delicious treats. Enjoy some of the very best Italian bites this side of Rome.

coppagiovanni.com

POUTINE FEAST

Canada's **touring festival** brings poutine vendors to the Sault's downtown plaza. Specialty poutines and unique toppings keep things interesting, mixing new unexpected flavours. Enjoy live music, cold brews, and hard seltzers. For the kids, a water feature and climbing area, makes this venue the perfect location to try a Canadian favourite treat.

poutinefeast.com

CULINARY



ARTS AND CULTURE



Sault Ste. Marie is a vibrant hub for art, culture, and history. From local galleries to historic sites, there's always something to inspire. Explore the rich past and captivating exhibits at the Bushplane Museum, especially during **Bushplane Day**, where aviation history comes to life. Step back in time at the **Ermatinger Clergue National Historic Site** during Fall Rendezvous, an event that celebrates the region's heritage with immersive experiences. If visiting in the fall, check out the **Algoma Fall Festival**, a month-long event in October, celebrating excellence in the visual and performing arts.

bushplane.com

ecnhs.com

algomafallfestival.com

PRIDE FEST

In the summer, **Pridefest** events promote inclusion with the 2SLGBTQIA+ community and are celebrated with week-long festivities, including a parade, educational sessions, and activities for all ages.

saultpride.ca

PRIDE CRUISE

The Sault's **Annual Pride Cruise** is an epic party on the water, which brings together all things drag! Music, dancing, charisma, uniqueness, nerve and talent – expect all of that and more aboard the Miss Marie cruise boat. Showcasing local talent and a headlining act, guests enjoy an evening of entertainment, socializing, food, drinks and scenic views of the St. Marys River.

saulttourism.com/rainbow-boat

CANADIAN MULTICULTURALISM DAY

Canadian **Multiculturalism Day** is celebrated in June and honors the many cultural communities that help build a strong and vibrant Canadian society. This inclusive event offers a full day celebrating culture with regalia, food, music, information, speeches, and demonstrations from local cultural groups.

saultcareercentre.ca

ENTERTAINMENT



Let us entertain you! Our great venues host a wide variety of musical acts, theater productions, and comedians throughout the year.

For those who love history and music, visit **The Loft**, a stunning and intimate concert space home to the Algoma Conservatory of Music. This space's architectural beauty and acoustics must be experienced to be believed.

The Machine Shop hosts many events throughout the year. Look for upcoming concert announcements. This venue, full of history, is the perfect spot to catch a headline concert or comedy show.

Throughout the summer months, enjoy live music on the waterfront at the **Summer Concert Series** under the Roberta Bondar Pavilion or at the downtown Plaza. The Plaza features colourful and comfortable seating, a children's play area and water feature, licensed patio and delicious culinary choices. A perfect spot for families to enjoy some live entertainment and keep little ones busy.

ADVENTURE STARTS HERE



WATERFRONT ADVENTURE CENTRE (WAC)

Our Waterfront Adventure Centre, situated along the picturesque waters of the St. Mary's River in the heart of the Great Lakes, is home to a student and community inclusive space that takes advantage of outdoor recreational facilities. The Centre features activities from watercraft rentals, such as canoes, kayaks and stand-up paddleboards, to court rentals for tennis, beach volleyball and pickle ball!! There is a 2,500 square foot main building and a 2,460 square foot boathouse. During your visit you can enjoy a snack or refreshing beverage on our licensed patio with the best waterfront view in the Sault! Visit us at saultcollege.ca/waterfront

18 MCPHAIL AVENUE • SAULT STE. MARIE, ON • 705.759.2554 EXT. 2920





LIFE'S BETTER

@

SEARCHMONT RESORT

BASE **898 FT** x SUMMIT **1601 FT** x VERTICAL **703 FT**



**184 Great Northern Rd.
Sault Ste. Marie, ON**
705-254-6441
1-866-551-5904

- Breakfast
- **FREE WIFI**
- Pet Friendly Rooms
- Corporate Long Term Stay Rates
- Guest Laundry
- Newly Updated Rooms & Lobby




frontdesk@saultsuper8.ca
www.super8.com
All Super 8 hotels are independently owned and operated

**WYNDHAM
REWARDS**



**724 Great Northern Rd.
Sault Ste. Marie, ON**
705-450-2423
1-855-232-1325


- Breakfast
- Guest Laundry
- Fitness Centre
- Full HD Channels
- **FREE WIFI**
- Corporate & Medical Rates




frontdesk@microtelinnssm.ca
www.microtelinn.com
Independently owned and operated

**WYNDHAM
REWARDS**

A family of Hotels providing Great Value at a great price.

 **tripadvisor**® Certificate of excellence recipient



ACTIVITY DIRECTORY

ART GALLERIES & EXHIBITIONS

ART GALLERY OF ALGOMA

705-949-9067 | artgalleryofalgoma.com

RECLAIMING SHINGWAUK HALL

705-949-2301 x4623 | reclaimingshingwaukhall.ca

THE ART HUB AT SPRING

705-542-2301

WALKING TOUR OF SAULT STE. MARIE MURALS

705-759-5442 | saulttourism.com

BEACHES

BATCHAWANA BAY PROVINCIAL PARK

705-882-2209

ontarioparks.com/park/batchawanabay

HARMONY BEACH

20 minutes North of Sault Ste. Marie on HWY 17N

POINTE DES CHENES PARK

705-759-2500

PANCAKE BAY PROVINCIAL PARK

705-882-2209

ontarioparks.ca/park/pancakebay

BIKE & GEAR SHOPS

ALGOMA BICYCLE

705-759-3443 | algomabikes.com

DUKE OF WINDSOR

705-942-1610

facebook.com/dukeofwindsorsports

VELORUTION

705-253-9388 | velorution.ca

BREWERIES & WINERIES

BROERS JENSEN

705-450-7665 | broersjansen.com

NORTHERN SUPERIOR BREWING CO

705-450-7568 | northernsuperior.org

OUTSPOKEN BREWING

705-942-4408 | outspokenbrewing.com

SOO FALLS

705-759-9090 | canaldistrict.ca/soo-falls

THOMSON FARMS CIDER & WINERY

705-779-3394 | thomsonfarms.ca

BIRD WATCHING

SAULT NATURALISTS

705-254-8796 | saultnaturalists.org

ST. JOSEPH ISLAND MIGRATORY BIRD SANCTUARY

800-668-6767

SAULT STE. MARIE REGION CONSERVATION AUTHORITY

705-946-8530 | ssmrca.ca

CAMPING

BLUEBERRY HILL CAMPGROUND

705-649-5631 | blueberryhillcampground.ca

GLENVIEW COTTAGES & CAMPGROUND

705-759-3436 | glenviewcottages.com

KOA CAMPGROUND

705-759-2344 | koa.com

LAKE SUPERIOR PROVINCIAL PARK

705-856-2284 | ontarioparks.ca/park/lakesuperior

OJIBWAY TENT & TRAILER PARK

705-248-1520 | ojibwaypark.ca

PANCAKE BAY PROVINCIAL PARK

705-882-2209 | ontarioparks.ca/park/pancakebay

SUNSET SHORES RESORT

705-882-2231 | sunsetshores.ca

CASINO

GATEWAY CASINOS SAULT STE. MARIE

705-759-0100 | saultstemarie.gatewaycasinos.com

CYCLING

BELLEVUE VALLEY

705-649-2880

trailforks.com/region/bellevue-valley-dh

ESPOSITO PUMP TRACK

705-759-2500 | saultstemarie.ca

FORT CREEK TRAILS

705-946-8530 | ssmrca.ca

HIAWATHA HIGHLANDS AND KINSMEN PARK

705-256-7258 | hiawathahighlands.com

JOHN ROWSWELL HUB TRAIL

705-949-2301 x4812 | hubtrail.com

STOKELY CREEK

705-649-3421 | stokelycreek.com

EQUIPMENT RENTALS

FOREST THE CANOE

705-730-3457 | forestthecanoe.ca

Canoe, Kayak, Paddle Board

HIAWATHA HIGHLANDS

705-256-7258 | hiawathahighlands.com

Cross Country Ski, Snowshoe, Fatbike

SAULT STE. MARIE PUBLIC LIBRARY

705-759-5230 | smpl.ca

Snowshoe

SAULT STE. MARIE CANAL NATIONAL HISTORIC SITE

705-941-6262 | parkscanada.ca/sault

Bicycles

SUPERIOR EAST BOARD SHOP

705-777-1589 | sebs-algoma.company.site

Paddle Board

SUPERIOR RENTALS

705-206-6469 | superior-rentals.ca

Ice fishing, Canoe, Kayak, Paddle Board

THE ROBERTA BONDAR PARK AND TENT PAVILION

705-759-5310 | saultstemarie.ca

Bicycles

THRIVE TOURS

705-862-1558 | thrivetours.ca

Canoe, Kayak

VELOTUTION

705-253-9388 | velorution.ca

Fatbikes

WATERFRONT ADVENTURE CENTRE

705-759-2554 x 2920 | saultcollege.ca

Bicycles, Canoe, Kayak, Paddle Board

FARMS & MARKETS

ALGOMA FARMER'S MARKET

705-246-2066 | algomafarmersmarket.ca

GILBERTSON'S MAPLE PRODUCTS

705-246-2066 | gilbertsonsmapple.com

HOGAN'S HOMESTEAD

705-246-7673 | hoganshomestead.ca

MEADOWVIEW ALPACA FARM

705-785-3389 | meadowviewalpacafarm.com

MOCKINGBIRD HILL FARM

705-253-4712 | mockingbirdhillfarm.ca

NEAL'S COUNTRY FARM & MARKET

705-206-1450

facebook.com/nealscountryfarmandmarket

SOO MRKT

705-575-6758 | soomarket.ca

STOKELY CREEK ALPACA RANCH

249-525-7999

THOMSON FARMS CIDER & WINERY

705-779-3394 | thomsonfarms.ca

FAT BIKING

CRIMSON RIDGE

705-254-4653 | crimsonridge.com

FORT CREEK TRAILS

705-946-8530 | ssmrca.ca

HIAWATHA HIGHLANDS

705-256-7258 | hiawathahighlands.com

JOHN ROWSWELL HUB TRAIL

705-949-2301 x 4812 | hubtrail.com

SAULT STE. MARIE CANAL NATIONAL HISTORIC SITE

705-941-6262 | parkscanada.ca/sault

SAULT STE. MARIE GOLF CLUB

705-759-5133 | saultgolfclub.ca

WHITEFISH ISLAND

705-759-0914 | batchewana.ca

FISHING GUIDES

ANGLING ALGOMA

705-943-5286 | anglingalgoma.com

REDWOOD SPORT FISHING CHARTER

705-941-8272 | redwoodcharters.net

SOO STEELHEAD GUIDE SERVICE

705-206-9963 | soosteelheaderguideservice.com

SUPERIOR NORTH CHARTERS

705-255-0389 | superiornorthcharters.com

TYLER DUNN GUIDING

705-206-0984 | tylerdunnguiding.ca

GOLF

CRIMSON RIDGE

705-254-4653 | crimsonridge.com

ROOT RIVER GOLF CLUB

705-759-8776 | rootriverco.com

SAULT STE. MARIE GOLF CLUB

705-759-5133 | saultgolfclub.ca

SILVER CREEK GOLF COURSE

705-942-2080 | golfsilvercreek.com

UP & DOWN LOUNGE

705-450-4835 | upanddownlounge.com

GUIDED TOURS

ALGOMA SCENIC FLIGHTS c/o Sault Academy of Flight

705-779-3999 | saultacademyofflight.ca

BLAQ BEAR ECO ADVENTURE & CULINARY TOURS

705-649-2235 | blaqbear.ca

FOREST THE CANOE

705-730-3457 | forestthecanoe.ca

GREAT LAKES MASKWA AVIATION

705-542-4302 | glma.ca

MÉTIS TOURS

metistours.com

RED PINE TOURS

705-297-1504 | redpinetourscanada.com

SHINGWAUK RESIDENTIAL SCHOOL CENTRE

705-949-2301 x4623

algomau.ca/research/shingwauk-residential-schools-centre**THRIVE TOURS**705-862-1558 | thrivetours.ca**WALK AMONG THE TREES**705-975-3086 | walkamongthetrees.com**HOCKEY****SAULT COUGARS**705-759-2554 x2709 | saultcougars.ca**SOO GREYHOUNDS**705-253-5976 | soogreyhounds.com**SOO THUNDERBIRDS**705-256-3606 | soothunderbirds.com**MARINAS****BELLEVUE MARINA**705-759-2838 | saultstemarie.ca**GROS CAP MARINA**705-779-2922 | princetownship.ca/marina**HILTON BEACH MARINA**705-246-2291 | hiltonbeach.com**RICHARDS LANDING MUNICIPAL MARINA**705-246-0254 | stjosephmunicipality.com**ROBERTA BONDAR MARINA**705-759-5430 | saultstemarie.ca**MUSEUMS & EXHIBITS****ART GALLERY OF ALGOMA**705-949-9067 | artgalleryofalgoma.com**CANADIAN BUSHPLANE HERITAGE CENTRE**705-945-6242 | bushplane.com**ENTOMICA INSECTARIUM**705-297-5777 | entomica.com**ERMATINGER CLERGUE NATIONAL HISTORIC SITE**705-759-5443 | ecnhs.com**ROYAL CANADIAN LEGION BRANCH 25 MUSEUM**705-945-8721 | legionbranch25ssm.com**SAULT STE. MARIE MUSEUM**705-759-7278 | saultmuseum.ca**NATIONAL HISTORIC SITES****ERMATINGER CLERGUE NATIONAL HISTORIC SITE**705-759-5443 | ecnhs.com**FORT ST. JOSEPH NATIONAL HISTORIC SITE**

705-246-2664

parks.canada.ca/lhn-nhs/on/stjoseph**SAULT STE. MARIE CANAL NATIONAL HISTORIC SITE**

705-941-6262

parks.canada.ca/lhn-nhs/on/ssmarie**THE FORMER SHINGWAUK INDIAN RESIDENTIAL SCHOOL**705-949-2301 x4623 | algomau.ca/research/shingwauk-residential-schools-centre**WHITEFISH ISLAND**705-759-0914 | batchewana.ca**PARKS AND PLAYGROUNDS****BELLEVUE PARK & SPLASH PAD**705-759-5310 | saultstemarie.ca**CLERGUE PARK**705-759-5310 | saultstemarie.ca**DOWNTOWN PLAZA**705-759-5310 | saultstemarie.ca**KINSMEN PARK**705-759-5310 | saultstemarie.ca**MANZO PARK SPLASH PAD**705-759-5310 | saultstemarie.ca**POINT DES CHENES PARK**705-759-5310 | saultstemarie.ca**STRATHCLAIR SPORT COMPLEX**705-759-5310 | saultstemarie.ca**WISHART PARK**705-759-5310 | saultstemarie.ca

RACE TRACKS

LAIRD INTERNATIONAL RACEWAY

705-759-3781 | lairdraceway.com

RUNWAY PARK

705-206-7322 | runwaypark.pro

SELF GUIDED TOUR RESOURCES

DESTINATION ONTARIO

800-668-2746 | destinationontario.com

GREAT LAKES WATERFRONT TRAIL

416-943-8080 | waterfronttrail.org

GROUP OF SEVEN TOUR ROUTE

705-254-4293 | momentsofalgoma.ca

LAKE SUPERIOR COASTAL DRIVE

705-759-5310 | saulttourism.com

LAKE SUPERIOR SHORELINE TOUR

807-889-1435 | lakesuperiorcircuitour.info

ON THIS SPOT APP

604-367-4973

onthisspot.ca/places/saultstemarie

ONTARIO BY BIKE

866-701-2774 | ontariobybike.ca

SAULT CYCLING CLUB

saultcyclingclub.ca

SAULT TRAILBLAZERS

ssmtrailblazers.ca

VOYAGEUR TRAIL ASSOCIATION

877-393-4003 | voyageurtrail.ca

WALKING TOUR OF SAULT STE. MARIE MURALS

800-461-6020 | saulttourism.com

SHOPPING & MALLS

DOWNTOWN SAULT STE. MARIE

705-942-2919 | saultdowntown.com/retail

FRONTIER VILLAGE

705-759-4518 | trading-post.ca

THE CAMBRIAN MALL

705-987-0041 | cambrianmall.ca

THE STATION MALL

705-707-1212 | thestationmall.com

SKATING OUTDOORS

ART JENNINGS SPEED SKATING OVAL

705-759-5310 | saultstemarie.ca

CLERGUE PARK

Clergue Park Skating Trail

705-759-5310 | saultstemarie.ca

DOWNTOWN PLAZA SKATING RINK

705-759-5310 | saultstemarie.ca

THE RINK

705-759-9090 | canaldistrict.ca/the-rink

SKIING

BELLEVUE VALLEY LODGE

705-649-2880 | bellevuevalleylodge.ca

HIAWATHA HIGHLANDS

705-256-7258 | hiawathahighlands.com

SEARCHMONT RESORT

705-781-2340 | searchmont.com

STOKELY CREEK LODGE

705-649-3421 | stokelycreek.com

SNOWMOBILING

ALGOMA SNO-PLAN AFFILIATION

705-356-5757 | algomatrails.com

ONTARIO FEDERATION OF SNOWMOBILE CLUBS

705-739-7669 | ofsc.on.ca



SAULT TRAILBLAZERS

ssmtrailblazers.ca

SLED ALGOMA

800-263-2546 | algomacountry.com/sledalgoma

SNOWSHOEING**CRIMSON RIDGE**

705-254-4653 | crimsonridge.com

FORT CREEK CONSERVATION AREA

705-946-8530 | ssmrca.ca

HIAWATHA HIGHLANDS

705-256-7258 | hiawathahighlands.com

SAULT STE. MARIE GOLF CLUB

705-759-5133 | saultgolfclub.ca

ST. KATERI OUTDOOR LEARNING CENTRE

705-945-5668

hscdsb.on.ca/stkaterioutdoorlearningcentre

STOKELY CREEK

705-649-3421 | stokelycreek.com

SOUVENIR SHOPS**ART GALLERY OF ALGOMA**

705-949-9067 | artgalleryofalgoma.com

CANADIAN BUSHPLANE HERITAGE CENTRE

705-945-6242 | bushplane.com

ONTARIO TRAVEL INFORMATION CENTRE

800-668-2746

destinationontario.com/en-ca/contact-us

SAULT STE. MARIE CANAL NATIONAL HISTORIC SITE

705-941-6262 | parkscanada.ca/sault

SAULT STE. MARIE MUSEUM

705-759-7278 | saultmuseum.ca

THE POST GIFT SHOP - ERMATINGER CLERGUE NATIONAL HISTORIC SITE

705-759-5443 | ecnhs.com

SPAS**AZURE SALON SPA MEDISPA**

705-450-6533 | azuressm.ca

GREENHOUSE SPA

705-256-6461 | greenhousespa.ca

LASER ADVANTAGE MEDSPA

705-256-5420 | ssmlaseradvantage.com

MANE STREET SALON AND SPA

705-253-4988 | manestreetco.com

THE AESTHETIC STUDIO

705-987-6664 | theaestheticstudio.ca

THE POWDER ROOM

705-946-1616

vagaroo.com/thepowderroombeautybar

THE TEN SPOT

705-575-7768 | thetenspot.com/saultstemarie

SPORTS OUTFITTERS**ATMOSPHERE**

705-945-0900 | atmosphere.ca

BUD ROBINSON MOTORSPORTS

705-256-5326 | robinsonmotorsports.ca

CANADIAN TIRE

705-949-0770 | canadiantire.ca

DUKE OF WINDSOR

705-942-1610

facebook.com/dukeofwindsorsports

GREAT LAKE OUTFITTERS

705-253-2361 | greatlakesoutfitters.ca

HIWAY VARIETY OUTFITTERS

705-946-3737 | facebook.com/HiwayVariety

NORTHERN SPORTS EXCELLENCE

705-998-4744 | northernsportsexcellence.com

NORTH SHORE SPORTS AND AUTO

705-942-9006 | northshoresports.ca

OUTFITTERS SSM

705-759-0008 | outfitterssm.ca

SPORTS OUTFITTERS CONT'D

REYCO MARINE & SMALL ENGINE LTD.

705-253-7828 | reycomarine.com

RIVER CITY MOTOR SPORTS & MARINE

705-253-2750 | rivercitysault.com

SOO SOURCE FOR SPORTS

705-942-7060 | sourceforsports.ca

SUPERIOR EAST BOARD SHOP

705-777-1589 | sebs-algoma.company.site

THE TRADING POST

705-759-4518 | trading-post.ca

VELORUTION

705-253-9388 | velorution.ca

SPORTS & RECREATION

ALGOMA ROD & GUN CLUB

705-253-1849

facebook.com/p/Algoma-Rod-and-Gun-Club-100063634834170

ARCHERY

705-942-2154 | arrowsinmotion.com

BELLEVUE PARK & SPLASH PAD

705-759-5310 | saultstemarie.ca

ESPOSITO PUMP TRACK

705-759-5310 | saultstemarie.ca

GFL MEMORIAL GARDENS

705-759-5251 | gflgardens.ca

GOATOPIA

705-206-3674 | goatopia.online

HIDDEN HILLS STABLES & EQUESTRIAN CENTRE

705-943-6135 | facebook.com/hiddenhills2014

JOHN RHODES COMMUNITY CENTRE

705-759-5419 | saultstemarie.ca

KIWANIS CLUB OF LAKESHORE

Disc Golf

Coursediscgolfscene.com

NORTHCREST BOWLING LANES

705-256-7441 | northcrestbowling.com

NORTHERN COMMUNITY CENTRE

705-759-5489 | saultstemarie.ca

OUTFITTERS CLIMBING WALL

705-759-0008 | outfitterssm.ca

PICKLEBALL

soopickleball.com

POINTE DES CHENES DISC GOLF COURSE

705-759-2500 | discgolfscene.com

QUEEN ELIZABETH SKATE PARK

705-943-6852 | saultstemarie.ca

ROLLERS BOCCÉ

705-942-5556 | themarconi.ca

SOO AXE THROWING

705-575-0923 | sooaxethrowing.ca

SOO BLASTERS

705-450-0095 | sooblaster.com

UP AND DOWN LOUNGE

705-450-4835 | upanddownlounge.com

WATERFRONT ADVENTURE CENTRE

705-759-2554 x 2920 | saultcollege.ca

YNCU CURLING CENTRE

705-254-6174 | soocurlers.com

THEATRES

ALGOMA CONSERVATORY OF MUSIC

705-253-4373 x 6400 | algomaconservatory.com

ALGOMA REPERTORY THEATRE

705-943-9519 | artinssm.com

GALAXY CINEMA

705-949-7949 | cineplex.com

SAULT COMMUNITY THEATRE CENTRE

705-945-7299 | saultctc.ca

THE GRAND THEATRE

705-575-5687 | thegrandtheatre.ca

WALKING & HIKING TRAILS

ALGOMA HIGHLANDS CONSERVANCY - ROBERTSON CLIFFS

705-649-5751 | algomahighlandsconservancy.com

BATCHAWANA BAY PROVINCIAL PARK

705-882-2209 | ontarioparks.com/park/batchawanabay

BELLEVUE PARK

705-759-5313 | saultsternie.ca/bellevuepark

FORT CREEK CONSERVATION AREA

705-946-8530 | ssmrca.ca

GARDEN RIVER OJIBWAY PARK NATURE TRAIL

705-248-1520 | ojibwaypark.ca/trail

HIAWATHA HIGHLANDS AND KINSMEN PARK

705-256-7258 | hiawathahighlands.com

JOHN ROWSWELL HUB TRAIL

705-949-2301 x 4812 | hubtrail.com

PANCAKE BAY PROVINCIAL PARK

705-882-2209 | ontarioparks.ca/park/pancakebay

POINTE DES CHENES PARK

705-759-2500 | saultsternie.ca

SAULT STE. MARIE CANAL NATIONAL HISTORIC SITE

705-941-6262 | parkscanada.ca/sault

VOYAGEUR TRAIL

705-254-2356 | voyageurtrail.ca

WHITEFISH ISLAND

705-759-0914 | batchewana.ca



WHERE TO EAT

Looking for a local restaurant? For a complete list of restaurants and dining please visit our website.





Let us help you find the tools
you need to thrive.
Together, we can make wellness
your way of life.

79 Brock St., Downtown
M-F: 9am-6pm / S: 9am-4pm
705-949-1898

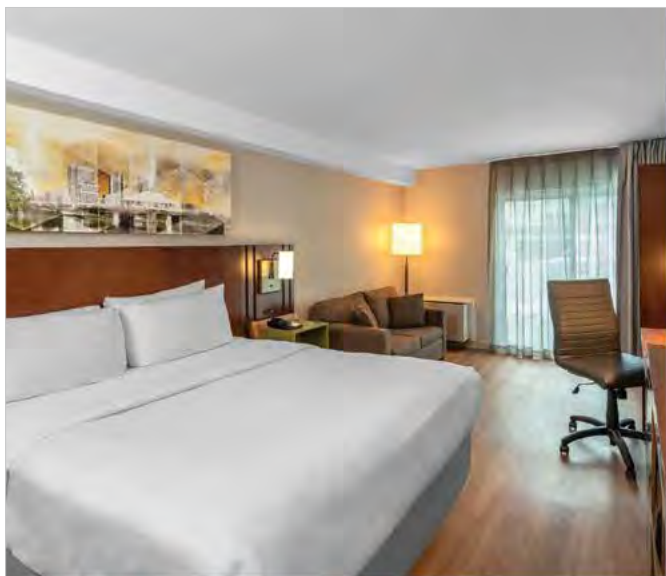
 @thecountryway1974

A Special Gift for You!

As a thank-you for
discovering us, enjoy

\$5 OFF

your purchase of \$25 or more
with this coupon.



**Comfort[™]
INN**

by CHOICE HOTELS

**COMFORT INN
SAULT STE MARIE**

333 Great Northern Road
Sault Ste Marie, ON | P6B 4Z8
T: 705-759-8000
1-866-529-1019

Located in uptown Sault Ste Marie, we're surrounded by great restaurants
& shopping. Your stay includes our wonderful breakfast, WIFI,
fridge/microwave in every room. Pet Friendly!

www.saultstemariecomfortinn.com

Giovanni's

Italian Restaurant

Famous for ribs, fresh pasta, sauces, steak and seafood. Home style bread and garden salad served with all entrées.

Check out our daily lunch and dinner features!



**EXPERIENCE A
TOUCH OF ITALY**
serving the Soo since 1978

516 Great Northern Road Across from the Fairfield Marriott
www.giovanisrestaurant.ca | 705-942-3050

Fratelli's
KITCHEN & PIZZERIA



Located at 522 Great Northern Road
(by Giovanni's and Home Depot)

Authentic Pizzeria	Chicken Wings	Party Combos
Panzarotti	Sandwiches	Fully Licensed
Homemade Soups	Wraps	Eat In/Take Out
Pasta & Meatballs	Outdoor Patio	Online Ordering

WWW.FRATELLISRESTAURANT.CA | 705-256-1313

**BURGER
DON**
FOOD & BEVERAGE CO.

A BURGER YOU CAN'T REFUSE

A prohibition-era burger joint featuring gourmet burgers, build-you-own burgers, tacos, spiked milkshakes and craft beer.



We are open every day from 11am to midnight.

7 Great Northern Rd
705-946-4444
www.burgerdon.ca



WHERE TO STAY IN THE SOO

HOTELS

COMFORT INN *by Choice Hotels*

333 Great Northern Rd. | 705-759-8000

saultstemariecomfortinn.com



DAYS INN & SUITES *by Wyndham*

332 Bay St. | 705-759-1400

daysinnssm.com



DELTA HOTELS

Sault Ste. Marie Waterfront *by Marriott*

208 St. Mary's River Dr. | 705-949-0611

marriott.com/yamds



FAIRFIELD INN & SUITES *by Marriott*

633 Great Northern Rd. | 705-253-7378

marriott.com/yamfi



HOLIDAY INN EXPRESS *an IHG Hotel*

320 Bay St. | 705-759-8200

hiexpress.com/saulton



Complimentary
Hot Breakfast



Pool



Restaurant/
Lounge



Pets
Allowed



Hot Tub or
Sauna



Accessible

MICROTEL INN & SUITES *by Wyndham*

724 Great Northern Rd. | 705-910-0180

microtelinn.com



QUALITY INN & SUITES BAY FRONT *by Choice Hotels*

180 Bay St. | 705-945-9264

qualityinnssm.com



QUATTRO HOTEL AND CONFERENCE CENTRE

An Ascent Collection by Choice Hotels

229 Great Northern Rd. | 705-942-2500

quattrossm.com



SLEEP INN *by Choice Hotels*

727 Bay St. | 705-253-7533

sleepinnssmarie.ca



SUPER 8 *by Wyndham*

184 Great Northern Rd. | 705-910-2585

super8.com



WATER TOWER INN

A Premier Collection by Best Western

360 Great Northern Rd. | 705-949-8111

watertowerinn.com





MOTELS

ADAMS MOTEL

647 Great Northern Rd. | 705-254-4345
adams-motel.ontariocahotel.com

ALGOMA CABINS & MOTEL

1713 Queen St. E. | 705-256-8681
algomacabins.com

ALGONQUIN

864 Queen St. E. | 705-253-2311
algonquin.ontariocahotel.com

AMBASSADOR MOTEL

1275 Great Northern Rd. | 705-759-6199
ambassadorsmotel.com

CATALINA MOTEL

259 Great Northern Rd. | 705-945-9260
catalinamotel.com

HOLIDAY MOTEL

435 Trunk Rd. | 705-759-8608
holiday-motel-p6a-3t1.ontariocahotel.com

MOTEL 6

503 Trunk Rd. | 705-253-2327
motel6.com

NORTHERN MOTEL

1547 Trunk Rd. | 705-759-2316

NORTHLANDER MOTEL

243 Great Northern Rd. | 705-450-0707
northlandermotel.top

PINE GROVE MOTEL

1515 Trunk Rd. | 705-759-1202
pinegrovemotelsaultstemarie.top

SATELITE MOTEL

248 Great Northern Rd. | 705-759-2897
satelitemotel.com

SKYLINE MOTEL

232 Great Northern Rd. | 705-942-1240
skylinemotel.ca

SUPER NIGHTS INN

1587 Trunk Rd. | 705-949-7777
supernightsinn.ca

TRUNK ROAD MOTEL

759 Trunk Rd. | 705-946-1933
trunkroadmotel.com

CAMPGROUNDS AND LODGES

BELLEVUE VALLEY LODGE

RR #1 Goulais River, ON | 705-649-2880
bellevuevalleylodge.ca

GLENVIEW COTTAGES & CAMPGROUND

2611 Great Northern Rd. | 705-759-3436
glenviewcottages.com

KOA HOLIDAY CAMPGROUND

501 Fifth Line E. | 705-759-2344
koassm.com

MOUNTAINVIEW LODGE

4280 Hwy 556, Searchmont, ON
705-781-3329
mountainviewlodge.ca

SEARCHMONT RESORT

103 Searchmont Resort Rd., Searchmont, ON
705-781-2340
searchmont.com

STOKELY CREEK LODGE

194 Pickard Rd., Goulais River, ON
705-649-3421
stokelycreek.com

SHORT TERM RENTALS

Scan this QR Code to access a list of licensed Air BNB, VRBO and short term rentals.



Disclaimer: The information listed above is provided by the accommodations and while we make every reasonable effort to ensure that the information provided is accurate, we make no representations, warranties or guarantees of any kind, express or implied, regarding the completeness, accuracy, reliability or satisfactory quality of each property.

STATION MALL



**Located on the scenic waterfront
in downtown Sault Ste. Marie**

Discover the ultimate shopping destination just two minutes from the International Bridge, featuring a wide range of retail stores, quick dining options, free parking, and exciting new additions for your next shopping adventure!



www.thestationmall.com | ☎ (705) 707 - 1212 | [f](#) [@thestationmall](#)



**ONTARIO'S PREMIER DESTINATION
FOR WINTER RECREATION**



**COME DISCOVER THE 50KM OF GROOMED
TRAILS AND AMENITIES, JUST MINUTES
FROM DOWNTOWN SAULT STE. MARIE.**

**FOR MORE INFO, VISIT OUR WEBSITE
HIAWATHAHIGHLANDS.COM**



TOURIST INFORMATION

Ontario Travel Information Centre

261 Queen St W,
Sault Ste. Marie, ON
P6A 1A3

705- 945-6941

Sault Ste. Marie

saulttourism.com
welcometossm.com

1-800-461-6020

Downtown Association

saultdowntown.com

705-942-2919



 OnThisSpot

Sault Ste Marie
History Walking Tour App



Self-guided walking tours
that delve deep into the Soo's
fascinating history.



Hundreds of then and now
photos so you can compare
past and present.

Download the app at www.OnThisSpot.ca

 DOWNTOWN
ASSOCIATION

 SAULT
STE. MARIE

 Sault Ste. Marie
Museum



CITY OVERVIEW

MAP IS NOT TO SCALE, DISTANCES GREATER THAN SHOWN



CITY MAP LEGEND

- TOURIST INFORMATION
 - CIVIC CENTRE
 - CITY POLICE
 - ONTARIO PROVINCIAL POLICE
 - HOSPITAL
 - AIRPORT
 - UNIVERSITY/COLLEGE
 - CITY TRANSIT
 - BUS STATION
 - PARKING
 - POST OFFICE
 - CHAMBER OF COMMERCE
 - LIBRARY
- SSM COMMUNITY THEATRE
 - SHOPPING
 - GOLF
 - DISC GOLF
 - SWIMMING POOL
 - MARINA
 - BOAT LAUNCH
 - SOCCER FIELD
 - BASEBALL FIELD
 - CRICKET FIELD
 - SKATE PARK
 - PUMP TRACK
 - ICE SKATE
- KAYAK DOCK
 - SNOWMOBILE STAGING AREA
 - PARK
 - CAMPGROUND
 - DUMP STATION
 - ONE-WAY STREET
 - TWO-WAY STREET
 - HIKING TRAIL
 - RAILWAY
 - HUB TRAIL

ATTRACTIONS

- 1 AGAWA CANYON TOUR TRAIN
 - 2 ART GALLERY OF ALGOMA
 - 3 CANADIAN BUSHPLANE HERITAGE CENTRE/ENTOMICA
 - 4 CANAL DISTRICT
 - 5 DOWNTOWN PLAZA/ SOO MRKT
 - 6 ERMATINGER-CLERGUE NATIONAL HISTORIC SITE
 - 7 GATEWAY CASINO SSM
 - 8 FRONTIER VILLAGE
 - 9 HIAWATHA HIGHLANDS
 - 10 HISTORIC LIGHTED CROSS
 - 11 HOGAN'S HOMESTEAD
- 12 MISS MARIE LOCK TOUR BOAT
 - 13 ROBERTA BONDAR PAVILION
 - 14 RUNWAY PARK
 - 15 SSM CANAL NATIONAL HISTORIC SITE
 - 16 SAULT STE. MARIE MUSEUM
 - 17 SEARCHMONT RESORT
 - 18 STATION MALL
 - 19 STOKELY CREEK LODGE
 - 20 THOMSON FARMS
 - 21 WATERFRONT ADVENTURE CENTRE

SPORTS VENUES

- 1 GFL MEMORIAL GARDENS
- 2 JOHN RHODES COMMUNITY CENTRE
- 3 SOO PEE WEE ARENA
- 4 YNCU CURLING CENTRE
- 5 RANKIN ARENA
- 6 NORTHERN COMMUNITY CENTRE



That epic.



**Experience the Incredible Landscape.
Plan Your Adventure to Algoma Country.**

algomacountry.com

ONTARIO
CANADA

Algoma
That real.

Welcome
Bienvenue
Biindigen

WWW.SAULTTOURISM.COM